

## Product datasheet for **TA349431S**

### **PBP (PEBP1) Rabbit Polyclonal Antibody**

#### **Product data:**

Product Type:	Primary Antibodies
Applications:	IHC, WB
Recommended Dilution:	WB: 500-2000 WB positive control: A549, K562, hela and hepG2 cells IHC: 50-200 Positive control: Human lung cancer Predicted cell location: Cytoplasm
Reactivity:	Human, Mouse, Rat
Host:	Rabbit
Isotype:	IgG
Clonality:	Polyclonal
Immunogen:	Fusion protein of human PEBP1
Formulation:	pH7.4 PBS, 0.05% NaN <sub>3</sub> , 40% Glycerol
Purification:	Antigen affinity purification
Conjugation:	Unconjugated
Storage:	Store at -20°C as received.
Stability:	Stable for 12 months from date of receipt.
Predicted Protein Size:	21 kDa
Gene Name:	phosphatidylethanolamine binding protein 1
Database Link:	<a href="#">NP_002558</a> <a href="#">Entrez Gene 23980 Mouse</a> <a href="#">Entrez Gene 29542 Rat</a> <a href="#">Entrez Gene 5037 Human</a> <a href="#">P30086</a>



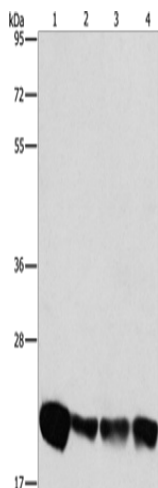
[View online »](#)

**Background:**

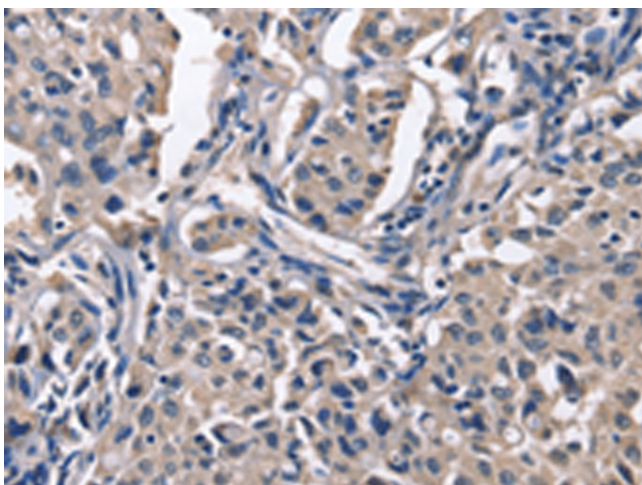
Phosphatidylethanolamine-binding protein 1 is a protein that in humans is encoded by the PEBP1 gene. Binds ATP, opioids and phosphatidylethanolamine. Has lower affinity for phosphatidylinositol and phosphatidylcholine. Serine protease inhibitor which inhibits thrombin, neuropsin and chymotrypsin but not trypsin, tissue type plasminogen activator and elastase By similarity. Inhibits the kinase activity of RAF1 by inhibiting its activation and by dissociating the RAF1/MEK complex and acting as a competitive inhibitor of MEK phosphorylation.

**Synonyms:**

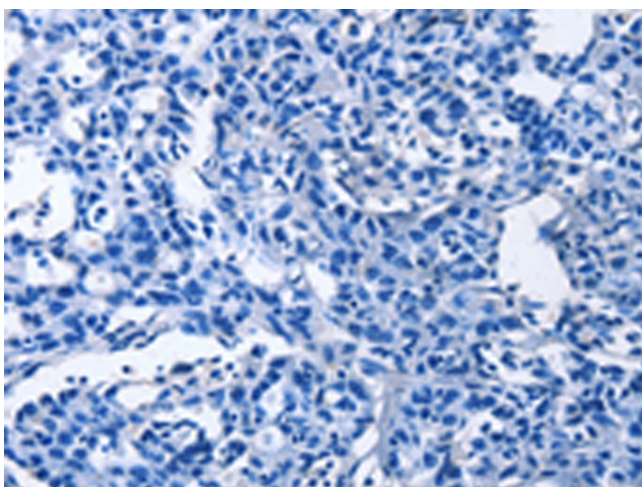
HCNP; HCNPPp; HEL-210; HEL-S-34; HEL-S-96; PBP; PEBP; PEBP-1; RKIP

**Product images:**

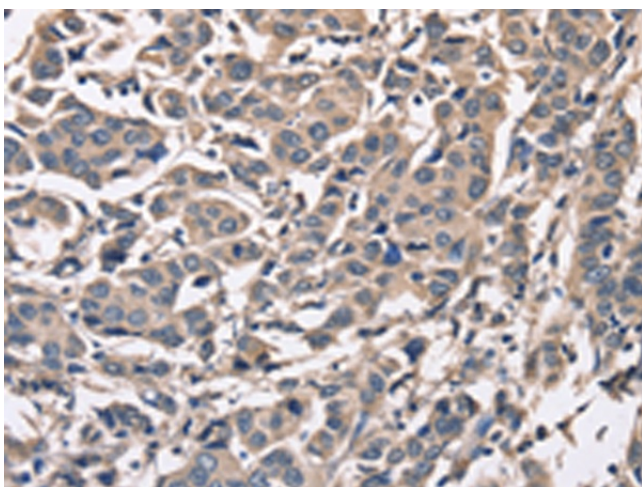
Gel: 8%SDS-PAGE  
Lysate: 40 µg  
Lane 1-4: A549 cells  
K562 cells  
hela cells  
hepG2 cells  
Primary antibody: [TA349431] (PEBP1 Antibody)  
at dilution 1/475  
Secondary antibody: Goat anti rabbit IgG at  
1/8000 dilution  
Exposure time: 40 seconds



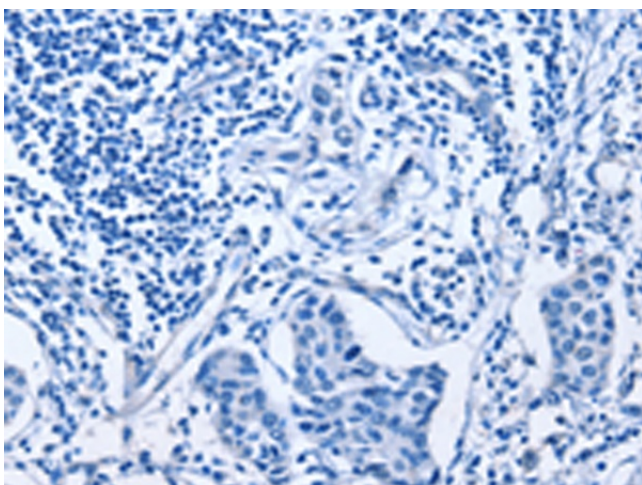
Immunohistochemistry of paraffin-embedded  
Human lung cancer tissue using [TA349431]  
(PEBP1 Antibody) at dilution 1/50 (Original  
magnification: ×200)



Immunohistochemistry of paraffin-embedded Human lung cancer tissue using [TA349431] (PEBP1 Antibody) at dilution 1/50, treated with fusion protein. (Original magnification:  $\times 200$ )



Immunohistochemistry of paraffin-embedded Human breast cancer tissue using [TA349431] (PEBP1 Antibody) at dilution 1/50 (Original magnification:  $\times 200$ )



Immunohistochemistry of paraffin-embedded Human breast cancer tissue using [TA349431] (PEBP1 Antibody) at dilution 1/50, treated with fusion protein. (Original magnification:  $\times 200$ )