

## Product datasheet for **TA349430S**

### Prohibitin (PHB) Rabbit Polyclonal Antibody

#### Product data:

Product Type:	Primary Antibodies
Applications:	IHC, WB
Recommended Dilution:	WB: 500-2000 WB positive control: 293T and A549 cells, human hepatocellular carcinoma tissue and PC3 cells, hela cells and mouse heart tissue IHC: 50-200 Positive control: Human liver cancer Predicted cell location: Cytoplasm
Reactivity:	Human, Mouse, Rat
Host:	Rabbit
Isotype:	IgG
Clonality:	Polyclonal
Immunogen:	Fusion protein of human PHB
Formulation:	pH7.4 PBS, 0.05% NaN <sub>3</sub> , 40% Glycerol
Purification:	Antigen affinity purification
Conjugation:	Unconjugated
Storage:	Store at -20°C as received.
Stability:	Stable for 12 months from date of receipt.
Predicted Protein Size:	30 kDa
Gene Name:	prohibitin
Database Link:	<a href="#">NP_002625</a> <a href="#">Entrez Gene 18673 Mouse</a> <a href="#">Entrez Gene 25344 Rat</a> <a href="#">Entrez Gene 5245 Human</a> <a href="#">P35232</a>
Background:	This gene is evolutionarily conserved, and its product is proposed to play a role in human cellular senescence and tumor suppression. Antiproliferative activity is reported to be localized to the 3' UTR, which is proposed to function as a trans-acting regulatory RNA. Several pseudogenes of this gene have been identified. Alternative splicing results in multiple transcript variants

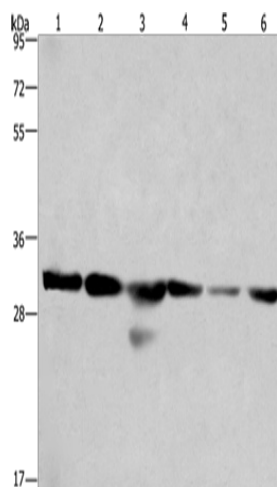


[View online »](#)

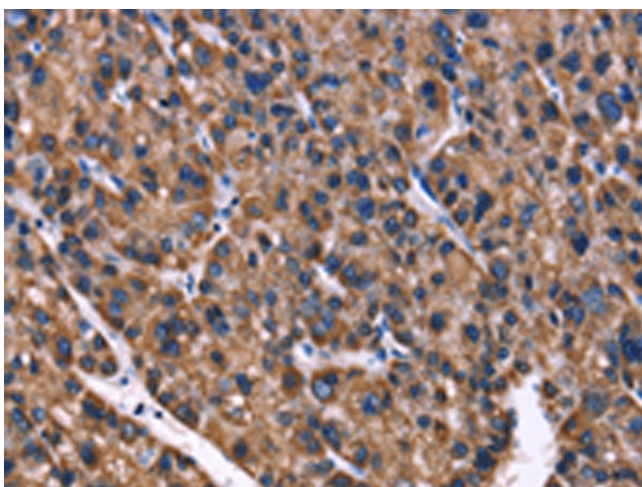
**Synonyms:** HEL-215; HEL-S-54e; PHB1

**Protein Families:** Druggable Genome, Stem cell - Pluripotency, Transcription Factors

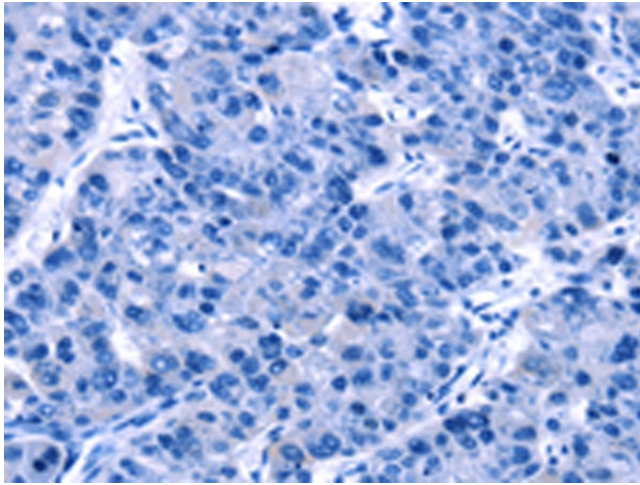
**Product images:**



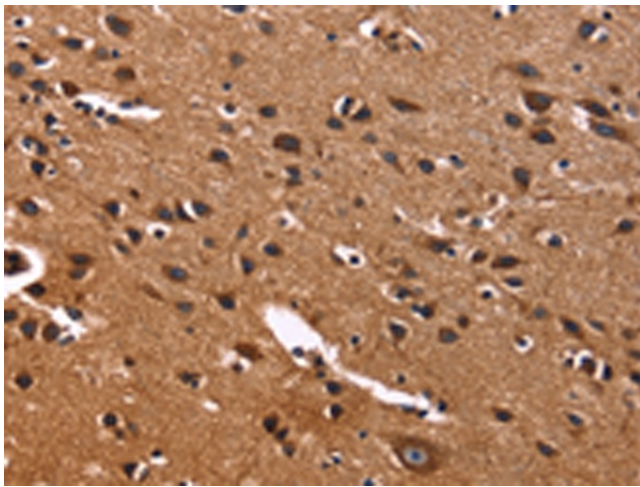
Gel: 10%SDS-PAGE  
 Lysate: 40 µg  
 Lane 1-6: 293T cells  
 A549 cells  
 human hepatocellular carcinoma tissue  
 PC3 cells  
 hela cells  
 mouse heart tissue  
 Primary antibody: [TA349430] (PHB Antibody) at dilution 1/500  
 Secondary antibody: Goat anti rabbit IgG at 1/8000 dilution  
 Exposure time: 15 seconds



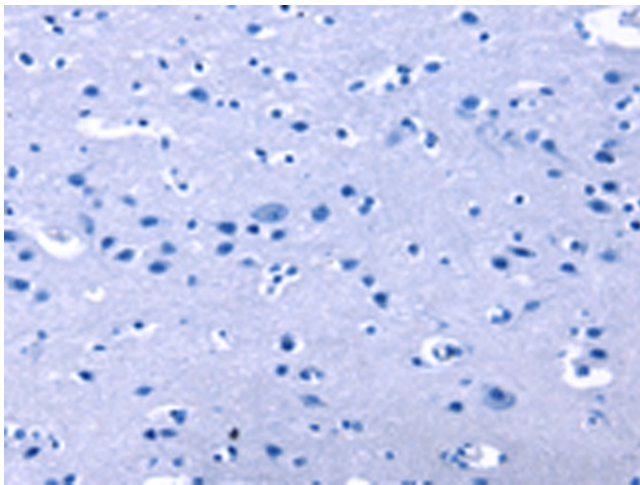
Immunohistochemistry of paraffin-embedded Human liver cancer tissue using [TA349430] (PHB Antibody) at dilution 1/40 (Original magnification: ×200)



Immunohistochemistry of paraffin-embedded Human liver cancer tissue using [TA349430] (PHB Antibody) at dilution 1/40, treated with fusion protein. (Original magnification: x200)



Immunohistochemistry of paraffin-embedded Human brain tissue using [TA349430] (PHB Antibody) at dilution 1/40 (Original magnification: x200)



Immunohistochemistry of paraffin-embedded Human brain tissue using [TA349430] (PHB Antibody) at dilution 1/40, treated with fusion protein. (Original magnification: x200)