

Product datasheet for **TA349430**

Prohibitin (PHB) Rabbit Polyclonal Antibody

Product data:

Product Type:	Primary Antibodies
Applications:	IHC, WB
Recommended Dilution:	WB: 500-2000 WB positive control: 293T and A549 cells, human hepatocellular carcinoma tissue and PC3 cells, hela cells and mouse heart tissue IHC: 50-200 Positive control: Human liver cancer Predicted cell location: Cytoplasm
Reactivity:	Human, Mouse, Rat
Host:	Rabbit
Isotype:	IgG
Clonality:	Polyclonal
Immunogen:	Fusion protein of human PHB
Formulation:	pH7.4 PBS, 0.05% NaN ₃ , 40% Glycerol
Concentration:	lot specific
Purification:	Antigen affinity purification
Conjugation:	Unconjugated
Storage:	Store at -20°C as received.
Stability:	Stable for 12 months from date of receipt.
Predicted Protein Size:	30 kDa
Gene Name:	prohibitin
Database Link:	NP_002625 Entrez Gene 18673 Mouse Entrez Gene 25344 Rat Entrez Gene 5245 Human P35232



[View online »](#)

Background:

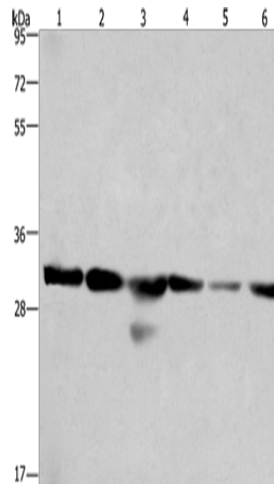
This gene is evolutionarily conserved, and its product is proposed to play a role in human cellular senescence and tumor suppression. Antiproliferative activity is reported to be localized to the 3' UTR, which is proposed to function as a trans-acting regulatory RNA. Several pseudogenes of this gene have been identified. Alternative splicing results in multiple transcript variants

Synonyms:

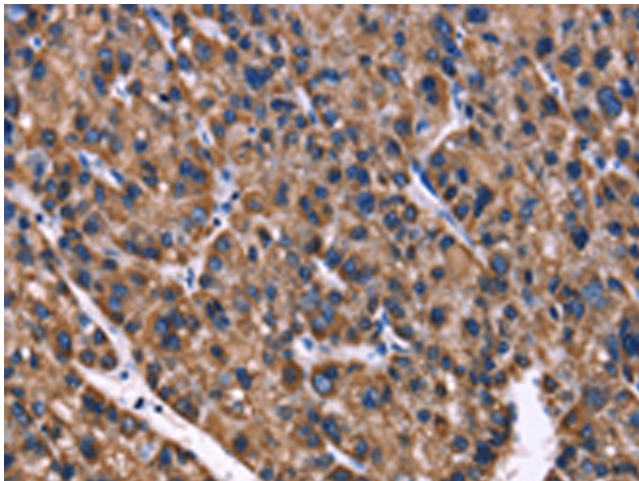
HEL-215; HEL-S-54e; PHB1

Protein Families:

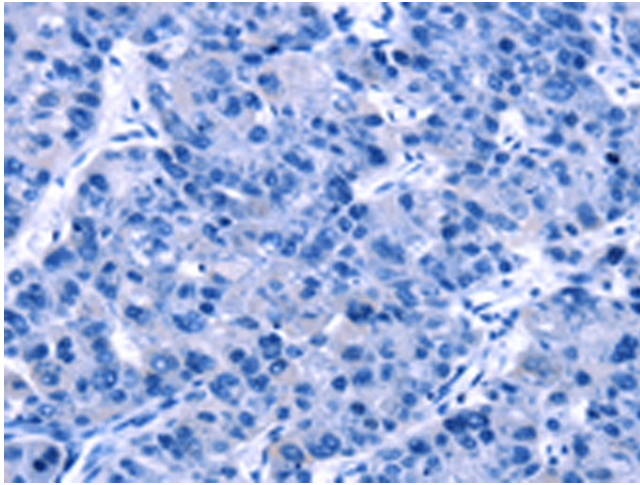
Druggable Genome, Stem cell - Pluripotency, Transcription Factors

Product images:


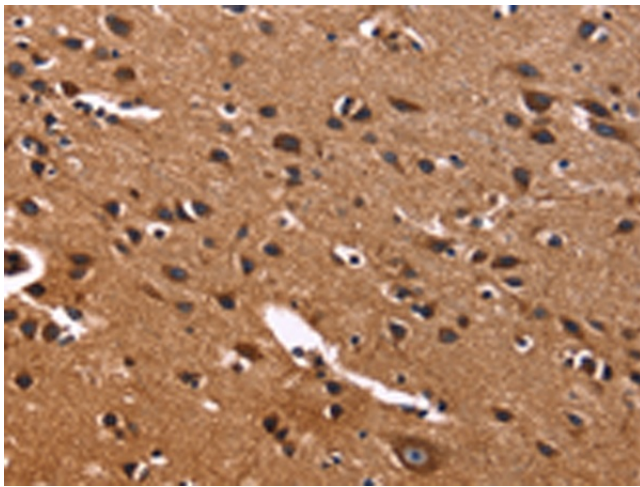
Gel: 10%SDS-PAGE
 Lysate: 40 µg
 Lane 1-6: 293T cells
 A549 cells
 human hepatocellular carcinoma tissue
 PC3 cells
 hela cells
 mouse heart tissue
 Primary antibody: TA349430 (PHB Antibody) at dilution 1/500
 Secondary antibody: Goat anti rabbit IgG at 1/8000 dilution
 Exposure time: 15 seconds



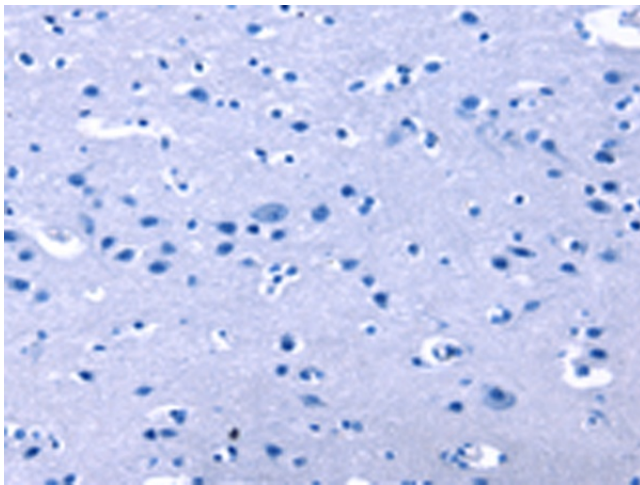
Immunohistochemistry of paraffin-embedded Human liver cancer tissue using TA349430 (PHB Antibody) at dilution 1/40 (Original magnification: ×200)



Immunohistochemistry of paraffin-embedded Human liver cancer tissue using TA349430 (PHB Antibody) at dilution 1/40, treated with fusion protein. (Original magnification: ×200)



Immunohistochemistry of paraffin-embedded Human brain tissue using TA349430 (PHB Antibody) at dilution 1/40 (Original magnification: ×200)



Immunohistochemistry of paraffin-embedded Human brain tissue using TA349430 (PHB Antibody) at dilution 1/40, treated with fusion protein. (Original magnification: ×200)