

## Product datasheet for **TA349429S**

### PDE4D Rabbit Polyclonal Antibody

#### Product data:

Product Type:	Primary Antibodies
Applications:	IHC, WB
Recommended Dilution:	WB: 500-2000 WB positive control: Human bladder carcinoma tissue and A172 cells, human fetal brain tissue and hela cells IHC: 25-100 Positive control: Human gasrtic cancer Predicted cell location: Cytoplasm
Reactivity:	Human
Host:	Rabbit
Isotype:	IgG
Clonality:	Polyclonal
Immunogen:	Fusion protein of human PDE4D
Formulation:	pH7.4 PBS, 0.05% NaN <sub>3</sub> , 40% Glycerol
Purification:	Antigen affinity purification
Conjugation:	Unconjugated
Storage:	Store at -20°C as received.
Stability:	Stable for 12 months from date of receipt.
Predicted Protein Size:	91 kDa
Gene Name:	phosphodiesterase 4D
Database Link:	<a href="#">NP_006194</a> <a href="#">Entrez Gene 5144 Human</a> <a href="#">Q08499</a>
Background:	This gene encodes one of four mammalian counterparts to the fruit fly 'dunce' gene. The encoded protein has 3',5'-cyclic-AMP phosphodiesterase activity and degrades cAMP, which acts as a signal transduction molecule in multiple cell types. This gene uses different promoters to generate multiple alternatively spliced transcript variants that encode functional proteins.



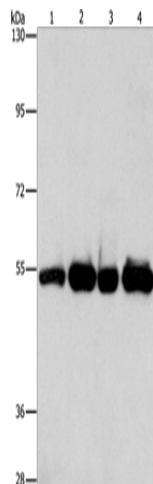
[View online »](#)

**Synonyms:** ACRDYS2; DPDE3; HSPDE4D; PDE4DN2; PDE43; STRK1

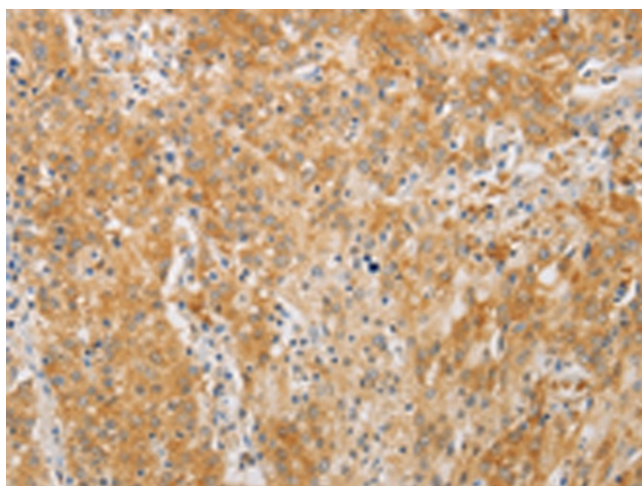
**Protein Families:** Druggable Genome

**Protein Pathways:** Progesterone-mediated oocyte maturation, Purine metabolism

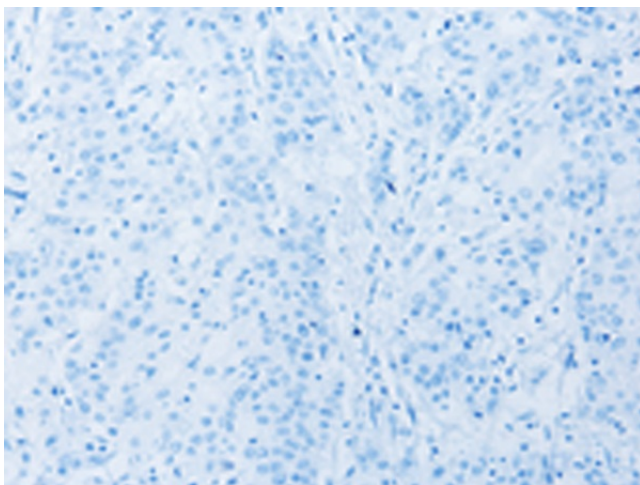
**Product images:**



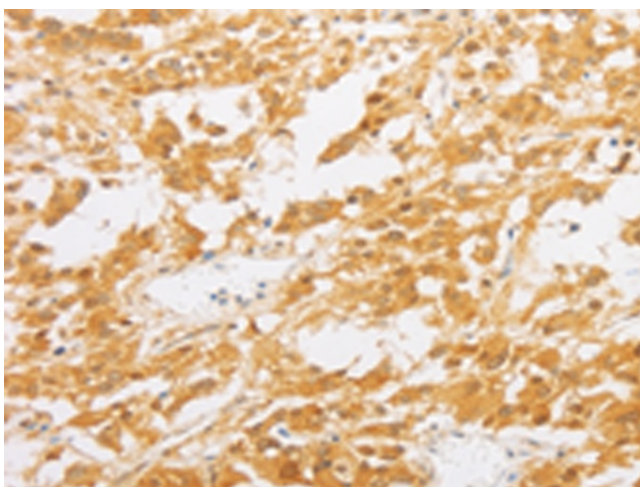
Gel: 8%SDS-PAGE  
 Lysate: 40 µg  
 Lane 1-4: Human bladder carcinoma tissue  
 A172 cells  
 human fetal brain tissue  
 hela cells  
 Primary antibody: [TA349429] (PDE4D Antibody)  
 at dilution 1/500  
 Secondary antibody: Goat anti rabbit IgG at  
 1/8000 dilution  
 Exposure time: 10 seconds



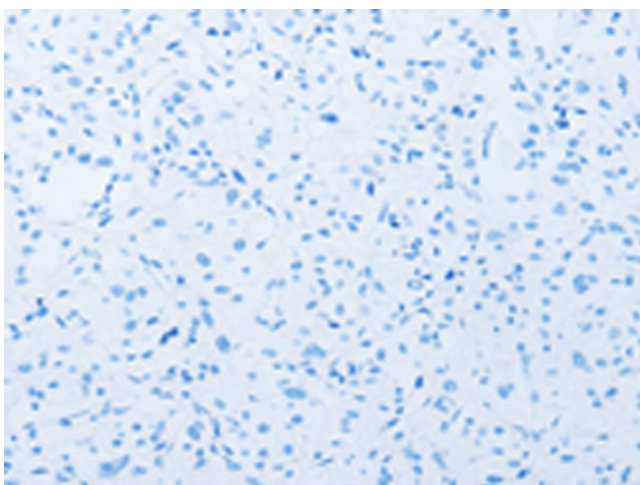
Immunohistochemistry of paraffin-embedded  
 Human gastric cancer tissue using [TA349429]  
 (PDE4D Antibody) at dilution 1/20 (Original  
 magnification: ×200)



Immunohistochemistry of paraffin-embedded Human gastric cancer tissue using [TA349429] (PDE4D Antibody) at dilution 1/20, treated with fusion protein. (Original magnification:  $\times 200$ )



Immunohistochemistry of paraffin-embedded Human thyroid cancer tissue using [TA349429] (PDE4D Antibody) at dilution 1/20 (Original magnification:  $\times 200$ )



Immunohistochemistry of paraffin-embedded Human thyroid cancer tissue using [TA349429] (PDE4D Antibody) at dilution 1/20, treated with fusion protein. (Original magnification:  $\times 200$ )