

Product datasheet for **TA349428**

PAR6 (PARD6A) Rabbit Polyclonal Antibody

Product data:

Product Type:	Primary Antibodies
Applications:	IHC
Recommended Dilution:	IHC: 50-200 Positive control: Human colon cancer Predicted cell location: Cytoplasm
Reactivity:	Human, Mouse, Rat
Host:	Rabbit
Isotype:	IgG
Clonality:	Polyclonal
Immunogen:	Fusion protein of human PARD6A
Formulation:	pH7.4 PBS, 0.05% NaN ₃ , 40% Glycerol
Concentration:	lot specific
Purification:	Antigen affinity purification
Conjugation:	Unconjugated
Storage:	Store at -20°C as received.
Stability:	Stable for 12 months from date of receipt.
Gene Name:	par-6 family cell polarity regulator alpha
Database Link:	NP_058644 Entrez Gene 56513 Mouse Entrez Gene 307799 Rat Entrez Gene 50855 Human Q9NPB6
Background:	This gene is a member of the PAR6 family and encodes a protein with a PSD95/Disc-large/ZO1 (PDZ) domain and a semi-Cdc42/Rac interactive binding (CRIB) domain. This cell membrane protein is involved in asymmetrical cell division and cell polarization processes as a member of a multi-protein complex. The protein also has a role in the epithelial-to-mesenchymal transition (EMT) that characterizes the invasive phenotype associated with metastatic carcinomas. Alternate transcriptional splice variants, encoding different isoforms, have been characterized.
Synonyms:	PAR-6A; PAR6; PAR6alpha; PAR6C; TAX40; TIP-40

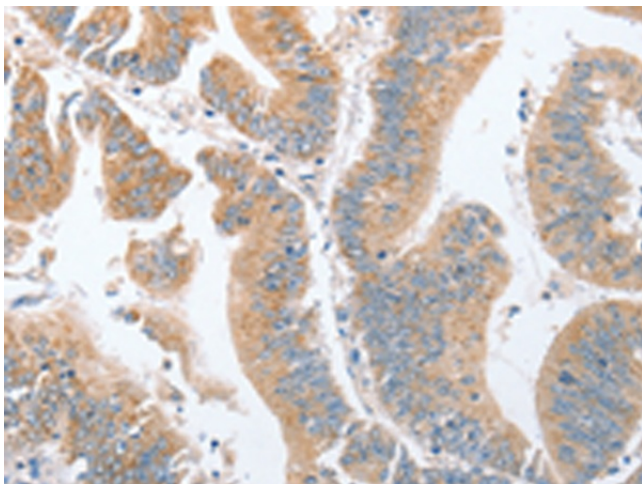


[View online »](#)

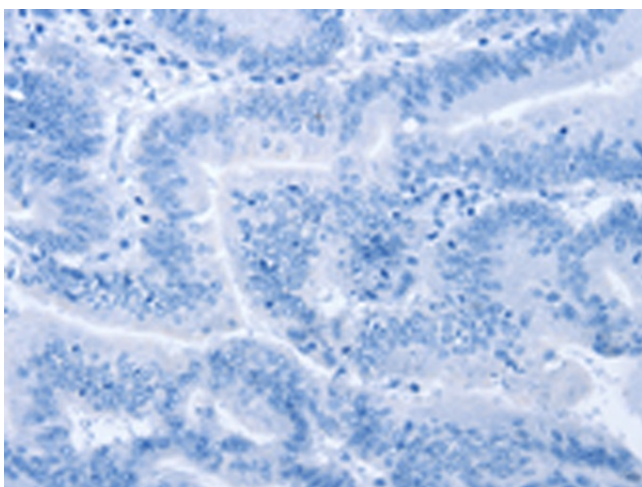
Protein Families: Druggable Genome, Transcription Factors

Protein Pathways: Endocytosis, Tight junction

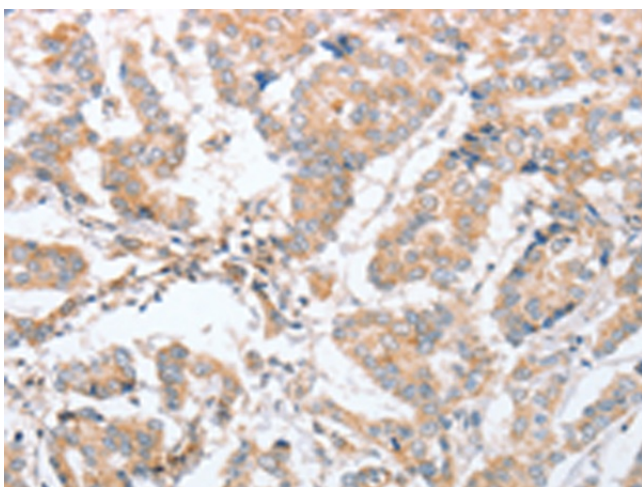
Product images:



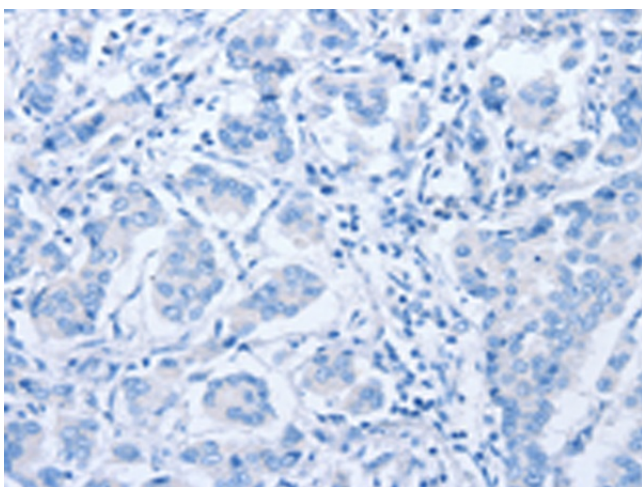
Immunohistochemistry of paraffin-embedded Human colon cancer tissue using TA349428 (PARD6A Antibody) at dilution 1/60 (Original magnification: $\times 200$)



Immunohistochemistry of paraffin-embedded Human colon cancer tissue using TA349428 (PARD6A Antibody) at dilution 1/60, treated with fusion protein. (Original magnification: $\times 200$)



Immunohistochemistry of paraffin-embedded Human breast cancer tissue using TA349428 (PARD6A Antibody) at dilution 1/60 (Original magnification: ×200)



Immunohistochemistry of paraffin-embedded Human breast cancer tissue using TA349428 (PARD6A Antibody) at dilution 1/60, treated with fusion protein. (Original magnification: ×200)