

Product datasheet for **TA349427S**

PAK6 Rabbit Polyclonal Antibody

Product data:

Product Type:	Primary Antibodies
Applications:	IHC
Recommended Dilution:	IHC: 50-100 Positive control: Human ovarian cancer Predicted cell location: Cytoplasm
Reactivity:	Human, Mouse
Host:	Rabbit
Isotype:	IgG
Clonality:	Polyclonal
Immunogen:	Fusion protein of human PAK6
Formulation:	pH7.4 PBS, 0.05% NaN ₃ , 40% Glycerol
Purification:	Antigen affinity purification
Conjugation:	Unconjugated
Storage:	Store at -20°C as received.
Stability:	Stable for 12 months from date of receipt.
Gene Name:	p21 (RAC1) activated kinase 6
Database Link:	NP_064553 Entrez Gene 56924 Human Q9NQU5
Background:	This gene encodes a member of a family of p21-stimulated serine/threonine protein kinases, which contain an amino-terminal Cdc42/Rac interactive binding (CRIB) domain and a carboxyl-terminal kinase domain. These kinases function in a number of cellular processes, including cytoskeleton rearrangement, apoptosis, and the mitogen-activated protein (MAP) kinase signaling pathway. The protein encoded by this gene interacts with androgen receptor (AR) and translocates to the nucleus, where it is involved in transcriptional regulation. Changes in expression of this gene have been linked to prostate cancer. Alternative splicing results in multiple transcript variants.
Synonyms:	PAK5

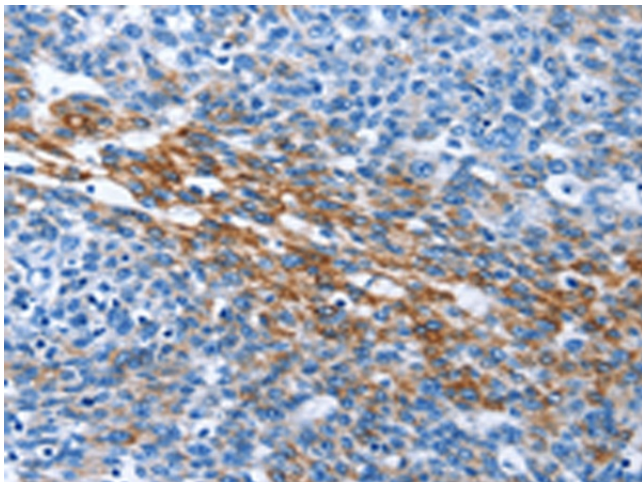


[View online »](#)

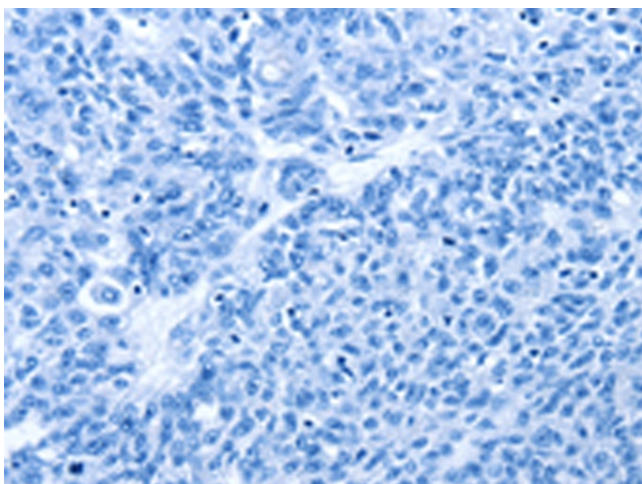
Protein Families: Druggable Genome, Protein Kinase

Protein Pathways: Axon guidance, ErbB signaling pathway, Focal adhesion, Regulation of actin cytoskeleton, Renal cell carcinoma, T cell receptor signaling pathway

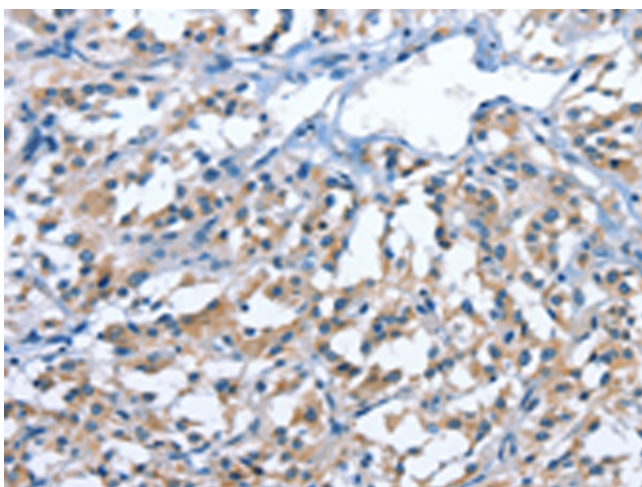
Product images:



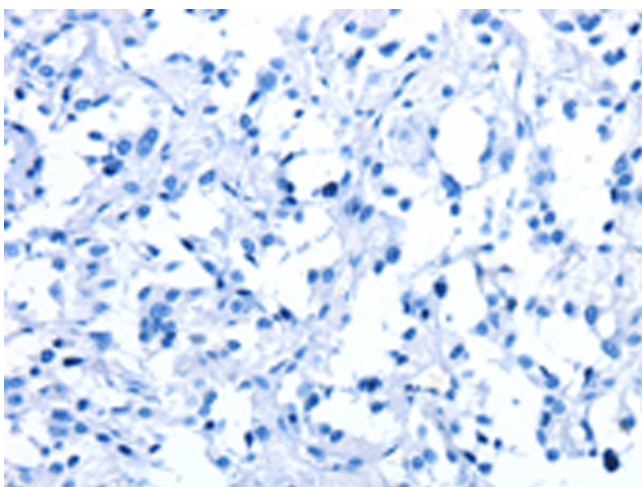
Immunohistochemistry of paraffin-embedded Human ovarian cancer tissue using [TA349427] (PAK6 Antibody) at dilution 1/40 (Original magnification: $\times 200$)



Immunohistochemistry of paraffin-embedded Human ovarian cancer tissue using [TA349427] (PAK6 Antibody) at dilution 1/40, treated with fusion protein. (Original magnification: $\times 200$)



Immunohistochemistry of paraffin-embedded Human thyroid cancer tissue using [TA349427] (PAK6 Antibody) at dilution 1/40 (Original magnification: $\times 200$)



Immunohistochemistry of paraffin-embedded Human thyroid cancer tissue using [TA349427] (PAK6 Antibody) at dilution 1/40, treated with fusion protein. (Original magnification: $\times 200$)