

Product datasheet for **TA349426**

PAK2 Rabbit Polyclonal Antibody

Product data:

Product Type:	Primary Antibodies
Applications:	IHC, WB
Recommended Dilution:	WB: 200-1000 WB positive control: A172 cells IHC: 50-200 Positive control: Human liver cancer Predicted cell location: Cytoplasm
Reactivity:	Human, Mouse, Rat
Host:	Rabbit
Isotype:	IgG
Clonality:	Polyclonal
Immunogen:	Fusion protein of human PAK2
Formulation:	pH7.4 PBS, 0.05% NaN ₃ , 40% Glycerol
Concentration:	lot specific
Purification:	Antigen affinity purification
Conjugation:	Unconjugated
Storage:	Store at -20°C as received.
Stability:	Stable for 12 months from date of receipt.
Predicted Protein Size:	58 kDa
Gene Name:	p21 (RAC1) activated kinase 2
Database Link:	NP_002568 Entrez Gene 29432 Rat Entrez Gene 224105 Mouse Entrez Gene 5062 Human Q13177



[View online »](#)

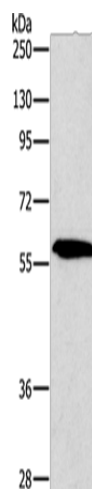
Background: The p21 activated kinases (PAK) are critical effectors that link Rho GTPases to cytoskeleton reorganization and nuclear signaling. The PAK proteins are a family of serine/threonine kinases that serve as targets for the small GTP binding proteins, CDC42 and RAC1, and have been implicated in a wide range of biological activities. The protein encoded by this gene is activated by proteolytic cleavage during caspase-mediated apoptosis, and may play a role in regulating the apoptotic events in the dying cell.

Synonyms: PAK65; PAKgamma

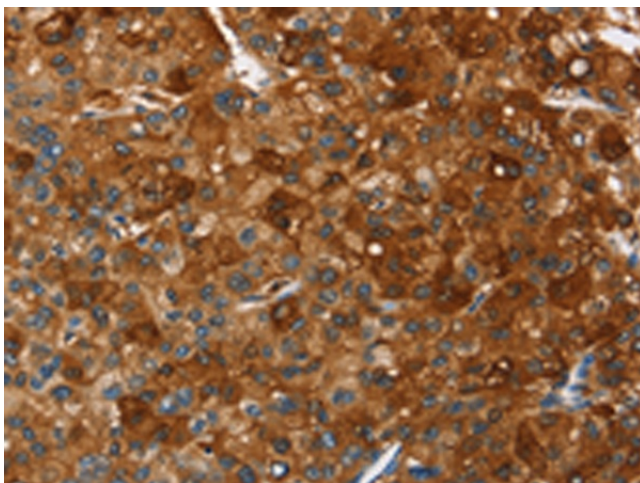
Protein Families: Druggable Genome, Protein Kinase

Protein Pathways: Axon guidance, ErbB signaling pathway, Focal adhesion, MAPK signaling pathway, Regulation of actin cytoskeleton, Renal cell carcinoma, T cell receptor signaling pathway

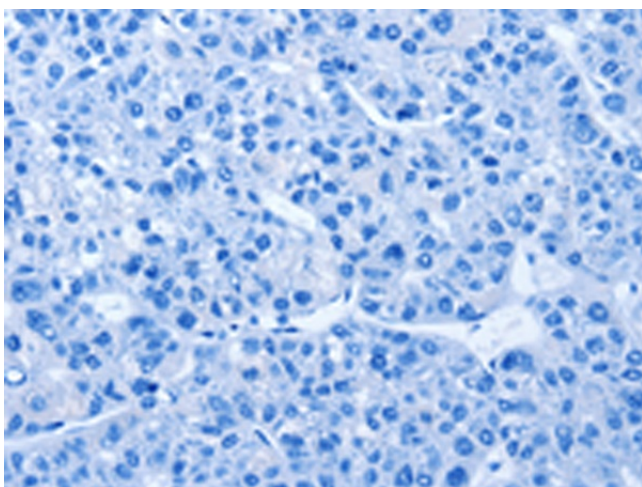
Product images:



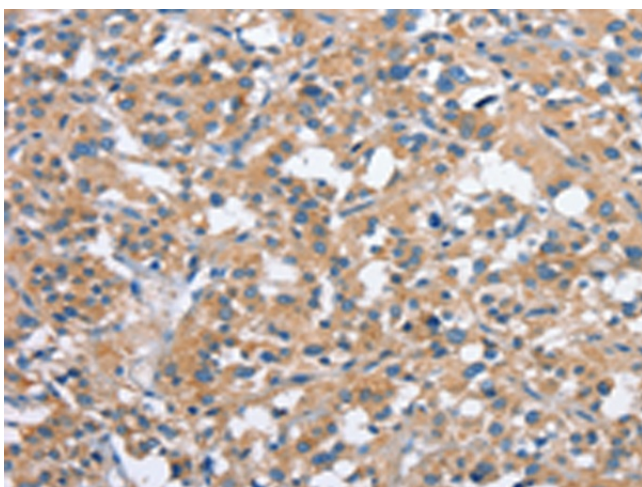
Gel: 10%SDS-PAGE
Lysate: 20 µg
Lane: A172 cells
Primary antibody: TA349426 (PAK2 Antibody) at dilution 1/400
Secondary antibody: Goat anti rabbit IgG at 1/8000 dilution
Exposure time: 5 minutes



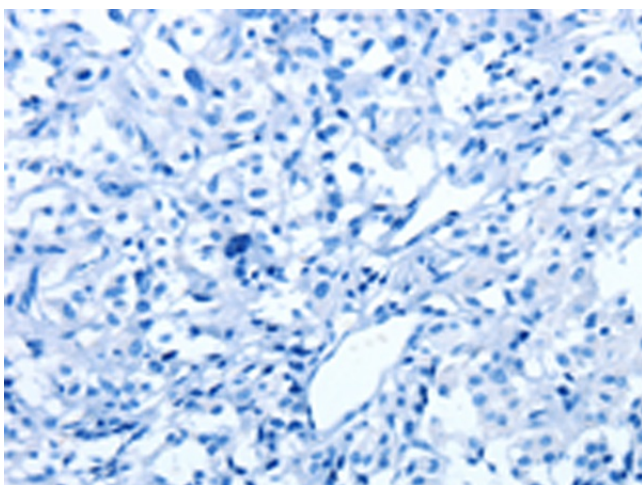
Immunohistochemistry of paraffin-embedded Human liver cancer tissue using TA349426 (PAK2 Antibody) at dilution 1/40 (Original magnification: ×200)



Immunohistochemistry of paraffin-embedded Human liver cancer tissue using TA349426 (PAK2 Antibody) at dilution 1/40, treated with fusion protein. (Original magnification: x200)



Immunohistochemistry of paraffin-embedded Human thyroid cancer tissue using TA349426 (PAK2 Antibody) at dilution 1/40 (Original magnification: x200)



Immunohistochemistry of paraffin-embedded Human thyroid cancer tissue using TA349426 (PAK2 Antibody) at dilution 1/40, treated with fusion protein. (Original magnification: x200)