

Product datasheet for **TA349425S**

SERPINE2 Rabbit Polyclonal Antibody

Product data:

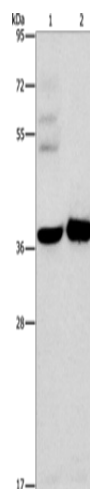
Product Type:	Primary Antibodies
Applications:	IHC, WB
Recommended Dilution:	WB: 500-2000 WB positive control: A172 cells and human fetal brain tissue IHC: 25-100 Positive control: Human brain Predicted cell location: Cytoplasm
Reactivity:	Human, Mouse, Rat
Host:	Rabbit
Isotype:	IgG
Clonality:	Polyclonal
Immunogen:	Fusion protein of human SERPINE2
Formulation:	pH7.4 PBS, 0.05% NaN ₃ , 40% Glycerol
Purification:	Antigen affinity purification
Conjugation:	Unconjugated
Storage:	Store at -20°C as received.
Stability:	Stable for 12 months from date of receipt.
Predicted Protein Size:	44 kDa
Gene Name:	serpin family E member 2
Database Link:	NP_006207 Entrez Gene 20720 Mouse Entrez Gene 29366 Rat Entrez Gene 5270 Human P07093
Background:	This gene encodes a member of the serpin family of proteins, a group of proteins that inhibit serine proteases. Thrombin, urokinase, plasmin and trypsin are among the proteases that this family member can inhibit. This gene is a susceptibility gene for chronic obstructive pulmonary disease and for emphysema. Alternative splicing results in multiple transcript variants.
Synonyms:	GDN; GDNPF; PI-7; PI7; PN-1; PN1; PNI



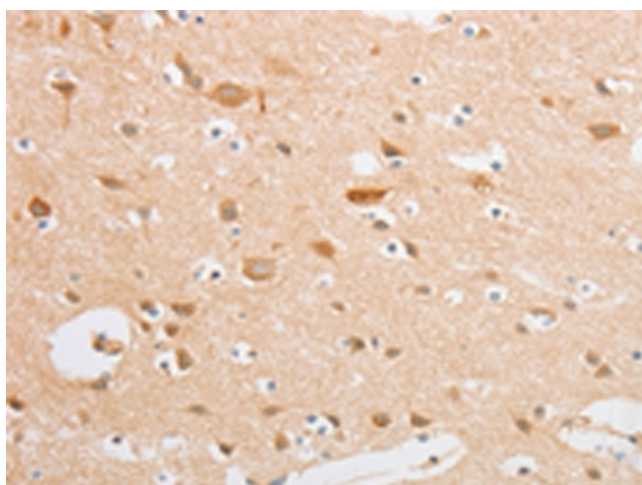
[View online »](#)

Protein Families: Druggable Genome, Secreted Protein

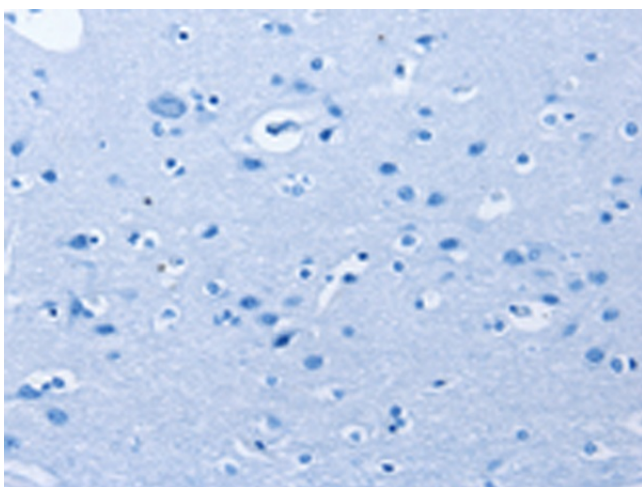
Product images:



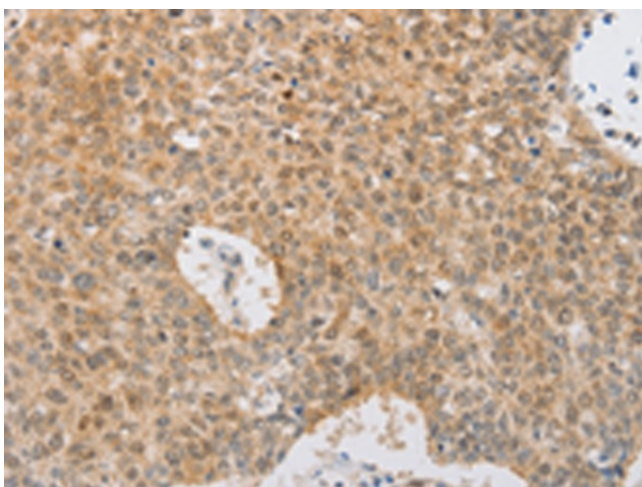
Gel: 8%SDS-PAGE
Lysate: 40 µg
Lane 1-2: A172 cells
human fetal brain tissue
Primary antibody: [TA349425] (SERPINE2 Antibody) at dilution 1/450
Secondary antibody: Goat anti rabbit IgG at 1/8000 dilution
Exposure time: 15 seconds



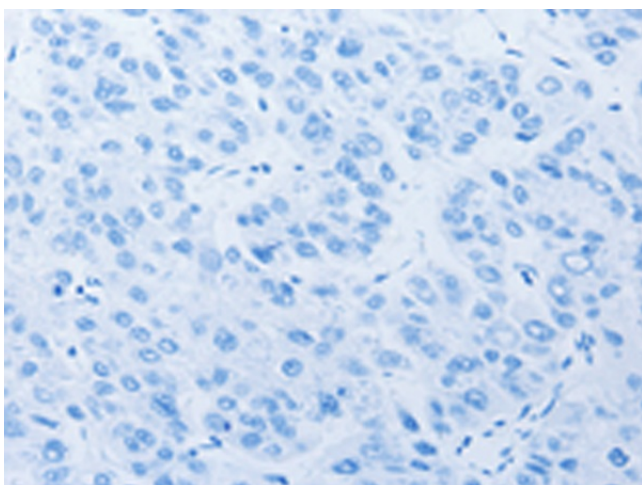
Immunohistochemistry of paraffin-embedded Human brain tissue using [TA349425] (SERPINE2 Antibody) at dilution 1/20 (Original magnification: ×200)



Immunohistochemistry of paraffin-embedded Human brain tissue using [TA349425] (SERPINE2 Antibody) at dilution 1/20, treated with fusion protein. (Original magnification: $\times 200$)



Immunohistochemistry of paraffin-embedded Human lung cancer tissue using [TA349425] (SERPINE2 Antibody) at dilution 1/20 (Original magnification: $\times 200$)



Immunohistochemistry of paraffin-embedded Human lung cancer tissue using [TA349425] (SERPINE2 Antibody) at dilution 1/20, treated with fusion protein. (Original magnification: $\times 200$)