

## Product datasheet for **TA349425**

### SERPINE2 Rabbit Polyclonal Antibody

#### Product data:

Product Type:	Primary Antibodies
Applications:	IHC, WB
Recommended Dilution:	WB: 500-2000 WB positive control: A172 cells and human fetal brain tissue IHC: 25-100 Positive control: Human brain Predicted cell location: Cytoplasm
Reactivity:	Human, Mouse, Rat
Host:	Rabbit
Isotype:	IgG
Clonality:	Polyclonal
Immunogen:	Fusion protein of human SERPINE2
Formulation:	pH7.4 PBS, 0.05% NaN <sub>3</sub> , 40% Glycerol
Concentration:	lot specific
Purification:	Antigen affinity purification
Conjugation:	Unconjugated
Storage:	Store at -20°C as received.
Stability:	Stable for 12 months from date of receipt.
Predicted Protein Size:	44 kDa
Gene Name:	serpin family E member 2
Database Link:	<a href="#">NP_006207</a> <a href="#">Entrez Gene 20720 Mouse</a> <a href="#">Entrez Gene 29366 Rat</a> <a href="#">Entrez Gene 5270 Human</a> <a href="#">P07093</a>
Background:	This gene encodes a member of the serpin family of proteins, a group of proteins that inhibit serine proteases. Thrombin, urokinase, plasmin and trypsin are among the proteases that this family member can inhibit. This gene is a susceptibility gene for chronic obstructive pulmonary disease and for emphysema. Alternative splicing results in multiple transcript variants.

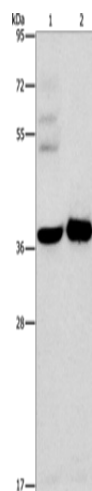


[View online »](#)

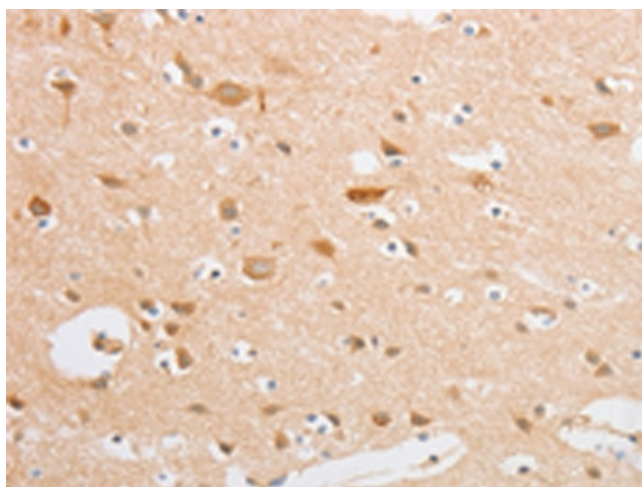
**Synonyms:** GDN; GDNPF; PI-7; PI7; PN-1; PN1; PNI

**Protein Families:** Druggable Genome, Secreted Protein

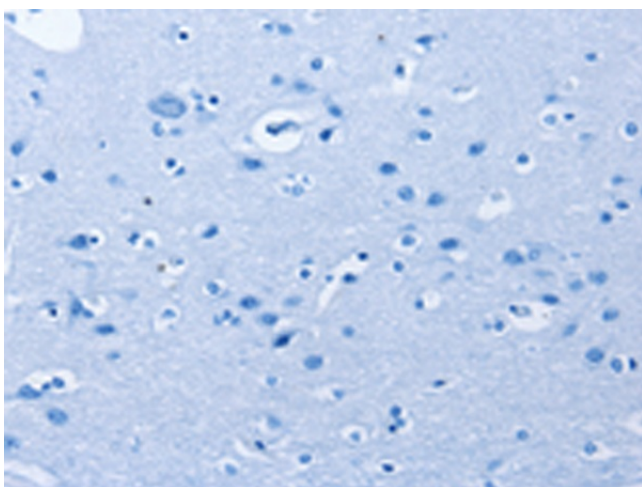
**Product images:**



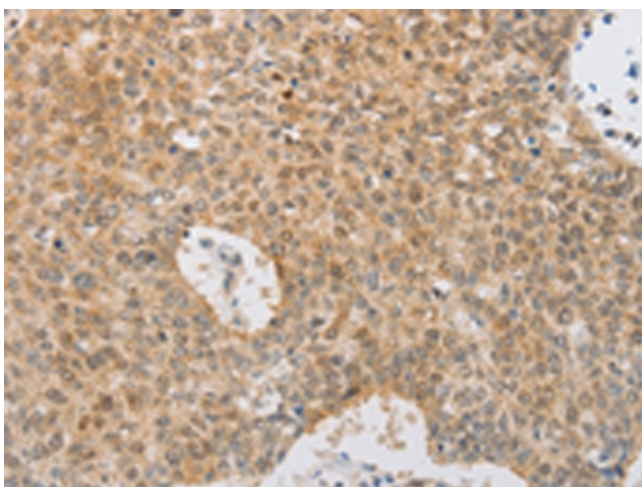
Gel: 8%SDS-PAGE  
Lysate: 40  $\mu$ g  
Lane 1-2: A172 cells  
human fetal brain tissue  
Primary antibody: TA349425 (SERPINE2 Antibody)  
at dilution 1/450  
Secondary antibody: Goat anti rabbit IgG at  
1/8000 dilution  
Exposure time: 15 seconds



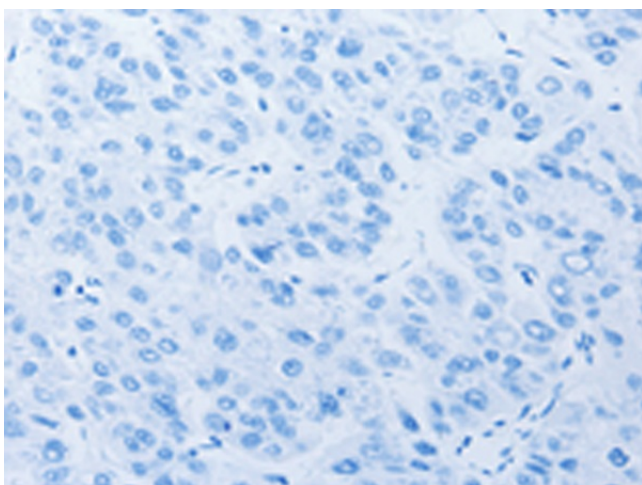
Immunohistochemistry of paraffin-embedded  
Human brain tissue using TA349425 (SERPINE2  
Antibody) at dilution 1/20 (Original magnification:  
 $\times$ 200)



Immunohistochemistry of paraffin-embedded Human brain tissue using TA349425 (SERPINE2 Antibody) at dilution 1/20, treated with fusion protein. (Original magnification:  $\times 200$ )



Immunohistochemistry of paraffin-embedded Human lung cancer tissue using TA349425 (SERPINE2 Antibody) at dilution 1/20 (Original magnification:  $\times 200$ )



Immunohistochemistry of paraffin-embedded Human lung cancer tissue using TA349425 (SERPINE2 Antibody) at dilution 1/20, treated with fusion protein. (Original magnification:  $\times 200$ )