

## Product datasheet for **TA349420S**

### Nuclear Factor Erythroid 2 Related Factor 1 (NFE2L1) Rabbit Polyclonal Antibody

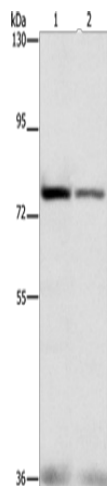
#### Product data:

Product Type:	Primary Antibodies
Applications:	IHC, WB
Recommended Dilution:	WB: 200-1000 WB positive control: HepG2 and hela cells IHC: 25-100 Positive control: Human liver cancer Predicted cell location: Cytoplasm
Reactivity:	Human, Mouse
Host:	Rabbit
Isotype:	IgG
Clonality:	Polyclonal
Immunogen:	Fusion protein of human NFE2L1
Formulation:	pH7.4 PBS, 0.05% NaN <sub>3</sub> , 40% Glycerol
Purification:	Antigen affinity purification
Conjugation:	Unconjugated
Storage:	Store at -20°C as received.
Stability:	Stable for 12 months from date of receipt.
Predicted Protein Size:	85 kDa
Gene Name:	nuclear factor, erythroid 2 like 1
Database Link:	<a href="#">NP_003195</a> <a href="#">Entrez Gene 18023 Mouse</a> <a href="#">Entrez Gene 4779 Human</a> <a href="#">Q14494</a>
Background:	This gene encodes a protein that is involved in globin gene expression in erythrocytes. Confusion has occurred in bibliographic databases due to the shared symbol of NRF1 for this gene, NFE2L1, and for "nuclear respiratory factor 1" which has an official symbol of NRF1.
Synonyms:	LCR-F1; NRF1; TCF11
Protein Families:	Transcription Factors

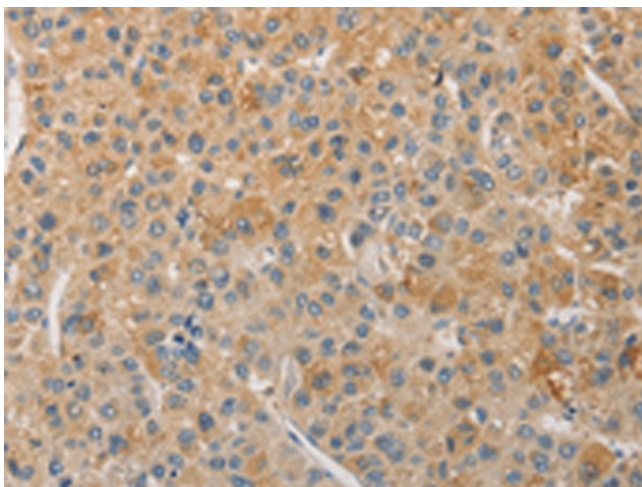


[View online »](#)

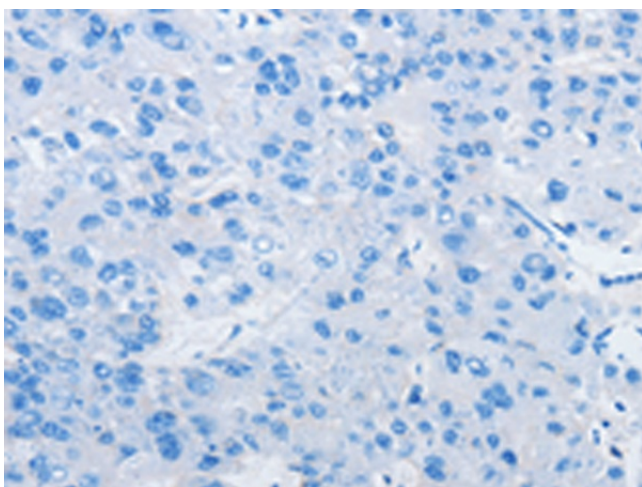
## Product images:



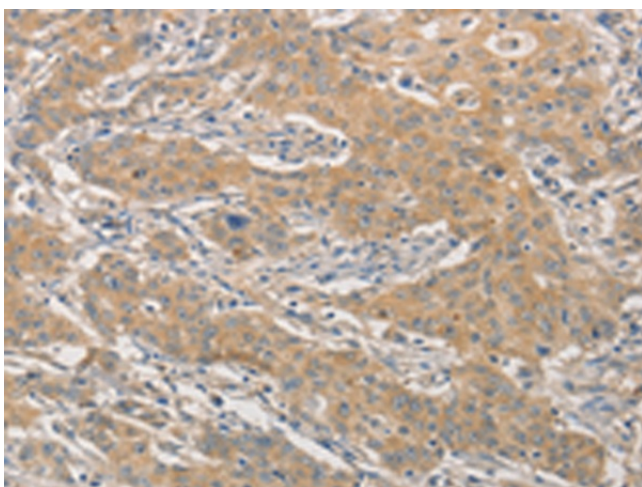
Gel: 6%SDS-PAGE  
Lysate: 40  $\mu$ g  
Lane 1-2: HepG2 cells  
hela cells  
Primary antibody: [TA349420] (NFE2L1 Antibody)  
at dilution 1/280  
Secondary antibody: Goat anti rabbit IgG at  
1/8000 dilution  
Exposure time: 30 seconds



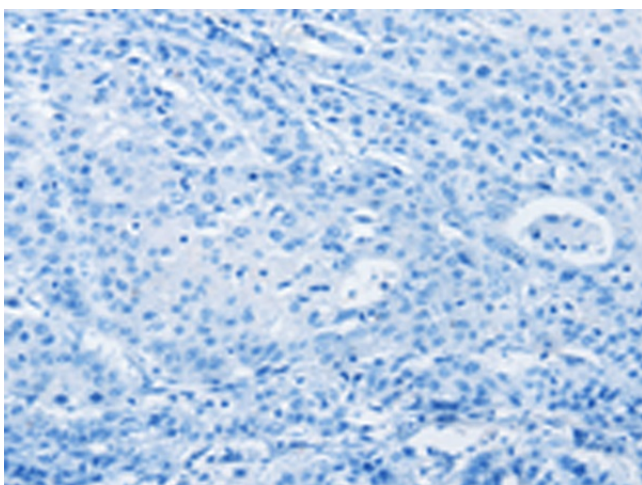
Immunohistochemistry of paraffin-embedded  
Human liver cancer tissue using [TA349420]  
(NFE2L1 Antibody) at dilution 1/30 (Original  
magnification:  $\times$ 200)



Immunohistochemistry of paraffin-embedded Human liver cancer tissue using [TA349420] (NFE2L1 Antibody) at dilution 1/30, treated with fusion protein. (Original magnification: ×200)



Immunohistochemistry of paraffin-embedded Human gastric cancer tissue using [TA349420] (NFE2L1 Antibody) at dilution 1/30 (Original magnification: ×200)



Immunohistochemistry of paraffin-embedded Human gastric cancer tissue using [TA349420] (NFE2L1 Antibody) at dilution 1/30, treated with fusion protein. (Original magnification: ×200)