

## Product datasheet for **TA349418**

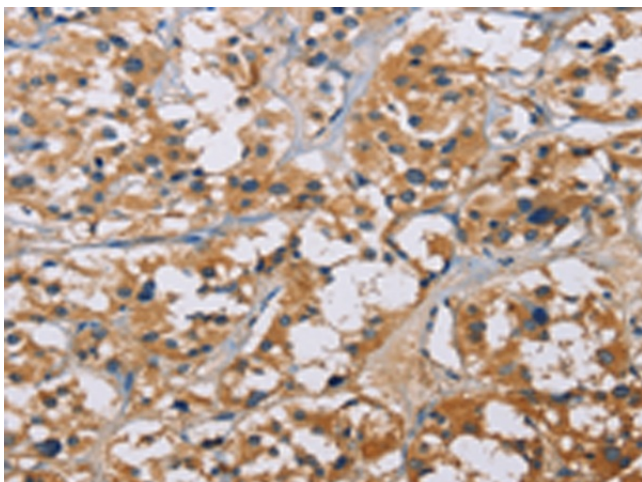
### NME5 Rabbit Polyclonal Antibody

#### Product data:

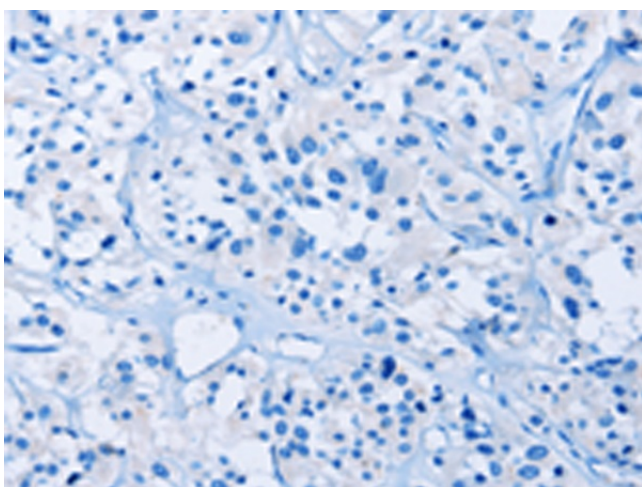
Product Type:	Primary Antibodies
Applications:	IHC
Recommended Dilution:	IHC: 50-200 Positive control: Human thyroid cancer Predicted cell location: Cytoplasm
Reactivity:	Human, Mouse
Host:	Rabbit
Isotype:	IgG
Clonality:	Polyclonal
Immunogen:	Fusion protein of human NME5
Formulation:	pH7.4 PBS, 0.05% NaN <sub>3</sub> , 40% Glycerol
Concentration:	lot specific
Purification:	Antigen affinity purification
Conjugation:	Unconjugated
Storage:	Store at -20°C as received.
Stability:	Stable for 12 months from date of receipt.
Gene Name:	NME/NM23 family member 5
Database Link:	<a href="#">NP_003542</a> <a href="#">Entrez Gene 75533 Mouse</a> <a href="#">Entrez Gene 8382 Human</a> <a href="#">P56597</a>
Background:	The NME5 gene encodes a 212-amino acid polypeptide with homology to the NDP kinases. Northern blot analysis detected abundant expression of a 1.1-kb mRNA in testis. In situ hybridization to testis revealed NME5 mRNA in the seminiferous tubules in a pattern consistent with stage-specific expression in germinal cells during spermatogenesis.
Synonyms:	NM23-H5; NM23H5; RSPH23
Protein Families:	Druggable Genome
Protein Pathways:	Metabolic pathways, Purine metabolism, Pyrimidine metabolism



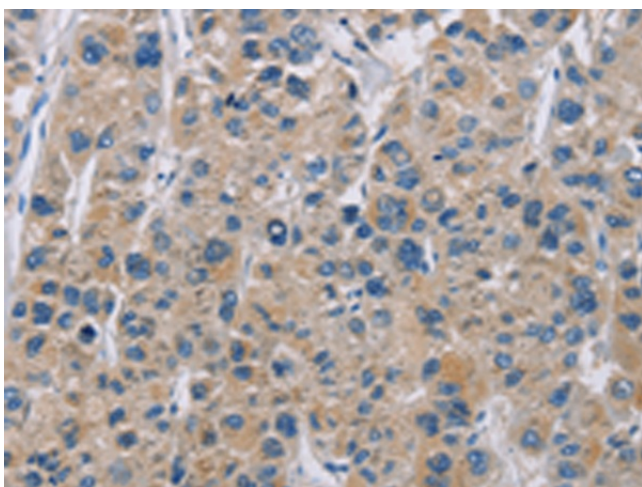
[View online »](#)

**Product images:**

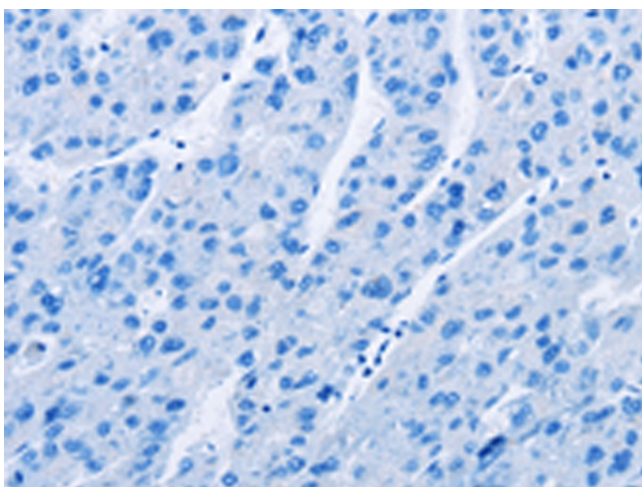
Immunohistochemistry of paraffin-embedded Human thyroid cancer tissue using TA349418 (NME5 Antibody) at dilution 1/50 (Original magnification:  $\times 200$ )



Immunohistochemistry of paraffin-embedded Human thyroid cancer tissue using TA349418 (NME5 Antibody) at dilution 1/50, treated with fusion protein. (Original magnification:  $\times 200$ )



Immunohistochemistry of paraffin-embedded Human liver cancer tissue using TA349418 (NME5 Antibody) at dilution 1/50 (Original magnification:  $\times 200$ )



Immunohistochemistry of paraffin-embedded Human liver cancer tissue using TA349418 (NME5 Antibody) at dilution 1/50, treated with fusion protein. (Original magnification:  $\times 200$ )