

## Product datasheet for **TA349410**

### Nicotinic Acetylcholine Receptor alpha 4 (CHRNA4) Rabbit Polyclonal Antibody

#### Product data:

Product Type:	Primary Antibodies
Applications:	IHC, WB
Recommended Dilution:	WB: 200-1000 WB positive control: Lovo and 293T cells IHC: 25-100 Positive control: Human prostate cancer Predicted cell location: Cytoplasm
Reactivity:	Human
Host:	Rabbit
Isotype:	IgG
Clonality:	Polyclonal
Immunogen:	Fusion protein of human CHRNA4
Formulation:	pH7.4 PBS, 0.05% NaN <sub>3</sub> , 40% Glycerol
Concentration:	lot specific
Purification:	Antigen affinity purification
Conjugation:	Unconjugated
Storage:	Store at -20°C as received.
Stability:	Stable for 12 months from date of receipt.
Predicted Protein Size:	70 kDa
Gene Name:	cholinergic receptor nicotinic alpha 4 subunit
Database Link:	<a href="#">NP_000735</a> <a href="#">Entrez Gene 1137 Human P43681</a>



[View online »](#)

**Background:**

This gene encodes a nicotinic acetylcholine receptor, which belongs to a superfamily of ligand-gated ion channels that play a role in fast signal transmission at synapses. These pentameric receptors can bind acetylcholine, which causes an extensive change in conformation that leads to the opening of an ion-conducting channel across the plasma membrane. This protein is an integral membrane receptor subunit that can interact with either nAChR beta-2 or nAChR beta-4 to form a functional receptor. Mutations in this gene cause nocturnal frontal lobe epilepsy type 1.

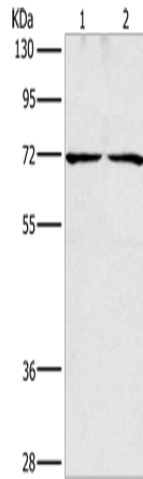
**Synonyms:**

BFNC; EBN; EBN1; NACHR; NACHRA4; NACRA4

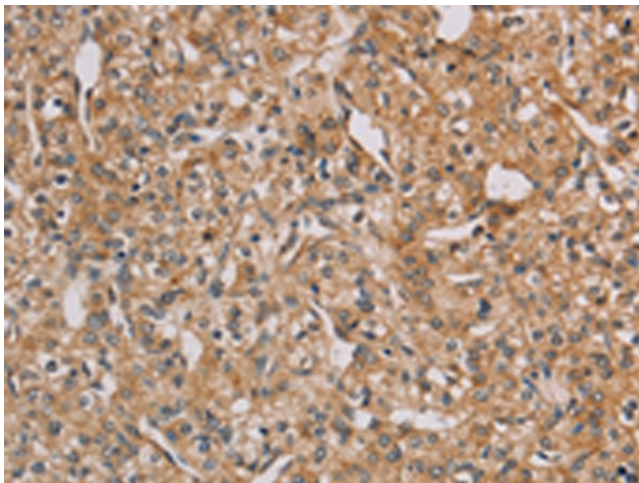
**Protein Families:**

Druggable Genome, Ion Channels: Cys-loop Receptors, Transmembrane

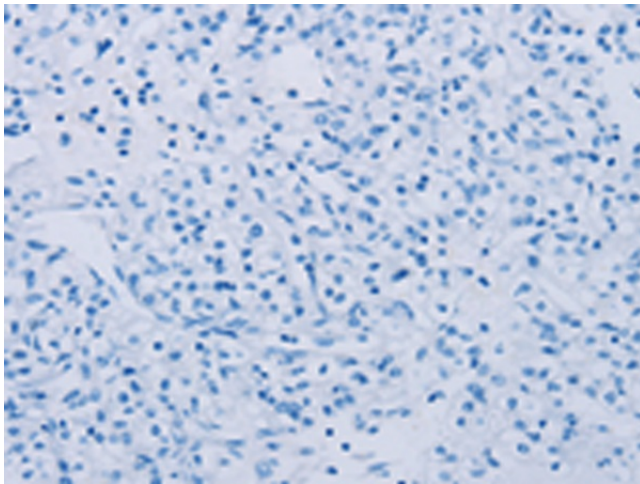
**Product images:**



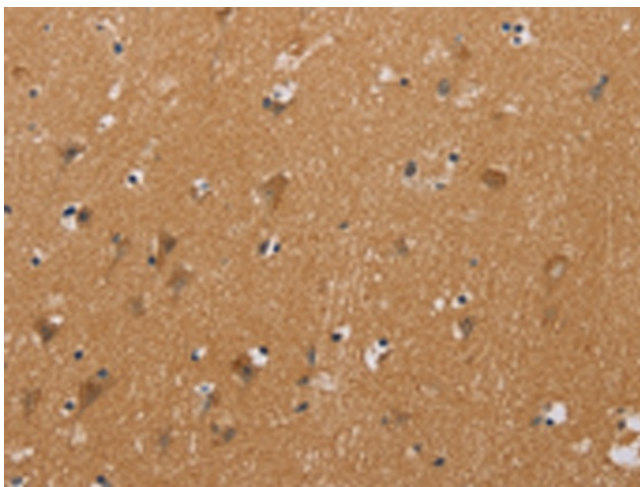
Gel: 8%SDS-PAGE  
 Lysate: 40 µg  
 Lane 1-2: Lovo cells  
 293T cells  
 Primary antibody: TA349410 (CHRNA4 Antibody)  
 at dilution 1/200  
 Secondary antibody: Goat anti rabbit IgG at  
 1/8000 dilution  
 Exposure time: 5 seconds



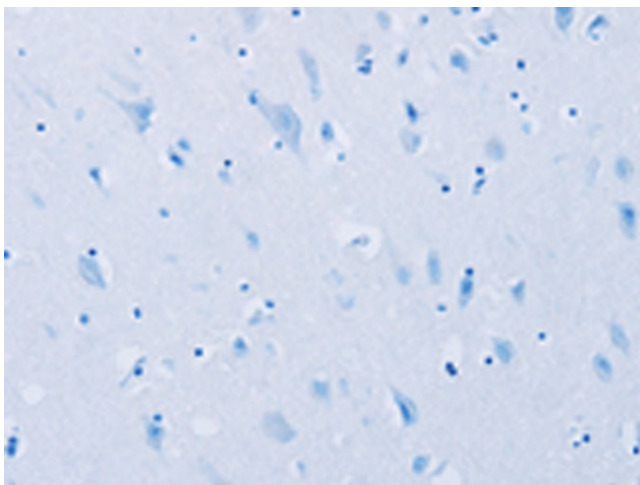
Immunohistochemistry of paraffin-embedded  
 Human prostate cancer tissue using TA349410  
 (CHRNA4 Antibody) at dilution 1/20 (Original  
 magnification: ×200)



Immunohistochemistry of paraffin-embedded Human prostate cancer tissue using TA349410 (CHRNA4 Antibody) at dilution 1/20, treated with fusion protein. (Original magnification: ×200)



Immunohistochemistry of paraffin-embedded Human brain tissue using TA349410 (CHRNA4 Antibody) at dilution 1/20 (Original magnification: ×200)



Immunohistochemistry of paraffin-embedded Human brain tissue using TA349410 (CHRNA4 Antibody) at dilution 1/20, treated with fusion protein. (Original magnification: ×200)