

Product datasheet for **TA349409S**

Myosin (MYL6) Rabbit Polyclonal Antibody

Product data:

Product Type:	Primary Antibodies
Applications:	IHC, WB
Recommended Dilution:	WB: 200-1000 WB positive control: Mouse stomach tissue IHC: 50-200 Positive control: Human thyroid cancer Predicted cell location: Cytoplasm
Reactivity:	Human, Mouse, Rat
Host:	Rabbit
Isotype:	IgG
Clonality:	Polyclonal
Immunogen:	Fusion protein of human MYL6
Formulation:	pH7.4 PBS, 0.05% NaN ₃ , 40% Glycerol
Purification:	Antigen affinity purification
Conjugation:	Unconjugated
Storage:	Store at -20°C as received.
Stability:	Stable for 12 months from date of receipt.
Predicted Protein Size:	17 kDa
Gene Name:	myosin light chain 6
Database Link:	NP_524147 Entrez Gene 17904 MouseEntrez Gene 685867 RatEntrez Gene 4637 Human P60660
Background:	Myosin is a hexameric ATPase cellular motor protein. It is composed of two heavy chains, two nonphosphorylatable alkali light chains, and two phosphorylatable regulatory light chains. This gene encodes a myosin alkali light chain that is expressed in smooth muscle and non-muscle tissues. Genomic sequences representing several pseudogenes have been described and two transcript variants encoding different isoforms have been identified for this gene.
Synonyms:	ESMLC; LC17; LC17-GI; LC17-NM; LC17A; LC17B; MLC-3; MLC1SM; MLC3NM; MLC3SM



[View online »](#)

Protein Families: Druggable Genome

Protein Pathways: Vascular smooth muscle contraction

Product images:



Gel: 10%SDS-PAGE

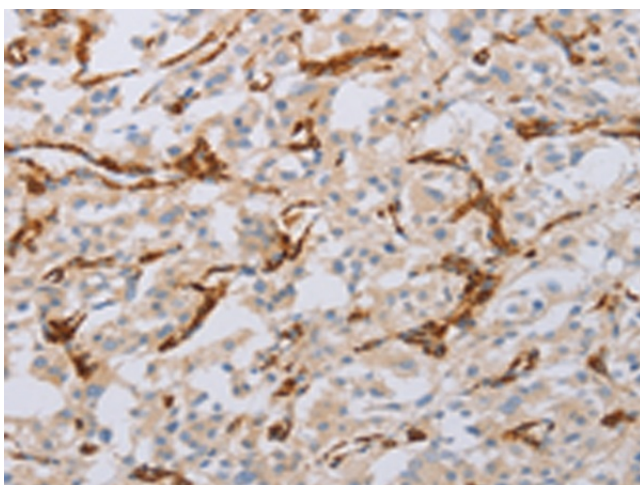
Lysate: 40 μ g

Lane: Mouse stomach tissue

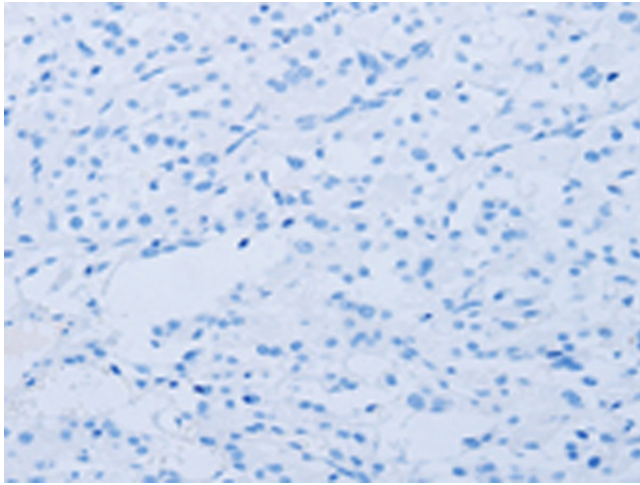
Primary antibody: [TA349409] (MYL6 Antibody) at dilution 1/262.5

Secondary antibody: Goat anti rabbit IgG at 1/8000 dilution

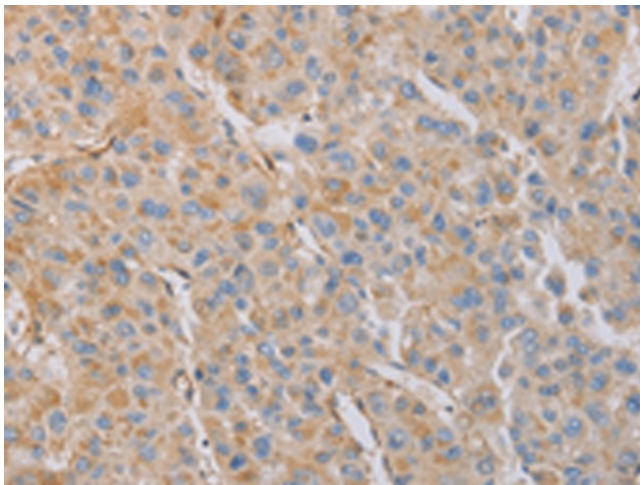
Exposure time: 30 seconds



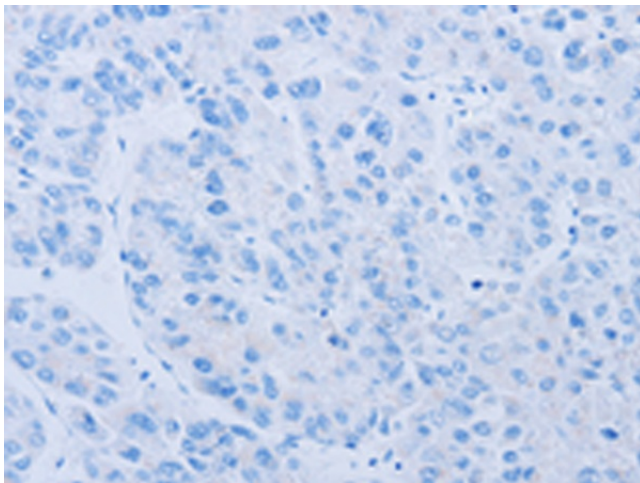
Immunohistochemistry of paraffin-embedded Human thyroid cancer tissue using [TA349409] (MYL6 Antibody) at dilution 1/50 (Original magnification: \times 200)



Immunohistochemistry of paraffin-embedded Human thyroid cancer tissue using [TA349409] (MYL6 Antibody) at dilution 1/50, treated with fusion protein. (Original magnification: ×200)



Immunohistochemistry of paraffin-embedded Human liver cancer tissue using [TA349409] (MYL6 Antibody) at dilution 1/50 (Original magnification: ×200)



Immunohistochemistry of paraffin-embedded Human liver cancer tissue using [TA349409] (MYL6 Antibody) at dilution 1/50, treated with fusion protein. (Original magnification: ×200)