

## Product datasheet for **TA349409**

### Myosin (MYL6) Rabbit Polyclonal Antibody

#### Product data:

Product Type:	Primary Antibodies
Applications:	IHC, WB
Recommended Dilution:	WB: 200-1000 WB positive control: Mouse stomach tissue IHC: 50-200 Positive control: Human thyroid cancer Predicted cell location: Cytoplasm
Reactivity:	Human, Mouse, Rat
Host:	Rabbit
Isotype:	IgG
Clonality:	Polyclonal
Immunogen:	Fusion protein of human MYL6
Formulation:	pH7.4 PBS, 0.05% NaN <sub>3</sub> , 40% Glycerol
Concentration:	lot specific
Purification:	Antigen affinity purification
Conjugation:	Unconjugated
Storage:	Store at -20°C as received.
Stability:	Stable for 12 months from date of receipt.
Predicted Protein Size:	17 kDa
Gene Name:	myosin light chain 6
Database Link:	<a href="#">NP_524147</a> <a href="#">Entrez Gene 17904 Mouse</a> <a href="#">Entrez Gene 685867 Rat</a> <a href="#">Entrez Gene 4637 Human</a> <a href="#">P60660</a>
Background:	Myosin is a hexameric ATPase cellular motor protein. It is composed of two heavy chains, two nonphosphorylatable alkali light chains, and two phosphorylatable regulatory light chains. This gene encodes a myosin alkali light chain that is expressed in smooth muscle and non-muscle tissues. Genomic sequences representing several pseudogenes have been described and two transcript variants encoding different isoforms have been identified for this gene.



[View online »](#)

**Synonyms:** ESMLC; LC17; LC17-GI; LC17-NM; LC17A; LC17B; MLC-3; MLC1SM; MLC3NM; MLC3SM

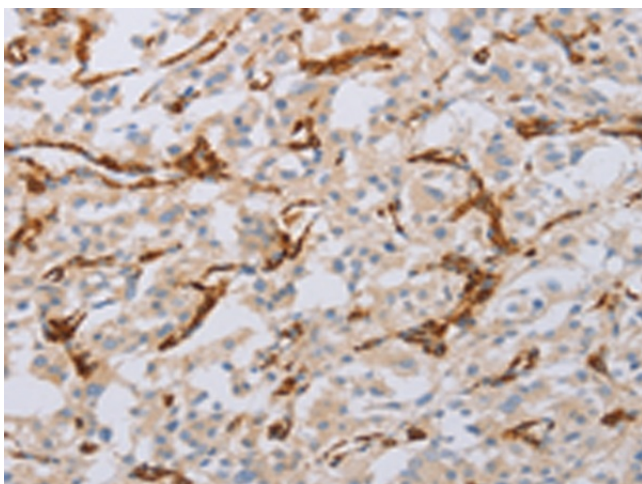
**Protein Families:** Druggable Genome

**Protein Pathways:** Vascular smooth muscle contraction

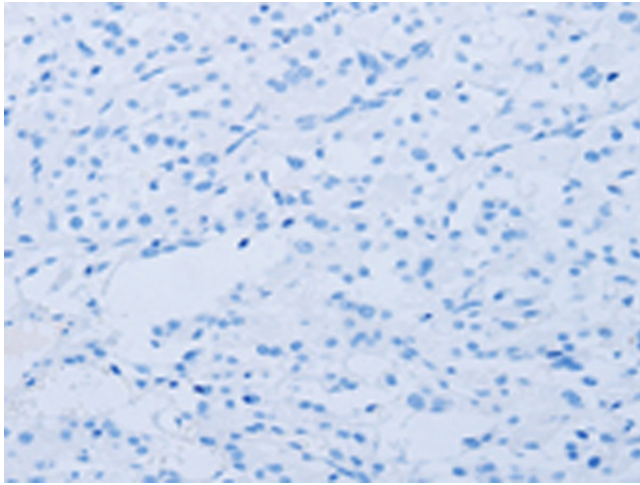
### Product images:



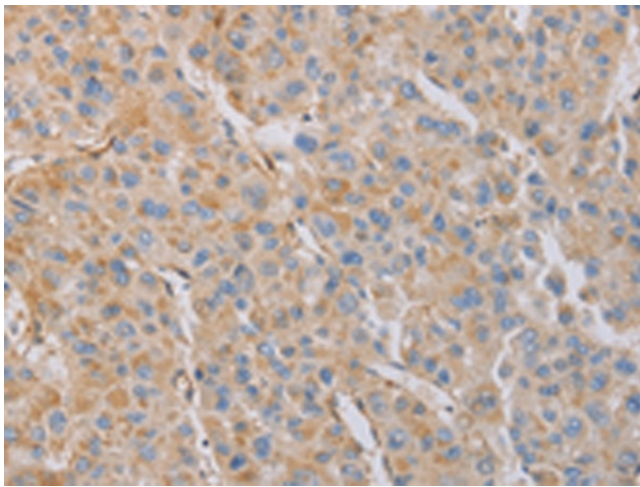
Gel: 10%SDS-PAGE  
Lysate: 40 µg  
Lane: Mouse stomach tissue  
Primary antibody: TA349409 (MYL6 Antibody) at dilution 1/262.5  
Secondary antibody: Goat anti rabbit IgG at 1/8000 dilution  
Exposure time: 30 seconds



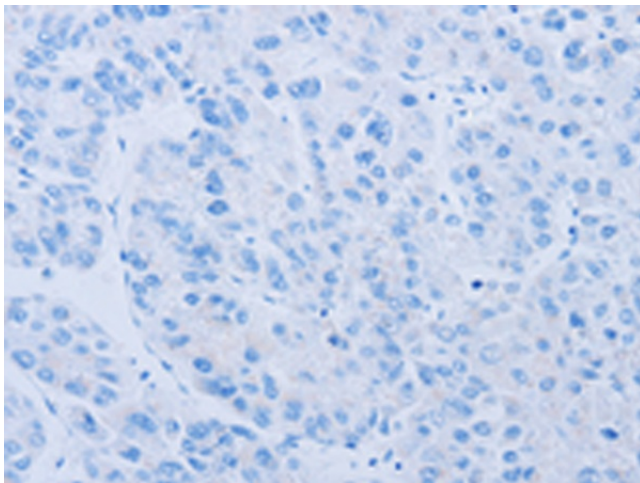
Immunohistochemistry of paraffin-embedded Human thyroid cancer tissue using TA349409 (MYL6 Antibody) at dilution 1/50 (Original magnification: ×200)



Immunohistochemistry of paraffin-embedded Human thyroid cancer tissue using TA349409 (MYL6 Antibody) at dilution 1/50, treated with fusion protein. (Original magnification:  $\times 200$ )



Immunohistochemistry of paraffin-embedded Human liver cancer tissue using TA349409 (MYL6 Antibody) at dilution 1/50 (Original magnification:  $\times 200$ )



Immunohistochemistry of paraffin-embedded Human liver cancer tissue using TA349409 (MYL6 Antibody) at dilution 1/50, treated with fusion protein. (Original magnification:  $\times 200$ )