

## Product datasheet for **TA349408**

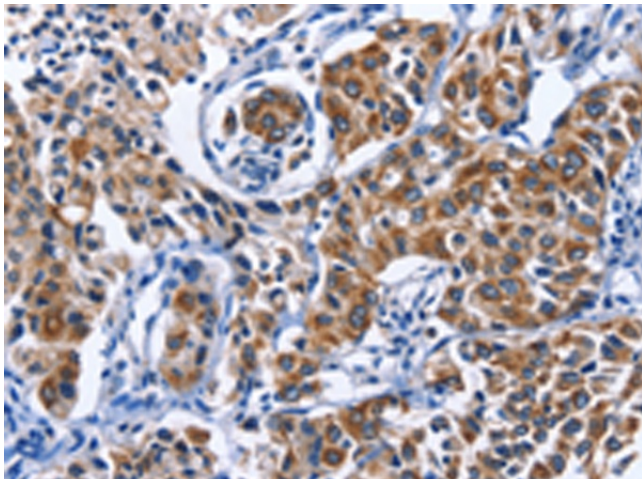
### Myosin Heavy chain 1 (MYH1) Rabbit Polyclonal Antibody

#### Product data:

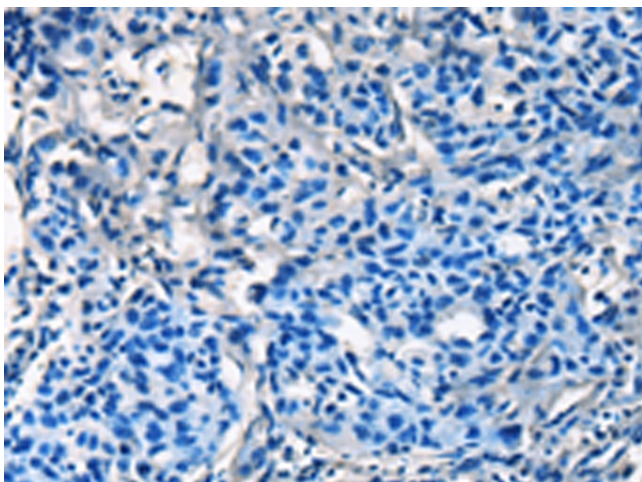
|                       |  |
|-----------------------|--|
| Product Type:         | Primary Antibodies   |
| Applications:         | IHC  |
| Recommended Dilution: | IHC: 50-200<br>Positive control: Human lung cancer<br>Predicted cell location: Cytoplasm   |
| Reactivity:           | Human, Mouse   |
| Host:                 | Rabbit   |
| Isotype:              | IgG  |
| Clonality:            | Polyclonal   |
| Immunogen:            | Fusion protein of human MYH1   |
| Formulation:          | pH7.4 PBS, 0.05% NaN3, 40% Glycerol  |
| Concentration:        | lot specific   |
| Purification:         | Antigen affinity purification  |
| Conjugation:          | Unconjugated   |
| Storage:              | Store at -20°C as received.  |
| Stability:            | Stable for 12 months from date of receipt.   |
| Gene Name:            | myosin, heavy chain 1, skeletal muscle, adult  |
| Database Link:        | <a href="#">NP_005954</a><br><a href="#">Entrez Gene 17879 Mouse</a> <a href="#">Entrez Gene 4619 Human</a><br><a href="#">P12882</a>  |
| Background:           | Myosin is a major contractile protein which converts chemical energy into mechanical energy through the hydrolysis of ATP. Myosin is a hexameric protein composed of a pair of myosin heavy chains (MYH) and two pairs of nonidentical light chains. Myosin heavy chains are encoded by a multigene family. In mammals at least 10 different myosin heavy chain (MYH) isoforms have been described from striated, smooth, and nonmuscle cells. These isoforms show expression that is spatially and temporally regulated during development. |
| Synonyms:             | D; HEL71; MYHa; MyHC-2X; MyHC-2x; MYHSA1   |
| Protein Pathways:     | Tight junction, Viral myocarditis  |



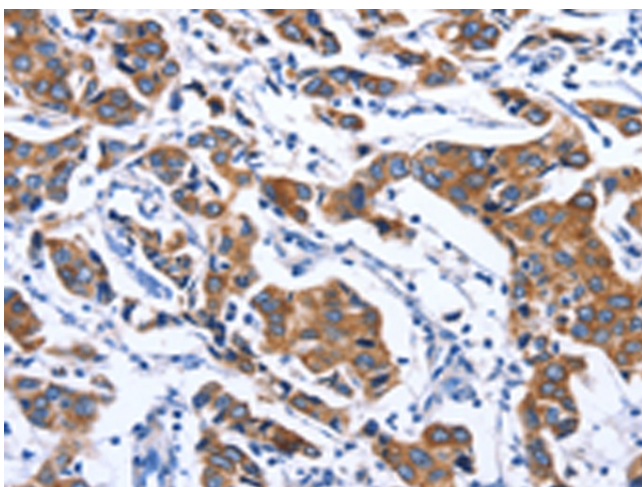
[View online »](#)

**Product images:**

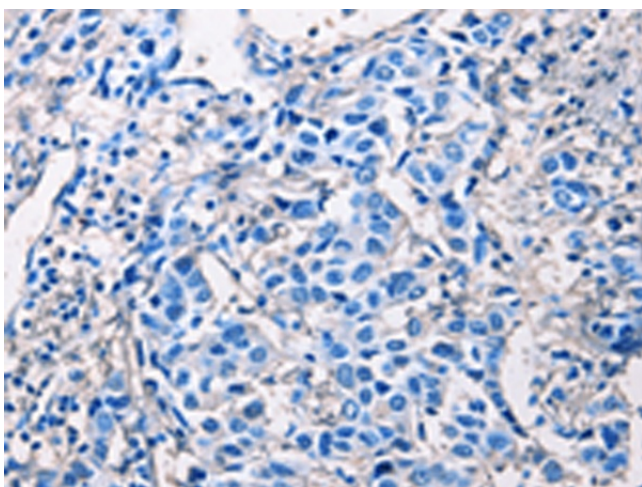
Immunohistochemistry of paraffin-embedded Human lung cancer tissue using TA349408 (MYH1 Antibody) at dilution 1/40 (Original magnification: ×200)



Immunohistochemistry of paraffin-embedded Human lung cancer tissue using TA349408 (MYH1 Antibody) at dilution 1/40, treated with fusion protein. (Original magnification: ×200)



Immunohistochemistry of paraffin-embedded Human breast cancer tissue using TA349408 (MYH1 Antibody) at dilution 1/40 (Original magnification: ×200)



Immunohistochemistry of paraffin-embedded Human breast cancer tissue using TA349408 (MYH1 Antibody) at dilution 1/40, treated with fusion protein. (Original magnification: ×200)