

Product datasheet for **TA349407**

Myosin Light Chain 2 (MYL2) Rabbit Polyclonal Antibody

Product data:

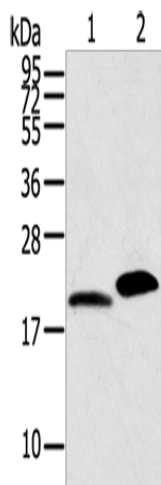
Product Type:	Primary Antibodies
Applications:	WB
Recommended Dilution:	WB: 500-2000 WB positive control: Mouse skin and heart tissue
Reactivity:	Human, Mouse, Rat
Host:	Rabbit
Isotype:	IgG
Clonality:	Polyclonal
Immunogen:	Fusion protein of human MYL2
Formulation:	pH7.4 PBS, 0.05% NaN ₃ , 40% Glycerol
Concentration:	lot specific
Purification:	Antigen affinity purification
Conjugation:	Unconjugated
Storage:	Store at -20°C as received.
Stability:	Stable for 12 months from date of receipt.
Predicted Protein Size:	19 kDa
Gene Name:	myosin light chain 2
Database Link:	NP_000423 Entrez Gene 17906 Mouse Entrez Gene 363925 Rat Entrez Gene 4633 Human P10916
Background:	Thus gene encodes the regulatory light chain associated with cardiac myosin beta (or slow) heavy chain. Ca ⁺ triggers the phosphorylation of regulatory light chain that in turn triggers contraction. Mutations in this gene are associated with mid-left ventricular chamber type hypertrophic cardiomyopathy.
Synonyms:	CMH10; MLC-2s; MLC2; v



[View online »](#)

Protein Pathways:

Cardiac muscle contraction, Dilated cardiomyopathy, Focal adhesion, Hypertrophic cardiomyopathy (HCM), Leukocyte transendothelial migration, Regulation of actin cytoskeleton, Tight junction

Product images:

Gel: 12%SDS-PAGE

Lysate: 40 µg

Lane 1-2: Mouse skin tissue

Mouse heart tissue

Primary antibody: TA349407 (MYL2 Antibody) at dilution 1/800

Secondary antibody: Goat anti rabbit IgG at 1/8000 dilution

Exposure time: 30 seconds