

Product datasheet for **TA349405**

MLH1 Rabbit Polyclonal Antibody

Product data:

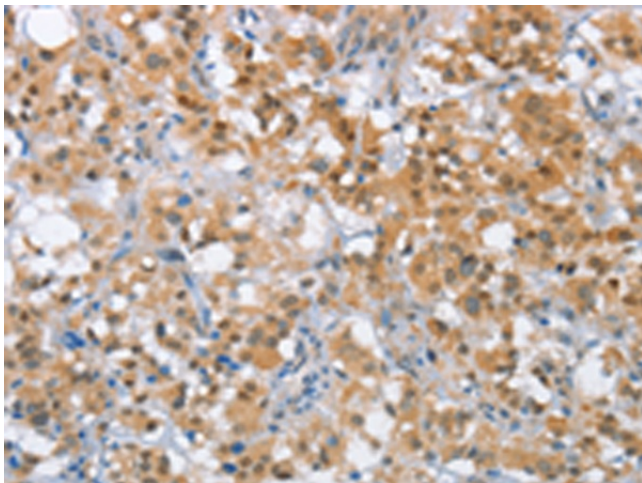
Product Type:	Primary Antibodies
Applications:	IHC
Recommended Dilution:	IHC: 50-200 Positive control: Human thyroid cancer Predicted cell location: Nucleus and Cytoplasm
Reactivity:	Human, Mouse, Rat
Host:	Rabbit
Isotype:	IgG
Clonality:	Polyclonal
Immunogen:	Fusion protein of human MLH1
Formulation:	pH7.4 PBS, 0.05% NaN ₃ , 40% Glycerol
Concentration:	lot specific
Purification:	Antigen affinity purification
Conjugation:	Unconjugated
Storage:	Store at -20°C as received.
Stability:	Stable for 12 months from date of receipt.
Gene Name:	mutL homolog 1
Database Link:	NP_000240 Entrez Gene 17350 Mouse Entrez Gene 81685 Rat Entrez Gene 4292 Human P40692
Background:	This gene was identified as a locus frequently mutated in hereditary nonpolyposis colon cancer (HNPCC). It is a human homolog of the E. coli DNA mismatch repair gene mutL, consistent with the characteristic alterations in microsatellite sequences (RER+phenotype) found in HNPCC. Alternative splicing results in multiple transcript variants encoding distinct isoforms. Additional transcript variants have been described, but their full-length natures have not been determined.
Synonyms:	COCA2; FCC2; hMLH1; HNPCC; HNPCC2
Protein Families:	Druggable Genome



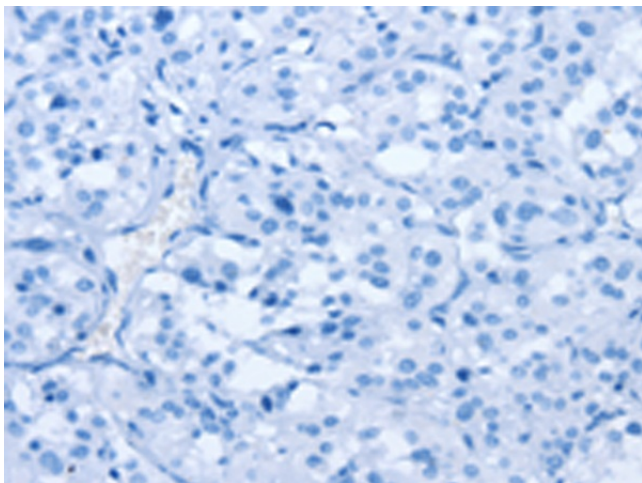
[View online »](#)

Protein Pathways: Colorectal cancer, Endometrial cancer, Mismatch repair, Pathways in cancer

Product images:



Immunohistochemistry of paraffin-embedded Human thyroid cancer tissue using TA349405 (MLH1 Antibody) at dilution 1/65 (Original magnification: x200)



Immunohistochemistry of paraffin-embedded Human thyroid cancer tissue using TA349405 (MLH1 Antibody) at dilution 1/65, treated with fusion protein. (Original magnification: x200)