

Product datasheet for **TA349400S**

MMP14 Rabbit Polyclonal Antibody

Product data:

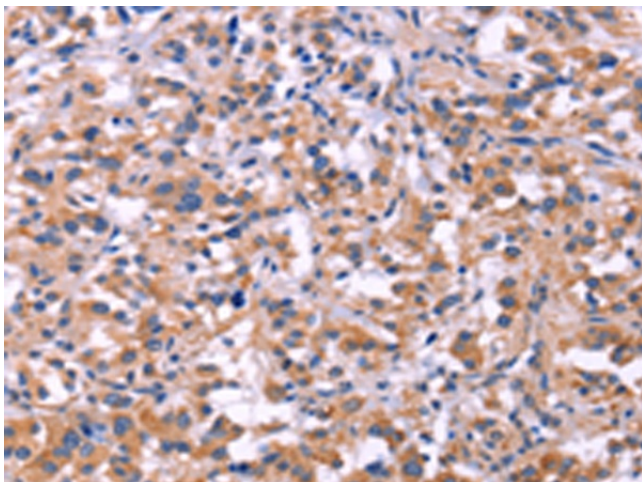
| | |
|-----------------------|---|
| Product Type: | Primary Antibodies |
| Applications: | IHC |
| Recommended Dilution: | IHC: 50-200 Positive control: Human thyroid cancer Predicted cell location: Cytoplasm |
| Reactivity: | Human, Mouse, Rat |
| Host: | Rabbit |
| Isotype: | IgG |
| Clonality: | Polyclonal |
| Immunogen: | Fusion protein of human MMP14 |
| Formulation: | pH7.4 PBS, 0.05% NaN ₃ , 40% GlycerolIn |
| Purification: | Antigen affinity purification |
| Conjugation: | Unconjugated |
| Storage: | Store at -20°C as received. |
| Stability: | Stable for 12 months from date of receipt. |
| Gene Name: | matrix metalloproteinase 14 |
| Database Link: | NP_004986 Entrez Gene 17387 Mouse Entrez Gene 81707 Rat Entrez Gene 4323 Human P50281 |

Background: Proteins of the matrix metalloproteinase (MMP) family are involved in the breakdown of extracellular matrix in normal physiological processes, such as embryonic development, reproduction, and tissue remodeling, as well as in disease processes, such as arthritis and metastasis. Most MMP's are secreted as inactive proproteins which are activated when cleaved by extracellular proteinases. However, the protein encoded by this gene is a member of the membrane-type MMP (MT-MMP) subfamily; each member of this subfamily contains a potential transmembrane domain suggesting that these proteins are expressed at the cell surface rather than secreted. This protein activates MMP2 protein, and this activity may be involved in tumor invasion.

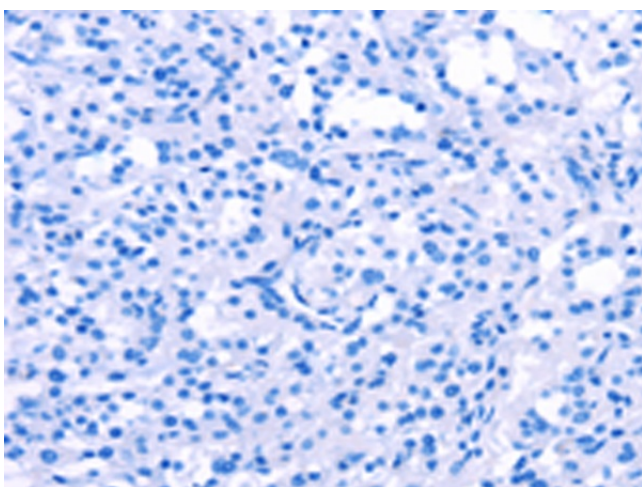


[View online »](#)

Synonyms: MMP-14; MMP-X1; MT-MMP; MT-MMP 1; MT1-MMP; MT1MMP; MTMMP1; WNCHRS
Protein Families: Druggable Genome, Protease, Transmembrane
Protein Pathways: GnRH signaling pathway

Product images:

Immunohistochemistry of paraffin-embedded Human thyroid cancer tissue using [TA349400] (MMP14 Antibody) at dilution 1/40 (Original magnification: $\times 200$)



Immunohistochemistry of paraffin-embedded Human thyroid cancer tissue using [TA349400] (MMP14 Antibody) at dilution 1/40, treated with fusion protein. (Original magnification: $\times 200$)