

## Product datasheet for **TA349398S**

### MYLK2 Rabbit Polyclonal Antibody

#### Product data:

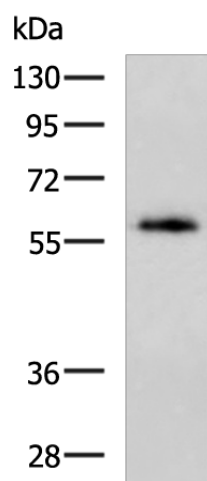
Product Type:	Primary Antibodies
Applications:	WB
Recommended Dilution:	WB: 500-2000 WB positive control: Mouse fat tissue lysate
Reactivity:	Human, Mouse, Rat
Host:	Rabbit
Isotype:	IgG
Clonality:	Polyclonal
Immunogen:	Fusion protein of human MYLK2
Formulation:	pH7.4 PBS, 0.05% NaN <sub>3</sub> , 40% Glycerol
Purification:	Antigen affinity purification
Conjugation:	Unconjugated
Storage:	Store at -20°C as received.
Stability:	Stable for 12 months from date of receipt.
Predicted Protein Size:	65 kDa
Gene Name:	myosin light chain kinase 2
Database Link:	<a href="#">NP_149109</a> <a href="#">Entrez Gene 85366 Human Q9H1R3</a>
Background:	This gene encodes a myosin light chain kinase, a calcium / calmodulin dependent enzyme, that is exclusively expressed in adult skeletal muscle. The MYLK2 gene expresses skMLCK more prevalently in fast twitch muscle fibers as compared to slow twitch muscle fibers. Calmodulin is composed of two terminal domains (N,C) each containing two E-F hand motifs that bind to Ca <sup>2+</sup> . Upon saturation of Ca <sup>2+</sup> , Calmodulin undergoes a conformation change allowing it to bind with a target protein such as skMLCK.
Synonyms:	KMLC; MLCK; MLCK2; skMLCK
Protein Families:	Druggable Genome, Protein Kinase



[View online »](#)

**Protein Pathways:** Calcium signaling pathway, Focal adhesion, Regulation of actin cytoskeleton, Vascular smooth muscle contraction

**Product images:**



Gel: 8%SDS-PAGE  
Lysate: 40  $\mu$ g  
Lane: Mouse fat tissue lysate  
Primary antibody: [TA349398] (MYLK2 Antibody)  
at dilution 1/800  
Secondary antibody: Goat anti rabbit IgG at  
1/5000 dilution  
Exposure time: 1 minute