

## Product datasheet for **TA349397**

### 67kDa Laminin Receptor (RPSA) Rabbit Polyclonal Antibody

#### Product data:

Product Type:	Primary Antibodies
Applications:	IHC, WB
Recommended Dilution:	WB: 500-2000 WB positive control: A549, NIH/3T3 and 293T cells, human hepatocellular carcinoma tissue and hela cells IHC: 100-300 Positive control: Human thyroid cancer Predicted cell location: Cytoplasm or Nucleus
Reactivity:	Human, Mouse, Rat
Host:	Rabbit
Isotype:	IgG
Clonality:	Polyclonal
Immunogen:	Fusion protein of human RPSA
Formulation:	pH7.4 PBS, 0.05% NaN <sub>3</sub> , 40% Glycerol
Concentration:	lot specific
Purification:	Antigen affinity purification
Conjugation:	Unconjugated
Storage:	Store at -20°C as received.
Stability:	Stable for 12 months from date of receipt.
Predicted Protein Size:	33 kDa
Gene Name:	ribosomal protein SA
Database Link:	<a href="#">NP_002286</a> <a href="#">Entrez Gene 16785 Mouse</a> <a href="#">Entrez Gene 29236 Rat</a> <a href="#">Entrez Gene 3921 Human</a> <a href="#">P08865</a>



[View online »](#)

**Background:**

Laminins, a family of extracellular matrix glycoproteins, are the major noncollagenous constituent of basement membranes. They have been implicated in a wide variety of biological processes including cell adhesion, differentiation, migration, signaling, neurite outgrowth and metastasis. Many of the effects of laminin are mediated through interactions with cell surface receptors. These receptors include members of the integrin family, as well as non-integrin laminin-binding proteins. This gene encodes a high-affinity, non-integrin family, laminin receptor 1. This receptor has been variously called 67 kD laminin receptor, 37 kD laminin receptor precursor (37LRP) and p40 ribosome-associated protein. The amino acid sequence of laminin receptor 1 is highly conserved through evolution, suggesting a key biological function. It has been observed that the level of the laminin receptor transcript is higher in colon carcinoma tissue and lung cancer cell line than their normal counterparts. Also, there is a correlation between the upregulation of this polypeptide in cancer cells and their invasive and metastatic phenotype. Multiple copies of this gene exist, however, most of them are pseudogenes thought to have arisen from retropositional events. Two alternatively spliced transcript variants encoding the same protein have been found for this gene

**Synonyms:**

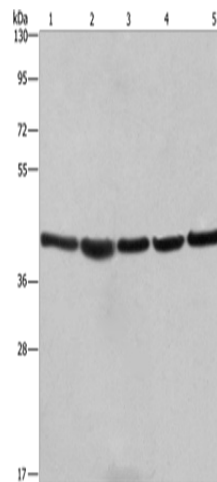
1CHD4; 37LRP; 67LR; ICAS; LAMBR; lamR; LAMR1; LBP; LR; LRP; NEM; p40; SA

**Protein Families:**

Druggable Genome

**Protein Pathways:**

Ribosome

**Product images:**

Gel: 10%SDS-PAGE

Lysate: 40 µg

Lane 1-5: A549 cells

NIH/3T3 cells

293T cells

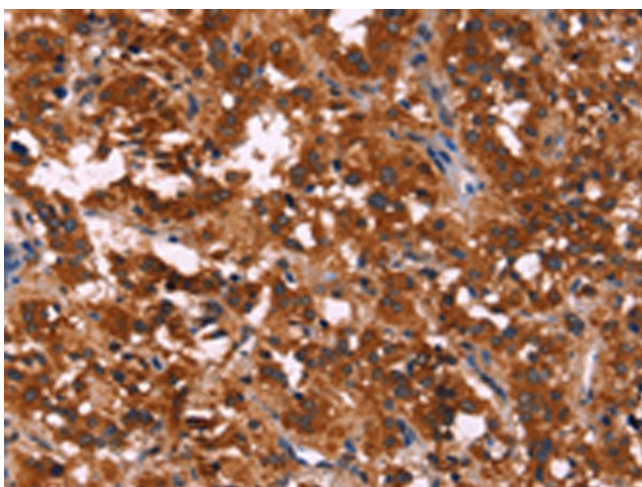
human hepatocellular carcinoma tissue

hela cells

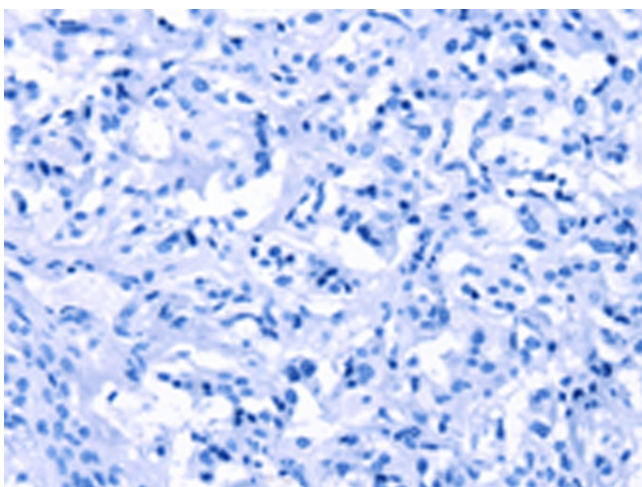
Primary antibody: TA349397 (RPSA Antibody) at dilution 1/433.3

Secondary antibody: Goat anti rabbit IgG at 1/8000 dilution

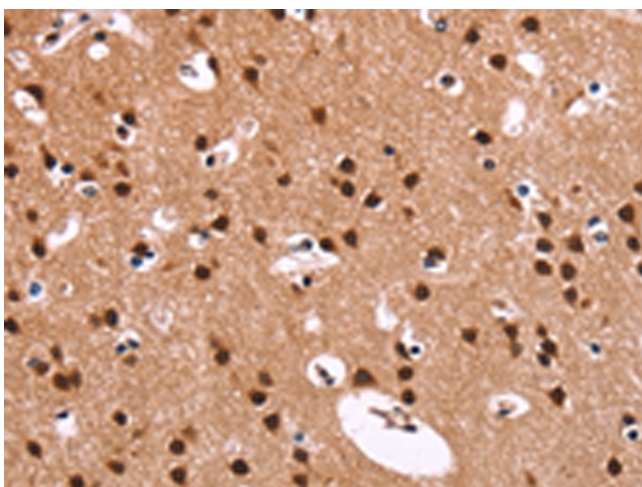
Exposure time: 15 seconds



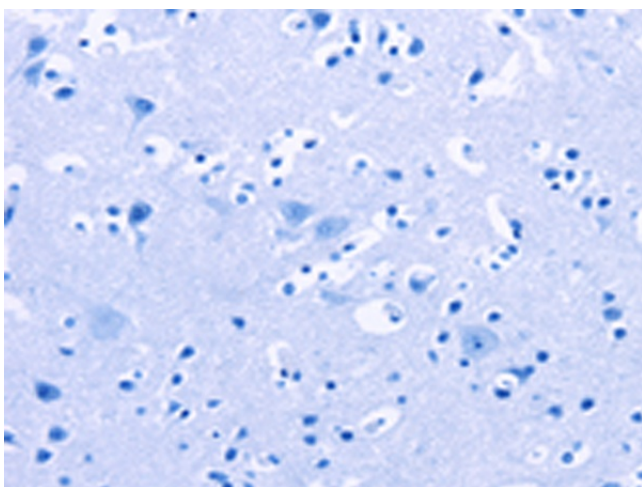
Immunohistochemistry of paraffin-embedded Human thyroid cancer tissue using TA349397 (RPSA Antibody) at dilution 1/60 (Original magnification:  $\times 200$ )



Immunohistochemistry of paraffin-embedded Human thyroid cancer tissue using TA349397 (RPSA Antibody) at dilution 1/60, treated with fusion protein. (Original magnification:  $\times 200$ )



Immunohistochemistry of paraffin-embedded Human brain tissue using TA349397 (RPSA Antibody) at dilution 1/60 (Original magnification:  $\times 200$ )



Immunohistochemistry of paraffin-embedded Human brain tissue using TA349397 (RPSA Antibody) at dilution 1/60, treated with fusion protein. (Original magnification:  $\times 200$ )