

## Product datasheet for **TA349392S**

### MCM5 Rabbit Polyclonal Antibody

#### Product data:

Product Type:	Primary Antibodies
Applications:	IHC, WB
Recommended Dilution:	WB: 500-2000 WB positive control: HepG2, K562, Jurkat, 231 and hela cells IHC: 50-200 Positive control: Human gastric cancer Predicted cell location: Nucleus
Reactivity:	Human, Mouse
Host:	Rabbit
Isotype:	IgG
Clonality:	Polyclonal
Immunogen:	Fusion protein of human MCM5
Formulation:	pH7.4 PBS, 0.05% NaN <sub>3</sub> , 40% Glycerol
Purification:	Antigen affinity purification
Conjugation:	Unconjugated
Storage:	Store at -20°C as received.
Stability:	Stable for 12 months from date of receipt.
Predicted Protein Size:	82 kDa
Gene Name:	minichromosome maintenance complex component 5
Database Link:	<a href="#">NP_006730</a> <a href="#">Entrez Gene 17218 Mouse</a> <a href="#">Entrez Gene 4174 Human</a> <a href="#">P33992</a>
Background:	The protein encoded by this gene is structurally very similar to the CDC46 protein from <i>S. cerevisiae</i> , a protein involved in the initiation of DNA replication. The encoded protein is a member of the MCM family of chromatin-binding proteins and can interact with at least two other members of this family. The encoded protein is upregulated in the transition from the G0 to G1/S phase of the cell cycle and may actively participate in cell cycle regulation.
Synonyms:	CDC46; P1-CDC46

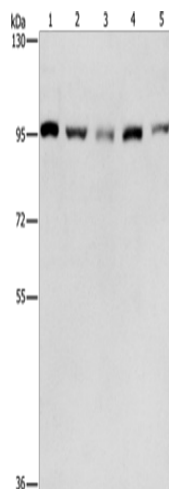


[View online »](#)

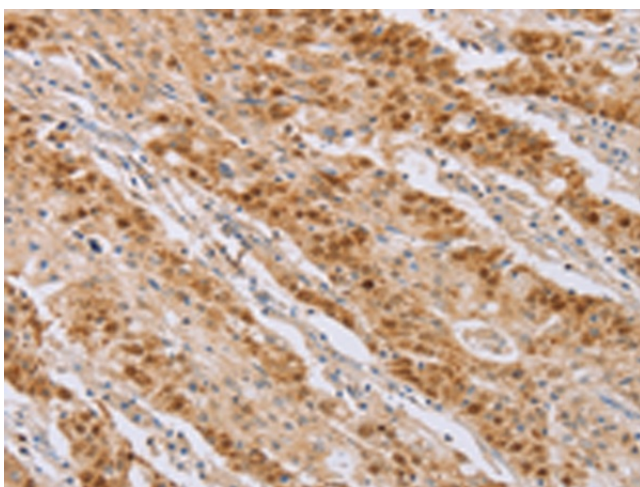
**Protein Families:** Stem cell - Pluripotency, Transcription Factors

**Protein Pathways:** Cell cycle, DNA replication

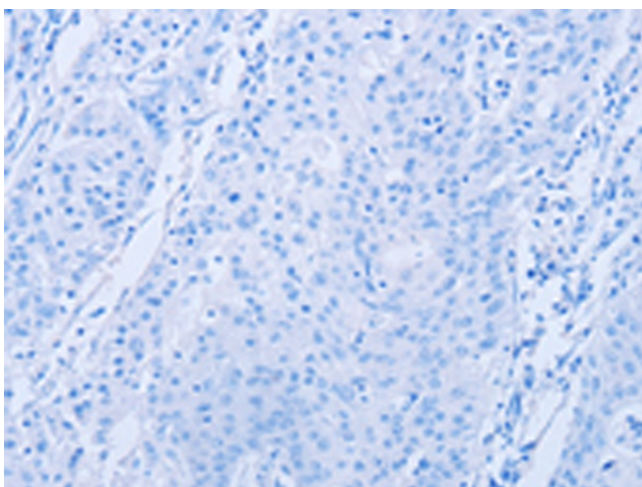
**Product images:**



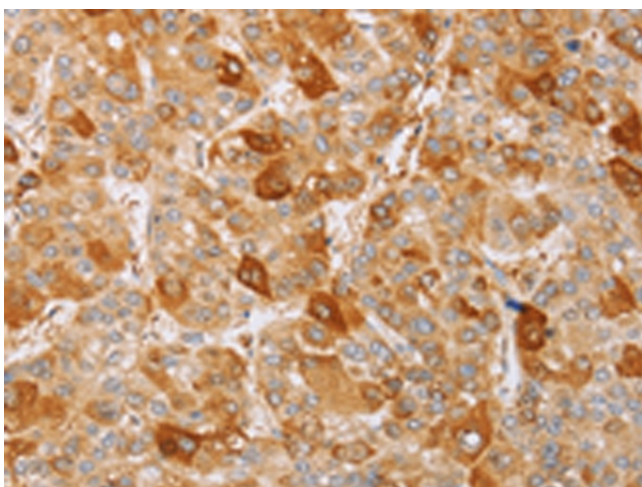
Gel: 6%SDS-PAGE  
Lysate: 40 µg  
Lane 1-5: HepG2 cells  
K562 cells  
Jurkat cells  
231 cells  
hela cells  
Primary antibody: [TA349392] (MCM5 Antibody)  
at dilution 1/475  
Secondary antibody: Goat anti rabbit IgG at  
1/8000 dilution  
Exposure time: 30 seconds



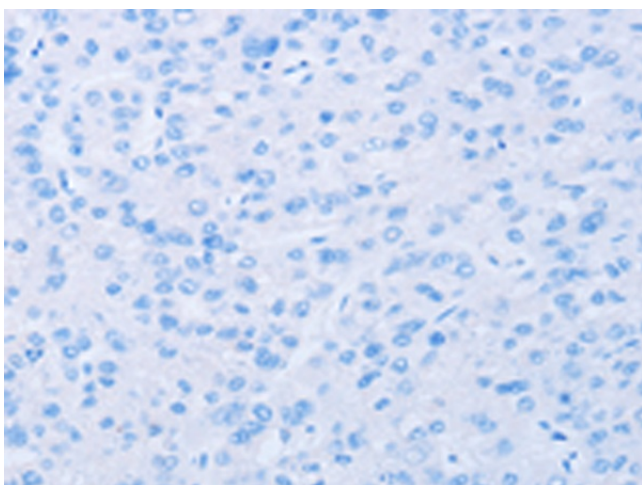
Immunohistochemistry of paraffin-embedded  
Human gastric cancer tissue using [TA349392]  
(MCM5 Antibody) at dilution 1/40 (Original  
magnification: ×200)



Immunohistochemistry of paraffin-embedded Human gastric cancer tissue using [TA349392] (MCM5 Antibody) at dilution 1/40, treated with fusion protein. (Original magnification:  $\times 200$ )



Immunohistochemistry of paraffin-embedded Human liver cancer tissue using [TA349392] (MCM5 Antibody) at dilution 1/40 (Original magnification:  $\times 200$ )



Immunohistochemistry of paraffin-embedded Human liver cancer tissue using [TA349392] (MCM5 Antibody) at dilution 1/40, treated with fusion protein. (Original magnification:  $\times 200$ )