

Product datasheet for **TA349392**

MCM5 Rabbit Polyclonal Antibody

Product data:

Product Type:	Primary Antibodies
Applications:	IHC, WB
Recommended Dilution:	WB: 500-2000 WB positive control: HepG2, K562, Jurkat, 231 and hela cells IHC: 50-200 Positive control: Human gastric cancer Predicted cell location: Nucleus
Reactivity:	Human, Mouse
Host:	Rabbit
Isotype:	IgG
Clonality:	Polyclonal
Immunogen:	Fusion protein of human MCM5
Formulation:	pH7.4 PBS, 0.05% NaN ₃ , 40% Glycerol
Concentration:	lot specific
Purification:	Antigen affinity purification
Conjugation:	Unconjugated
Storage:	Store at -20°C as received.
Stability:	Stable for 12 months from date of receipt.
Predicted Protein Size:	82 kDa
Gene Name:	minichromosome maintenance complex component 5
Database Link:	NP_006730 Entrez Gene 17218 Mouse Entrez Gene 4174 Human P33992

Background: The protein encoded by this gene is structurally very similar to the CDC46 protein from *S. cerevisiae*, a protein involved in the initiation of DNA replication. The encoded protein is a member of the MCM family of chromatin-binding proteins and can interact with at least two other members of this family. The encoded protein is upregulated in the transition from the G0 to G1/S phase of the cell cycle and may actively participate in cell cycle regulation.



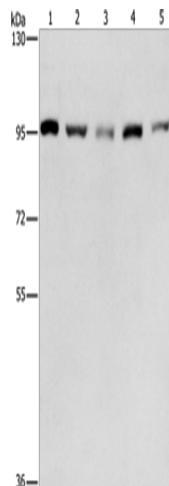
[View online »](#)

Synonyms: CDC46; P1-CDC46

Protein Families: Stem cell - Pluripotency, Transcription Factors

Protein Pathways: Cell cycle, DNA replication

Product images:



Gel: 6%SDS-PAGE

Lysate: 40 µg

Lane 1-5: HepG2 cells

K562 cells

Jurkat cells

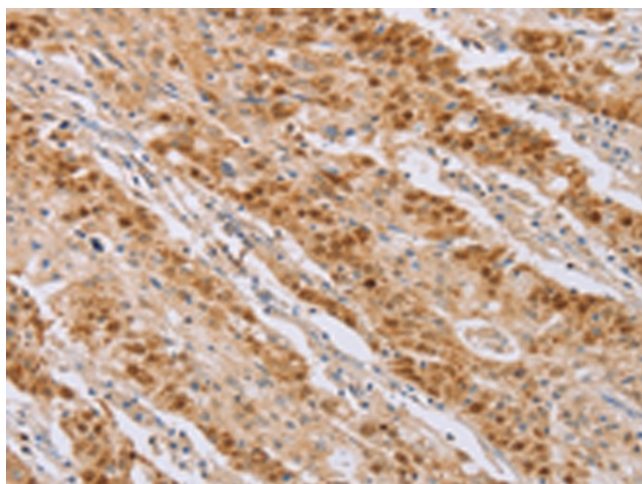
231 cells

hela cells

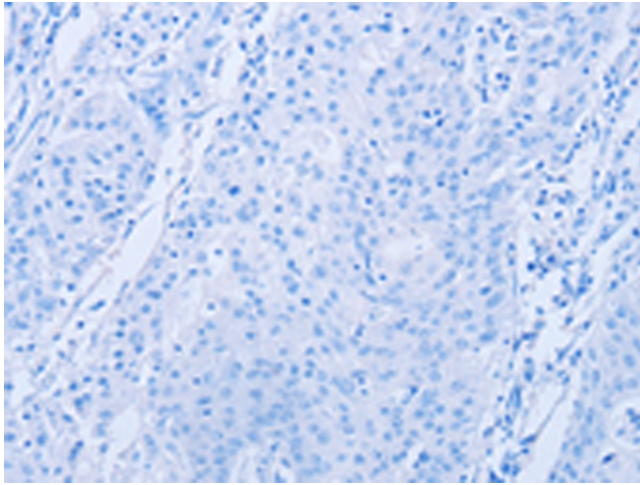
Primary antibody: TA349392 (MCM5 Antibody) at dilution 1/475

Secondary antibody: Goat anti rabbit IgG at 1/8000 dilution

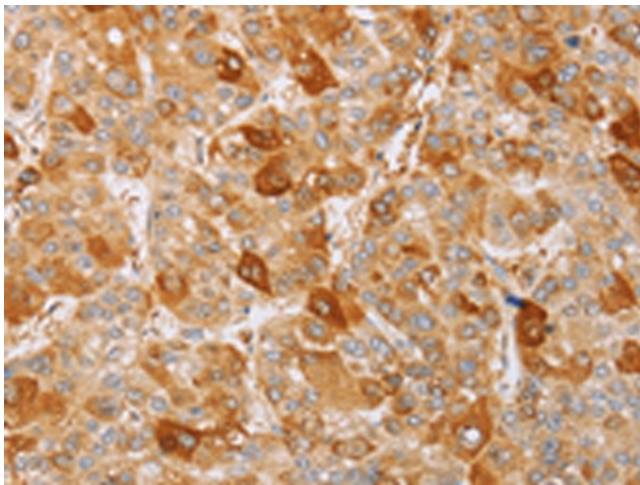
Exposure time: 30 seconds



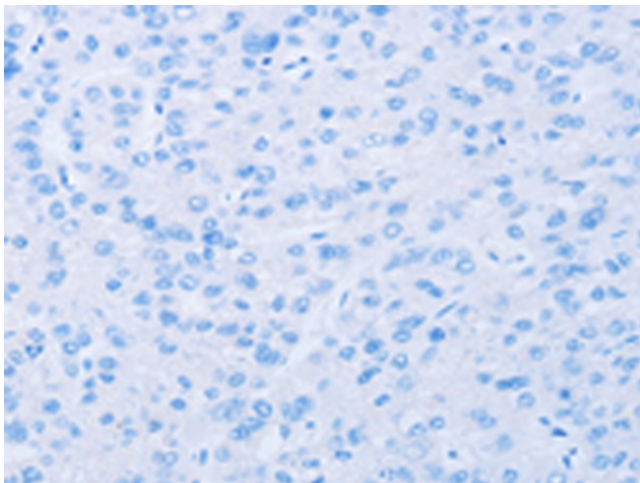
Immunohistochemistry of paraffin-embedded Human gastric cancer tissue using TA349392 (MCM5 Antibody) at dilution 1/40 (Original magnification: x200)



Immunohistochemistry of paraffin-embedded Human gastric cancer tissue using TA349392 (MCM5 Antibody) at dilution 1/40, treated with fusion protein. (Original magnification: ×200)



Immunohistochemistry of paraffin-embedded Human liver cancer tissue using TA349392 (MCM5 Antibody) at dilution 1/40 (Original magnification: ×200)



Immunohistochemistry of paraffin-embedded Human liver cancer tissue using TA349392 (MCM5 Antibody) at dilution 1/40, treated with fusion protein. (Original magnification: ×200)