

## Product datasheet for **TA349390S**

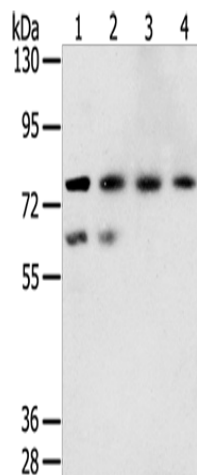
### **TMPRSS7 Rabbit Polyclonal Antibody**

#### **Product data:**

Product Type:	Primary Antibodies
Applications:	WB
Recommended Dilution:	WB: 200-1000 WB positive control: A549, hepg2, lovo and A431 cells
Reactivity:	Human, Mouse, Rat
Host:	Rabbit
Isotype:	IgG
Clonality:	Polyclonal
Immunogen:	Fusion protein of human TMPRSS7
Formulation:	pH7.4 PBS, 0.05% NaN <sub>3</sub> , 40% Glycerol
Purification:	Antigen affinity purification
Conjugation:	Unconjugated
Storage:	Store at -20°C as received.
Stability:	Stable for 12 months from date of receipt.
Predicted Protein Size:	94 kDa
Gene Name:	transmembrane protease, serine 7
Database Link:	<a href="#">NP_001036040</a> <a href="#">Entrez Gene 208171 Mouse</a> <a href="#">Entrez Gene 288118 Rat</a> <a href="#">Entrez Gene 344805 Human</a> <a href="#">Q7RTY8</a>
Background:	Serine protease which preferentially hydrolyzes peptides with Arg at the P1 position. Expressed in brain, ovary, testis, salivary gland, trachea and lung.
Synonyms:	B230219I23Rik; Gm1748; matriptase-3; transmembrane serine protease 7
Protein Families:	Druggable Genome



[View online »](#)

**Product images:**


Gel: 6%SDS-PAGE  
 Lysate: 40 µg  
 Lane 1-4: A549 cells  
 hepg2 cells  
 lovo cells  
 A431 cells  
 Primary antibody: [TA349390] (TMPRSS7  
 Antibody) at dilution 1/250  
 Secondary antibody: Goat anti rabbit IgG at  
 1/8000 dilution  
 Exposure time: 5 minutes