

Product datasheet for **TA349390**

TMPRSS7 Rabbit Polyclonal Antibody

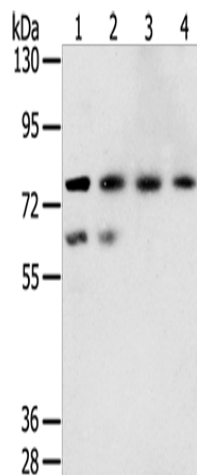
Product data:

Product Type:	Primary Antibodies
Applications:	WB
Recommended Dilution:	WB: 200-1000 WB positive control: A549, hepg2, lovo and A431 cells
Reactivity:	Human, Mouse, Rat
Host:	Rabbit
Isotype:	IgG
Clonality:	Polyclonal
Immunogen:	Fusion protein of human TMPRSS7
Formulation:	pH7.4 PBS, 0.05% NaN ₃ , 40% Glycerol
Concentration:	lot specific
Purification:	Antigen affinity purification
Conjugation:	Unconjugated
Storage:	Store at -20°C as received.
Stability:	Stable for 12 months from date of receipt.
Predicted Protein Size:	94 kDa
Gene Name:	transmembrane protease, serine 7
Database Link:	NP_001036040 Entrez Gene 208171 MouseEntrez Gene 288118 RatEntrez Gene 344805 Human Q7RTY8
Background:	Serine protease which preferentially hydrolyzes peptides with Arg at the P1 position. Expressed in brain, ovary, testis, salivary gland, trachea and lung.
Synonyms:	B230219I23Rik; Gm1748; matriptase-3; transmembrane serine protease 7
Protein Families:	Druggable Genome



[View online »](#)

Product images:



Gel: 6%SDS-PAGE
Lysate: 40 μ g
Lane 1-4: A549 cells
hepg2 cells
lovo cells
A431 cells
Primary antibody: TA349390 (TMPRSS7 Antibody)
at dilution 1/250
Secondary antibody: Goat anti rabbit IgG at
1/8000 dilution
Exposure time: 5 minutes