

Product datasheet for **TA349387S**

MAG Rabbit Polyclonal Antibody

Product data:

Product Type:	Primary Antibodies
Applications:	IHC, WB
Recommended Dilution:	WB: 500-2000 WB positive control: Mouse brain tissue IHC: 25-100 Positive control: Human brain Predicted cell location: Cytoplasm
Reactivity:	Human, Mouse, Rat
Host:	Rabbit
Isotype:	IgG
Clonality:	Polyclonal
Immunogen:	Fusion protein of human MAG
Formulation:	pH7.4 PBS, 0.05% NaN ₃ , 40% Glycerol
Purification:	Antigen affinity purification
Conjugation:	Unconjugated
Storage:	Store at -20°C as received.
Stability:	Stable for 12 months from date of receipt.
Predicted Protein Size:	69 kDa
Gene Name:	myelin associated glycoprotein
Database Link:	NP_542167 Entrez Gene 17136 Mouse Entrez Gene 29409 Rat Entrez Gene 4099 Human P20916
Background:	The protein encoded by this gene is a type I membrane protein and member of the immunoglobulin superfamily. It is thought to be involved in the process of myelination. It is a lectin that binds to sialylated glycoconjugates and mediates certain myelin-neuron cell-cell interactions. Three alternatively spliced transcripts encoding different isoforms have been described for this gene.
Synonyms:	GMA; S-MAG; SIGLEC-4A; SIGLEC4A

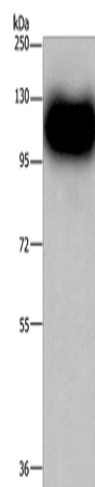


[View online »](#)

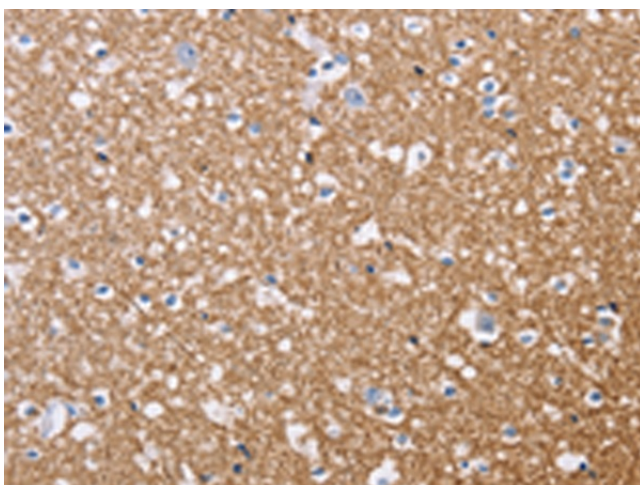
Protein Families: Druggable Genome, Transmembrane

Protein Pathways: Cell adhesion molecules (CAMs)

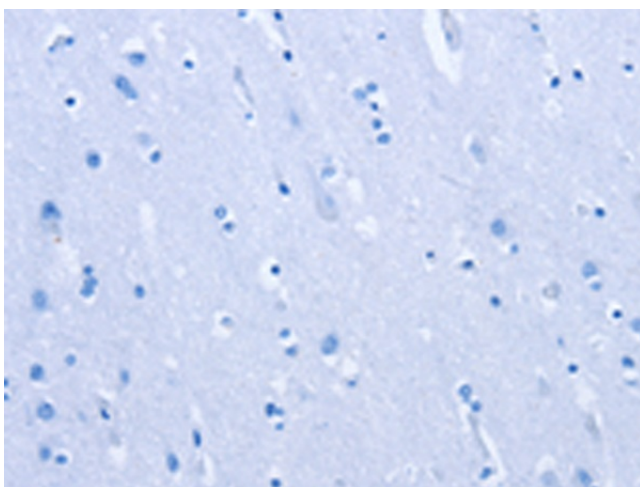
Product images:



Gel: 8%SDS-PAGE
Lysate: 40 μ g
Lane: Mouse brain tissue
Primary antibody: [TA349387] (MAG Antibody) at dilution 1/450
Secondary antibody: Goat anti rabbit IgG at 1/8000 dilution
Exposure time: 2 seconds



Immunohistochemistry of paraffin-embedded Human brain tissue using [TA349387] (MAG Antibody) at dilution 1/20 (Original magnification: \times 200)



Immunohistochemistry of paraffin-embedded Human brain tissue using [TA349387] (MAG Antibody) at dilution 1/20, treated with fusion protein. (Original magnification: $\times 200$)