

## Product datasheet for **TA349387**

### MAG Rabbit Polyclonal Antibody

#### Product data:

Product Type:	Primary Antibodies
Applications:	IHC, WB
Recommended Dilution:	WB: 500-2000 WB positive control: Mouse brain tissue IHC: 25-100 Positive control: Human brain Predicted cell location: Cytoplasm
Reactivity:	Human, Mouse, Rat
Host:	Rabbit
Isotype:	IgG
Clonality:	Polyclonal
Immunogen:	Fusion protein of human MAG
Formulation:	pH7.4 PBS, 0.05% NaN <sub>3</sub> , 40% Glycerol
Concentration:	lot specific
Purification:	Antigen affinity purification
Conjugation:	Unconjugated
Storage:	Store at -20°C as received.
Stability:	Stable for 12 months from date of receipt.
Predicted Protein Size:	69 kDa
Gene Name:	myelin associated glycoprotein
Database Link:	<a href="#">NP_542167</a> <a href="#">Entrez Gene 17136 Mouse</a> <a href="#">Entrez Gene 29409 Rat</a> <a href="#">Entrez Gene 4099 Human</a> <a href="#">P20916</a>

**Background:** The protein encoded by this gene is a type I membrane protein and member of the immunoglobulin superfamily. It is thought to be involved in the process of myelination. It is a lectin that binds to sialylated glycoconjugates and mediates certain myelin-neuron cell-cell interactions. Three alternatively spliced transcripts encoding different isoforms have been described for this gene.



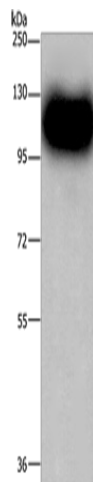
[View online »](#)

**Synonyms:** GMA; S-MAG; SIGLEC-4A; SIGLEC4A

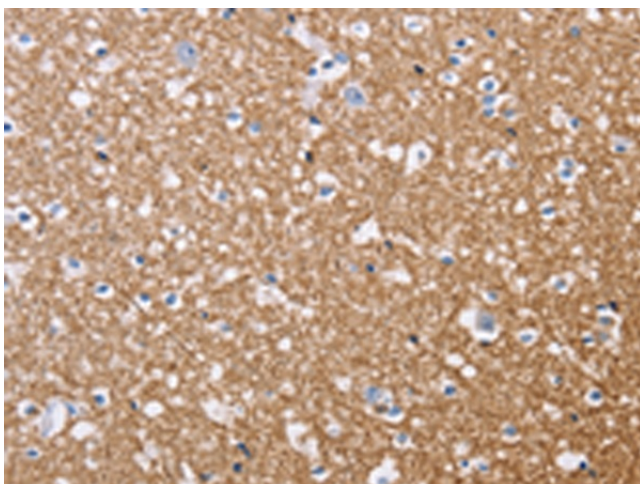
**Protein Families:** Druggable Genome, Transmembrane

**Protein Pathways:** Cell adhesion molecules (CAMs)

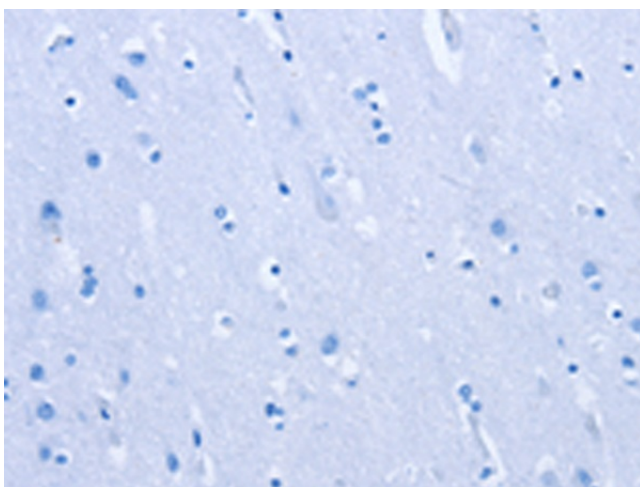
**Product images:**



Gel: 8%SDS-PAGE  
Lysate: 40  $\mu$ g  
Lane: Mouse brain tissue  
Primary antibody: TA349387 (MAG Antibody) at dilution 1/450  
Secondary antibody: Goat anti rabbit IgG at 1/8000 dilution  
Exposure time: 2 seconds



Immunohistochemistry of paraffin-embedded Human brain tissue using TA349387 (MAG Antibody) at dilution 1/20 (Original magnification:  $\times 200$ )



Immunohistochemistry of paraffin-embedded Human brain tissue using TA349387 (MAG Antibody) at dilution 1/20, treated with fusion protein. (Original magnification:  $\times 200$ )