

## Product datasheet for **TA349386**

### **MAD2L1 binding protein (MAD2L1BP) Rabbit Polyclonal Antibody**

#### **Product data:**

Product Type:	Primary Antibodies
Applications:	IHC, WB
Recommended Dilution:	WB: 500-2000 WB positive control: A549, 231, PC3 and hela cells IHC: 50-200 Positive control: Human cervical cancer Predicted cell location: Cytoplasm or Nucleus
Reactivity:	Human
Host:	Rabbit
Isotype:	IgG
Clonality:	Polyclonal
Immunogen:	Fusion protein of human MAD2L1BP
Formulation:	pH7.4 PBS, 0.05% NaN <sub>3</sub> , 40% Glycerol
Concentration:	lot specific
Purification:	Antigen affinity purification
Conjugation:	Unconjugated
Storage:	Store at -20°C as received.
Stability:	Stable for 12 months from date of receipt.
Predicted Protein Size:	31 kDa
Gene Name:	MAD2L1 binding protein
Database Link:	<a href="#">NP_001003690</a> <a href="#">Entrez Gene 9587 Human</a> <a href="#">Q15013</a>



[View online »](#)

**Background:**

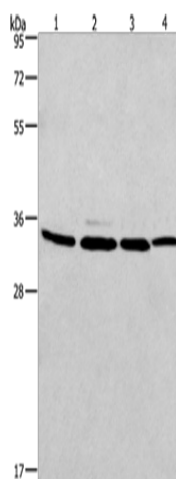
The protein encoded by this gene was identified as a binding protein of the MAD2 mitotic arrest deficient-like 1 (MAD2/MAD2L1). MAD2 is a key component of the spindle checkpoint that delays the onset of anaphase until all the kinetochores are attached to the spindle. This protein may interact with the spindle checkpoint and coordinate cell cycle events in late mitosis. Alternatively spliced transcript variants encoding distinct isoforms have been observed.

**Synonyms:**

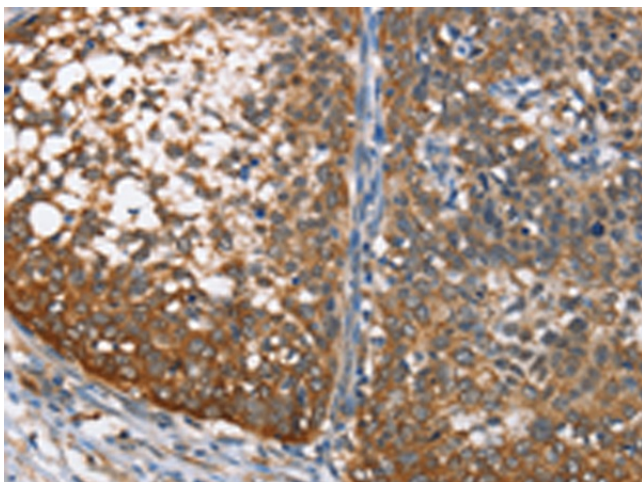
CMT2

**Protein Families:**

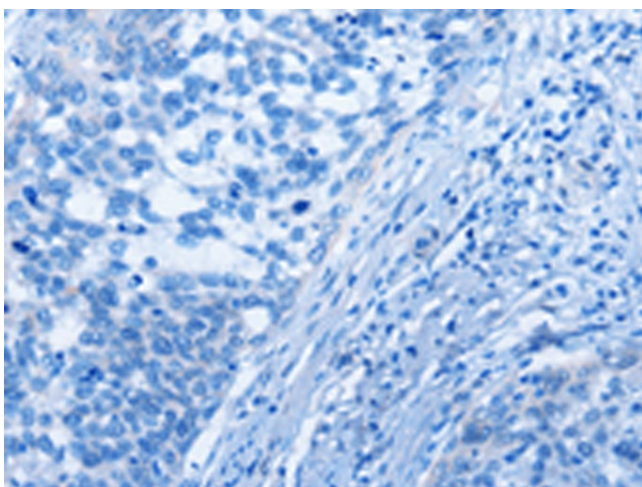
Druggable Genome

**Product images:**

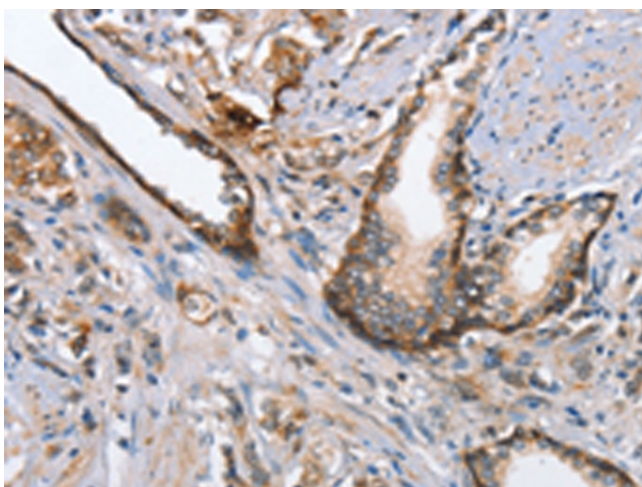
Gel: 10%SDS-PAGE  
Lysate: 40 µg  
Lane 1-4: A549 cells  
231 cells  
PC3 cells  
hela cells  
Primary antibody: TA349386 (MAD2L1BP Antibody) at dilution 1/675  
Secondary antibody: Goat anti rabbit IgG at 1/8000 dilution  
Exposure time: 20 seconds



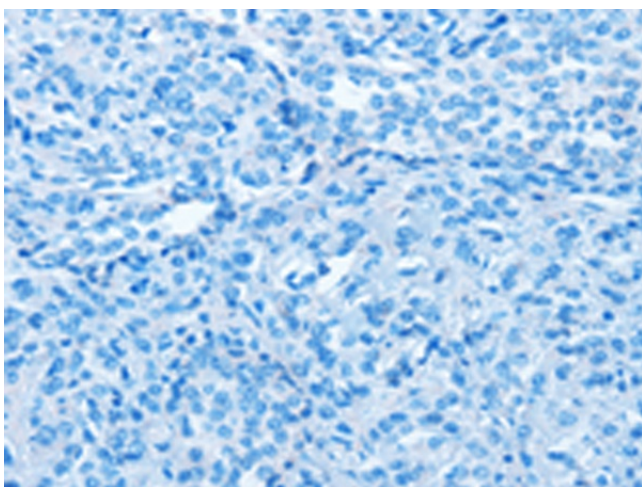
Immunohistochemistry of paraffin-embedded Human cervical cancer tissue using TA349386 (MAD2L1BP Antibody) at dilution 1/65 (Original magnification: ×200)



Immunohistochemistry of paraffin-embedded Human cervical cancer tissue using TA349386 (MAD2L1BP Antibody) at dilution 1/65, treated with fusion protein. (Original magnification:  $\times 200$ )



Immunohistochemistry of paraffin-embedded Human prostate cancer tissue using TA349386 (MAD2L1BP Antibody) at dilution 1/65 (Original magnification:  $\times 200$ )



Immunohistochemistry of paraffin-embedded Human prostate cancer tissue using TA349386 (MAD2L1BP Antibody) at dilution 1/65, treated with fusion protein. (Original magnification:  $\times 200$ )