

Product datasheet for **TA349385S**

MAD1 (MAD1L1) Rabbit Polyclonal Antibody

Product data:

Product Type:	Primary Antibodies
Applications:	IHC, WB
Recommended Dilution:	WB: 500-2000 WB positive control: Hela, 231, hepG2 and Raji cells IHC: 25-100 Positive control: Human brain Predicted cell location: Nucleus
Reactivity:	Human, Mouse
Host:	Rabbit
Isotype:	IgG
Clonality:	Polyclonal
Immunogen:	Fusion protein of human MAD1L1
Formulation:	pH7.4 PBS, 0.05% NaN ₃ , 40% Glycerol
Purification:	Antigen affinity purification
Conjugation:	Unconjugated
Storage:	Store at -20°C as received.
Stability:	Stable for 12 months from date of receipt.
Predicted Protein Size:	83 kDa
Gene Name:	MAD1 mitotic arrest deficient like 1
Database Link:	NP_003541 Entrez Gene 17120 Mouse Entrez Gene 8379 Human Q9Y6D9

Background: MAD1L1 is a component of the mitotic spindle-assembly checkpoint that prevents the onset of anaphase until all chromosome are properly aligned at the metaphase plate. MAD1L1 functions as a homodimer and interacts with MAD2L1. MAD1L1 may play a role in cell cycle control and tumor suppression. Three transcript variants encoding the same protein have been found for this gene.

Synonyms: MAD1; PIG9; TP53I9; TXBP181

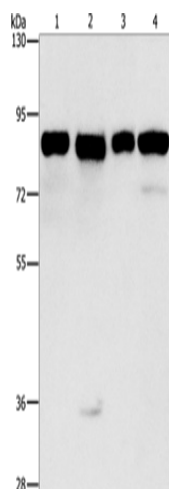


[View online »](#)

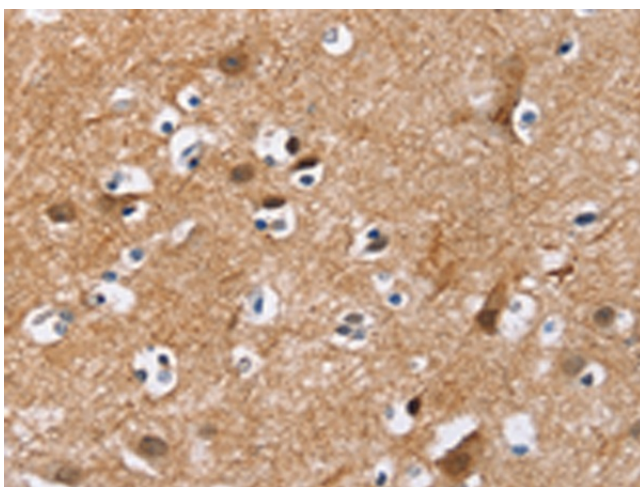
Protein Families: Druggable Genome

Protein Pathways: Cell cycle

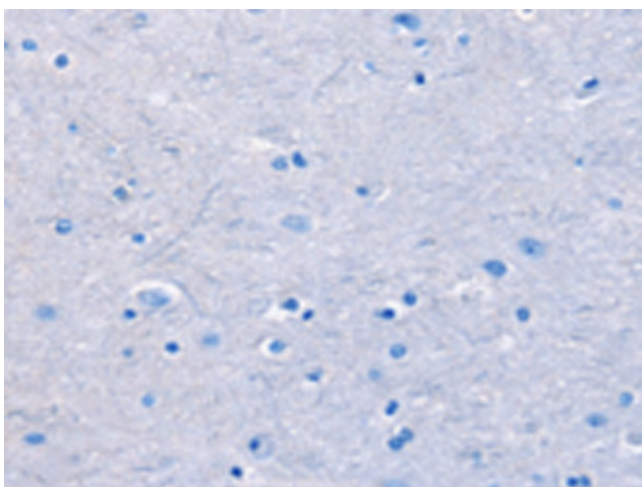
Product images:



Gel: 8%SDS-PAGE
Lysate: 40 μ g
Lane 1-4: HeLa cells
231 cells
HepG2 cells
Raji cells
Primary antibody: [TA349385] (MAD1L1 Antibody)
at dilution 1/500
Secondary antibody: Goat anti rabbit IgG at
1/8000 dilution
Exposure time: 1 second



Immunohistochemistry of paraffin-embedded
Human brain tissue using [TA349385] (MAD1L1
Antibody) at dilution 1/25 (Original magnification:
 $\times 200$)



Immunohistochemistry of paraffin-embedded Human brain tissue using [TA349385] (MAD1L1 Antibody) at dilution 1/25, treated with fusion protein. (Original magnification: ×200)