

## Product datasheet for **TA349382S**

### Lamin A (LMNA) Rabbit Polyclonal Antibody

#### Product data:

|                         |   |
|-------------------------|---|
| Product Type:           | Primary Antibodies  |
| Applications:           | IHC, WB   |
| Recommended Dilution:   | WB: 1000-5000<br>WB positive control: 293T cell lysate<br>IHC: 50-200<br>Positive control: Human cervical cancer<br>Predicted cell location: Nucleus                        |
| Reactivity:             | Human, Mouse, Rat   |
| Host:                   | Rabbit  |
| Isotype:                | IgG   |
| Clonality:              | Polyclonal  |
| Immunogen:              | Fusion protein of human LMNA  |
| Formulation:            | pH7.4 PBS, 0.05% NaN <sub>3</sub> , 40% Glycerol  |
| Purification:           | Antigen affinity purification   |
| Conjugation:            | Unconjugated  |
| Storage:                | Store at -20°C as received.   |
| Stability:              | Stable for 12 months from date of receipt.  |
| Predicted Protein Size: | 74 kDa  |
| Gene Name:              | lamin A/C   |
| Database Link:          | <a href="#">NP_733821</a><br><a href="#">Entrez Gene 16905 Mouse</a> <a href="#">Entrez Gene 60374 Rat</a> <a href="#">Entrez Gene 4000 Human</a><br><a href="#">P02545</a> |

**Background:** The nuclear lamina consists of a two-dimensional matrix of proteins located next to the inner nuclear membrane. The lamin family of proteins make up the matrix and are highly conserved in evolution. During mitosis, the lamina matrix is reversibly disassembled as the lamin proteins are phosphorylated. Lamin proteins are thought to be involved in nuclear stability, chromatin structure and gene expression. Vertebrate lamins consist of two types, A and B. Alternative splicing results in multiple transcript variants.



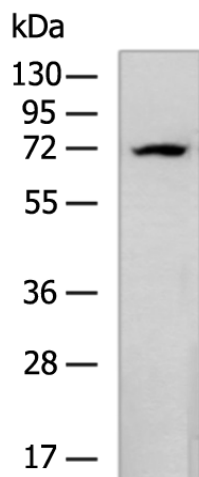
[View online »](#)

**Synonyms:** CDCD1; CDDC; CMD1A; CMT2B1; EMD2; FPL; FPLD; FPLD2; HGPS; IDC; LDP1; LFP; LGMD1B; LMN1; LMNC

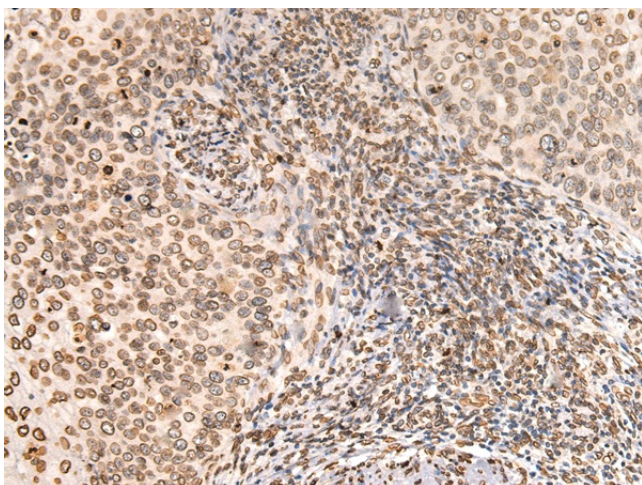
**Protein Families:** Druggable Genome

**Protein Pathways:** Arrhythmogenic right ventricular cardiomyopathy (ARVC), Dilated cardiomyopathy, Hypertrophic cardiomyopathy (HCM)

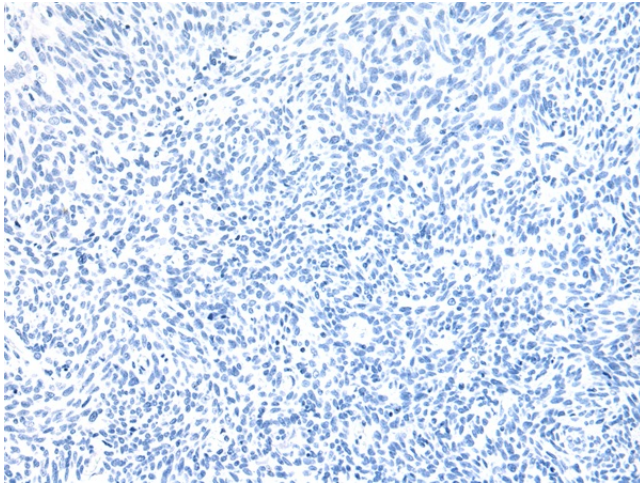
**Product images:**



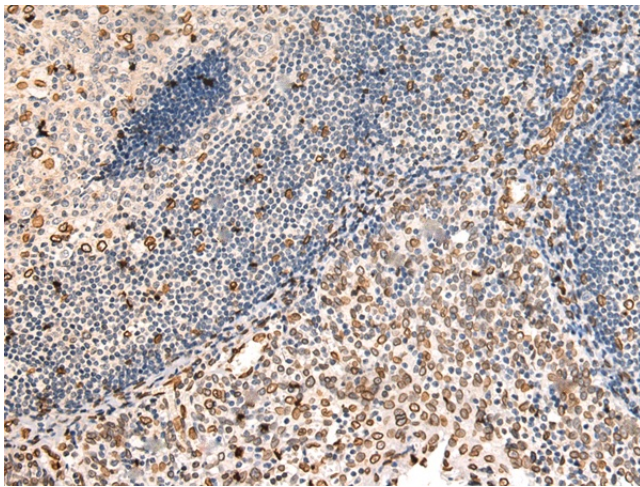
Gel: 8%SDS-PAGE  
 Lysate: 40 µg  
 Lane: 293T cell lysate  
 Primary antibody: [TA349382] (LMNA Antibody) at dilution 1/4000  
 Secondary antibody: Goat anti rabbit IgG at 1/5000 dilution  
 Exposure time: 20 seconds



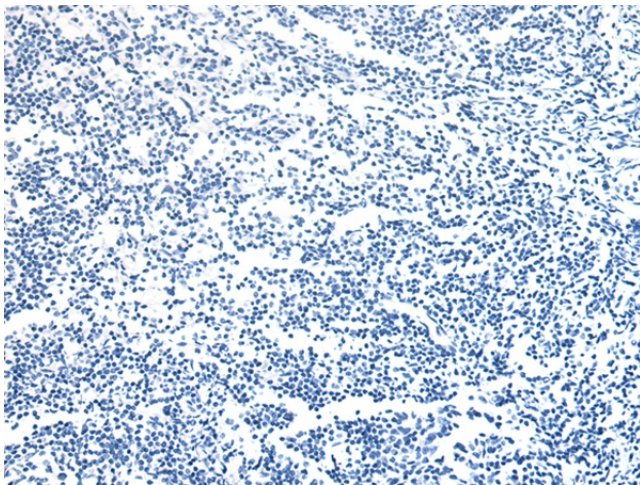
Immunohistochemistry of paraffin-embedded Human cervical cancer tissue using [TA349382] (LMNA Antibody) at dilution 1/80 (Original magnification: x200)



Immunohistochemistry of paraffin-embedded Human cervical cancer tissue using [TA349382] (LMNA Antibody) at dilution 1/80, treated with fusion protein. (Original magnification:  $\times 200$ )



Immunohistochemistry of paraffin-embedded Human tonsil tissue using [TA349382] (LMNA Antibody) at dilution 1/80 (Original magnification:  $\times 200$ )



Immunohistochemistry of paraffin-embedded Human tonsil tissue using [TA349382] (LMNA Antibody) at dilution 1/80, treated with fusion protein. (Original magnification:  $\times 200$ )