

## Product datasheet for **TA349381**

### Lamin B1 (LMNB1) Rabbit Polyclonal Antibody

#### Product data:

Product Type:	Primary Antibodies
Applications:	IHC, WB
Recommended Dilution:	WB: 1000-5000 WB positive control: Hela and HT-29 cells, human fetal liver and testis tissue, 231 and K562 cells, human bladder transitional cells carcinoma tissue IHC: 100-300 Positive control: Human tonsil Predicted cell location: Nucleus and Cytoplasm
Reactivity:	Human, Mouse, Rat
Host:	Rabbit
Isotype:	IgG
Clonality:	Polyclonal
Immunogen:	Fusion protein of human LMNB1
Formulation:	pH7.4 PBS, 0.05% NaN <sub>3</sub> , 40% Glycerol
Concentration:	lot specific
Purification:	Antigen affinity purification
Conjugation:	Unconjugated
Storage:	Store at -20°C as received.
Stability:	Stable for 12 months from date of receipt.
Predicted Protein Size:	67 kDa
Gene Name:	lamin B1
Database Link:	<a href="#">NP_005564</a> <a href="#">Entrez Gene 16906 Mouse</a> <a href="#">Entrez Gene 116685 Rat</a> <a href="#">Entrez Gene 4001 Human</a> <a href="#">P20700</a>



[View online »](#)

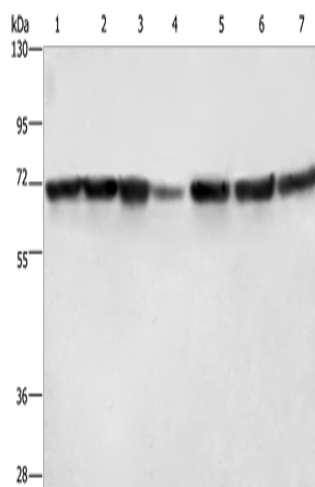
### Background:

The nuclear lamina consists of a two-dimensional matrix of proteins located next to the inner nuclear membrane. The lamin family of proteins make up the matrix and are highly conserved in evolution. During mitosis, the lamina matrix is reversibly disassembled as the lamin proteins are phosphorylated. Lamin proteins are thought to be involved in nuclear stability, chromatin structure and gene expression. Vertebrate lamins consist of two types, A and B. This gene encodes one of the two B type proteins, B1. Alternative splicing results in transcript variants and a duplication of this gene is associated with autosomal dominant adult-onset leukodystrophy (ADLD).

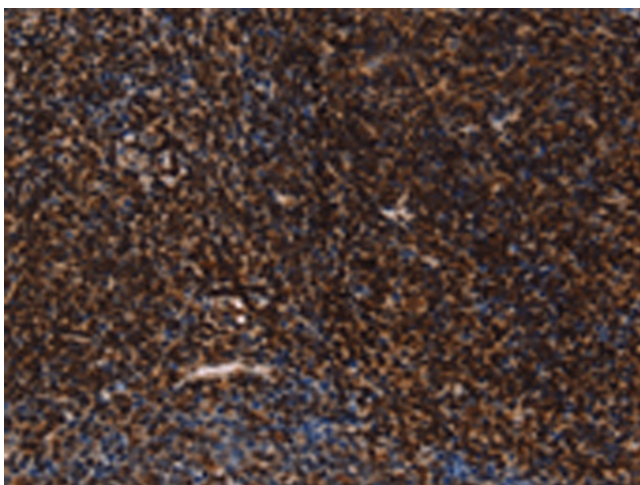
### Synonyms:

ADLD; LMN; LMN2; LMNB

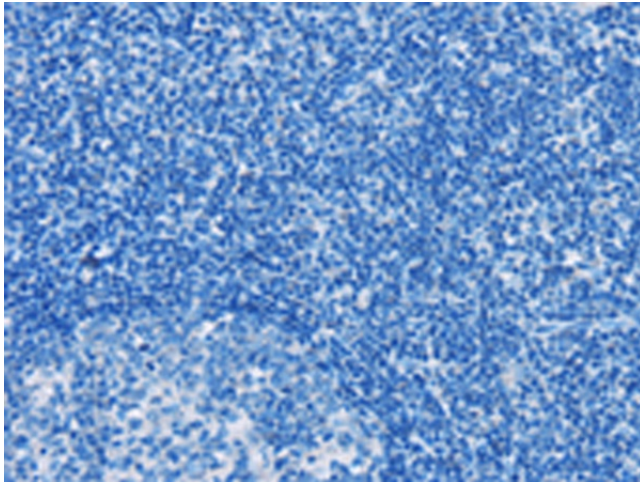
### Product images:



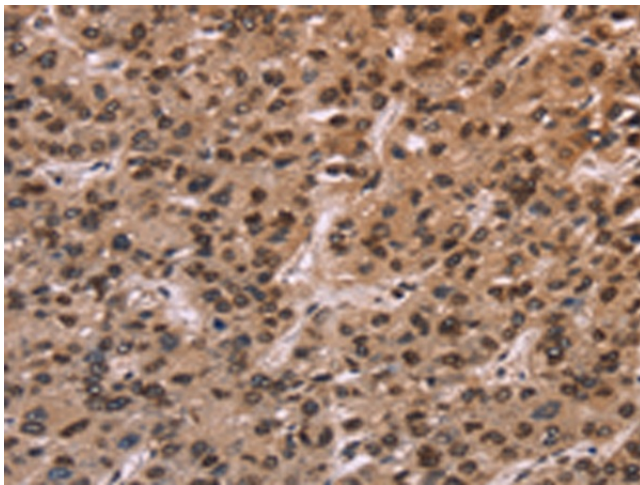
Gel: 6%SDS-PAGE  
 Lysate: 40 µg  
 Lane 1-7: HeLa cells  
 HT29 cells  
 human fetal liver tissue  
 Human testis tissue  
 231 cells  
 K562 cells  
 human bladder transitional cell carcinoma tissue  
 Primary antibody: TA349381 (LMNB1 Antibody) at dilution 1/750  
 Secondary antibody: Goat anti rabbit IgG at 1/8000 dilution  
 Exposure time: 1 second



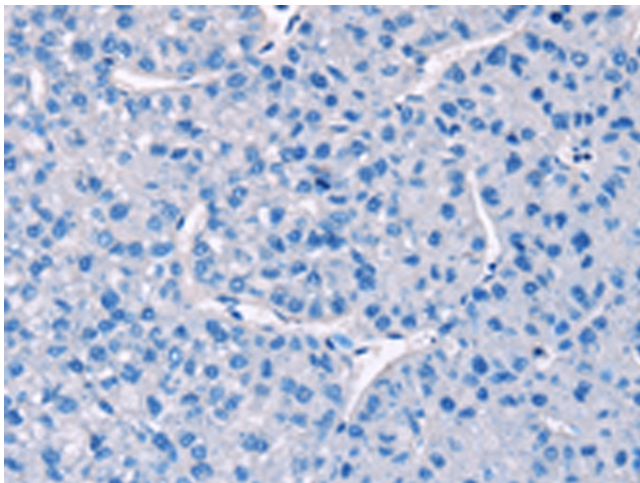
Immunohistochemistry of paraffin-embedded Human tonsil tissue using TA349381 (LMNB1 Antibody) at dilution 1/60 (Original magnification: ×200)



Immunohistochemistry of paraffin-embedded Human tonsil tissue using TA349381 (LMNB1 Antibody) at dilution 1/60, treated with fusion protein. (Original magnification: ×200)



Immunohistochemistry of paraffin-embedded Human liver cancer tissue using TA349381 (LMNB1 Antibody) at dilution 1/60 (Original magnification: ×200)



Immunohistochemistry of paraffin-embedded Human liver cancer tissue using TA349381 (LMNB1 Antibody) at dilution 1/60, treated with fusion protein. (Original magnification: ×200)