

Product datasheet for **TA349375**

Kallikrein 4 (KLK4) Rabbit Polyclonal Antibody

Product data:

Product Type:	Primary Antibodies
Applications:	IHC
Recommended Dilution:	IHC: 100-200 Positive control: Human prostate cancer Predicted cell location: Secreted
Reactivity:	Human
Host:	Rabbit
Isotype:	IgG
Clonality:	Polyclonal
Immunogen:	Fusion protein of human KLK4
Formulation:	pH7.4 PBS, 0.05% NaN ₃ , 40% Glycerol
Concentration:	lot specific
Purification:	Antigen affinity purification
Conjugation:	Unconjugated
Storage:	Store at -20°C as received.
Stability:	Stable for 12 months from date of receipt.
Gene Name:	kallikrein related peptidase 4
Database Link:	NP_004908 Entrez Gene 9622 Human Q9Y5K2

Background: Kallikreins are a subgroup of serine proteases having diverse physiological functions. Growing evidence suggests that many kallikreins are implicated in carcinogenesis and some have potential as novel cancer and other disease biomarkers. This gene is one of the fifteen kallikrein subfamily members located in a cluster on chromosome 19. In some tissues its expression is hormonally regulated. The expression pattern of a similar mouse protein in murine developing teeth supports a role for the protein in the degradation of enamel proteins. Alternate splice variants for this gene have been described, but their biological validity has not been determined.

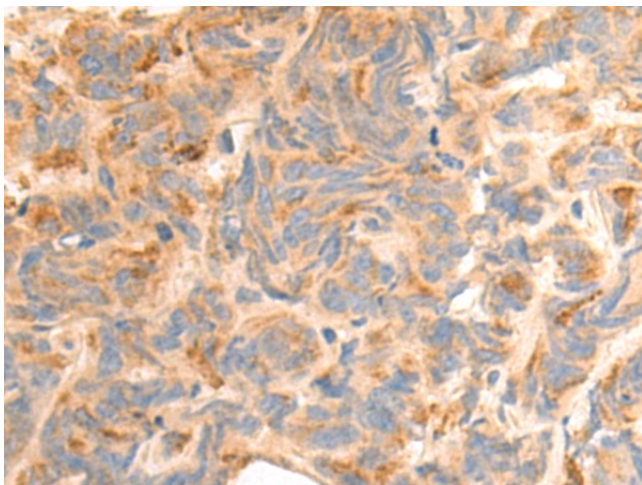


[View online »](#)

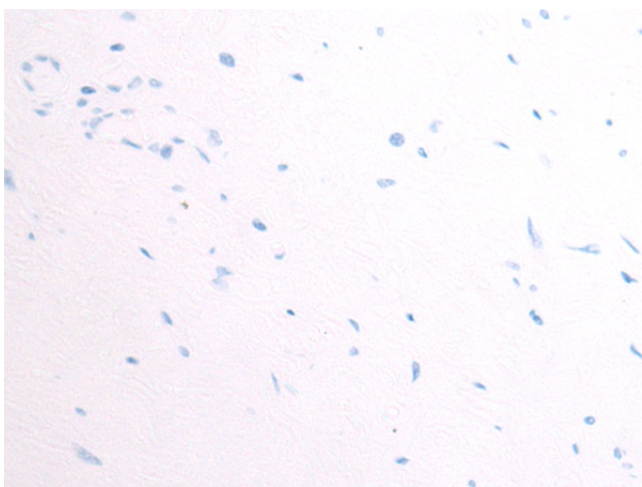
Synonyms: AI2A1; ARM1; EMSP; EMSP1; kallikrein; KLK-L1; PRSS17; PSTS

Protein Families: Druggable Genome, Secreted Protein, Transmembrane

Product images:



Immunohistochemistry of paraffin-embedded Human prostate cancer tissue using TA349375 (KLK4 Antibody) at dilution 1/100 (Original magnification: ×200)



Immunohistochemistry of paraffin-embedded Human prostate cancer tissue using TA349375 (KLK4 Antibody) at dilution 1/100, treated with fusion protein. (Original magnification: ×200)