

Product datasheet for **TA349371**

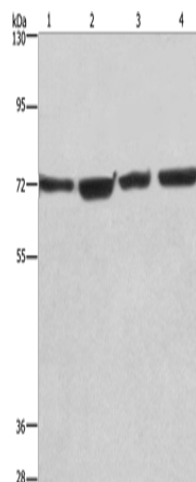
FKLF / KLF11 (KLF11) Rabbit Polyclonal Antibody

Product data:

Product Type:	Primary Antibodies
Applications:	WB
Recommended Dilution:	WB: 500-2000 WB positive control: HUVEC, NIH/3T3, Hela and 293T cells
Reactivity:	Human, Mouse
Host:	Rabbit
Isotype:	IgG
Clonality:	Polyclonal
Immunogen:	Fusion protein of human KLF11
Formulation:	pH7.4 PBS, 0.05% NaN ₃ , 40% Glycerol
Concentration:	lot specific
Purification:	Antigen affinity purification
Conjugation:	Unconjugated
Storage:	Store at -20°C as received.
Stability:	Stable for 12 months from date of receipt.
Predicted Protein Size:	55 kDa
Gene Name:	Kruppel-like factor 11
Database Link:	NP_003588 Entrez Gene 194655 Mouse Entrez Gene 8462 Human Q14901
Background:	The protein encoded by this gene is a zinc finger transcription factor that binds to SP1-like sequences in epsilon- and gamma-globin gene promoters. This binding inhibits cell growth and causes apoptosis. Defects in this gene are a cause of maturity-onset diabetes of the young type 7 (MODY7). Three transcript variants encoding two different isoforms have been found for this gene.
Synonyms:	FKLF; FKLF1; MODY7; TIEG2; Tieg3
Protein Families:	Transcription Factors



[View online »](#)

Product images:

Gel: 6%SDS-PAGE

Lysate: 40 µg

Lane 1-4: HUVEC cells

NIH/3T3 cells

HeLa cells

293T cells

Primary antibody: TA349371 (KLF11 Antibody) at dilution 1/475

Secondary antibody: Goat anti rabbit IgG at 1/8000 dilution

Exposure time: 30 seconds