

## Product datasheet for **TA349368**

### LILRB2 Rabbit Polyclonal Antibody

#### Product data:

|                         |  |
|-------------------------|--|
| Product Type:           | Primary Antibodies   |
| Applications:           | IHC, WB  |
| Recommended Dilution:   | WB: 500-2000<br>WB positive control: Hela cell, Raji cell, HepG2 cell lysates<br>IHC: 50-200<br>Positive control: Human liver cancer<br>Predicted cell location: Cytoplasm |
| Reactivity:             | Human  |
| Host:                   | Rabbit   |
| Isotype:                | IgG  |
| Clonality:              | Polyclonal   |
| Immunogen:              | Fusion protein of human LILRB2   |
| Formulation:            | pH7.4 PBS, 0.05% NaN <sub>3</sub> , 40% Glycerol   |
| Concentration:          | lot specific   |
| Purification:           | Antigen affinity purification  |
| Conjugation:            | Unconjugated   |
| Storage:                | Store at -20°C as received.  |
| Stability:              | Stable for 12 months from date of receipt.   |
| Predicted Protein Size: | 65 kDa   |
| Gene Name:              | leukocyte immunoglobulin like receptor B2  |
| Database Link:          | <a href="#">NP_005865</a><br><a href="#">Entrez Gene 10288 Human</a>   |



[View online »](#)

**Background:**

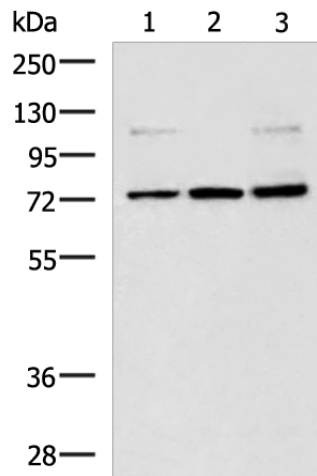
This gene is a member of the leukocyte immunoglobulin-like receptor (LIR) family, which is found in a gene cluster at chromosomal region 19q13.4. The encoded protein belongs to the subfamily B class of LIR receptors which contain two or four extracellular immunoglobulin domains, a transmembrane domain, and two to four cytoplasmic immunoreceptor tyrosine-based inhibitory motifs (ITIMs). The receptor is expressed on immune cells where it binds to MHC class I molecules on antigen-presenting cells and transduces a negative signal that inhibits stimulation of an immune response.

**Synonyms:**

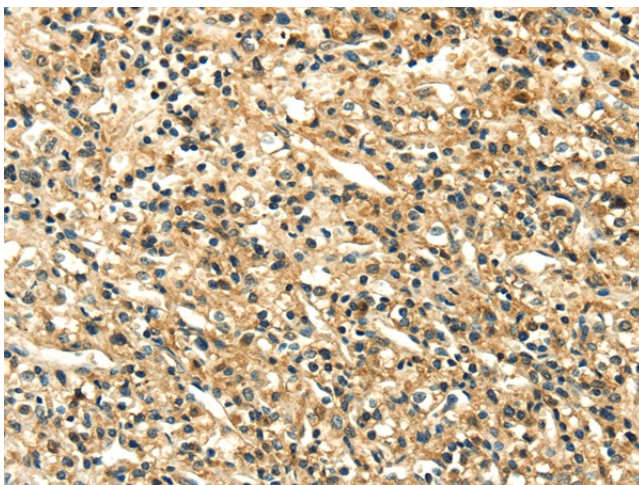
CD85D; ILT-4; ILT4; LIR-2; LIR2; MIR-10; MIR10

**Protein Families:**

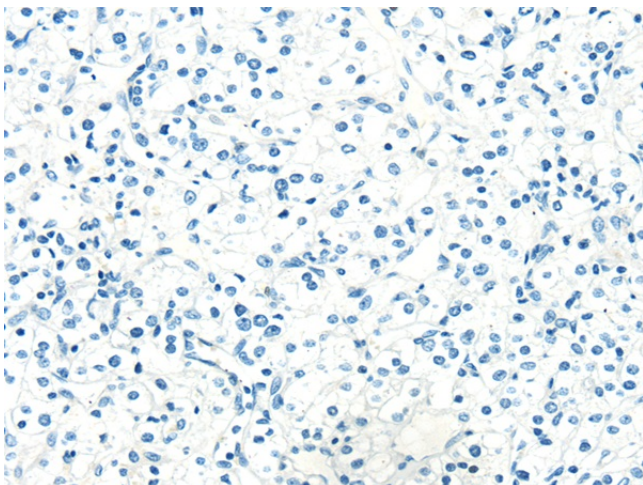
Transmembrane

**Product images:**


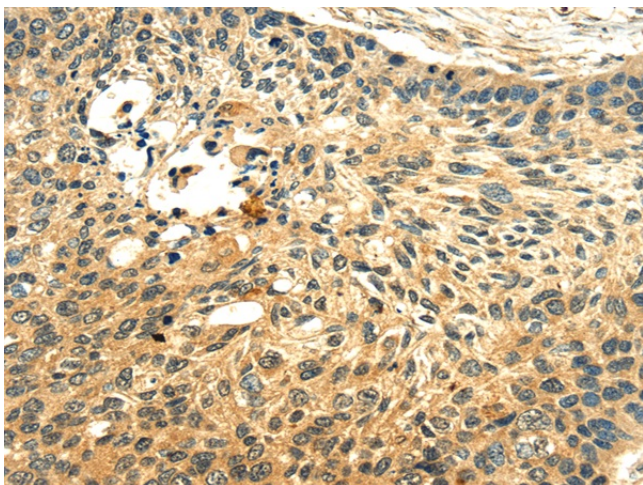
Gel: 8%SDS-PAGE  
 Lysate: 40 µg  
 Lane 1-3: HeLa cell  
 Raji cell  
 HepG2 cell lysates  
 Primary antibody: TA349368 (LILRB2 Antibody) at dilution 1/500  
 Secondary antibody: Goat anti rabbit IgG at 1/5000 dilution  
 Exposure time: 30 seconds



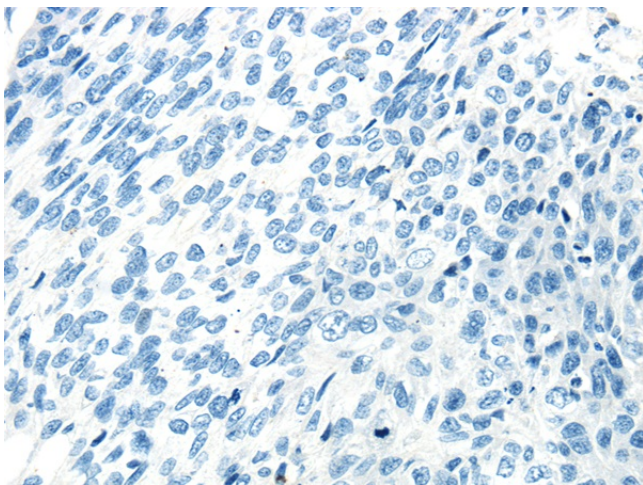
Immunohistochemistry of paraffin-embedded Human liver cancer tissue using TA349368 (LILRB2 Antibody) at dilution 1/50 (Original magnification: ×200)



Immunohistochemistry of paraffin-embedded Human liver cancer tissue using TA349368 (LILRB2 Antibody) at dilution 1/50, treated with fusion protein. (Original magnification:  $\times 200$ )



Immunohistochemistry of paraffin-embedded Human lung cancer tissue using TA349368 (LILRB2 Antibody) at dilution 1/50 (Original magnification:  $\times 200$ )



Immunohistochemistry of paraffin-embedded Human lung cancer tissue using TA349368 (LILRB2 Antibody) at dilution 1/50, treated with fusion protein. (Original magnification:  $\times 200$ )