

## Product datasheet for **TA349362**

### IRF6 Rabbit Polyclonal Antibody

#### Product data:

Product Type:	Primary Antibodies
Applications:	IHC, WB
Recommended Dilution:	WB: 200-1000 WB positive control: 231 cells, mouse kidney and lung tissue IHC: 50-200 Positive control: Human cervical cancer Predicted cell location: Nucleus and Cytoplasm
Reactivity:	Human, Mouse
Host:	Rabbit
Isotype:	IgG
Clonality:	Polyclonal
Immunogen:	Fusion protein of human IRF6
Formulation:	pH7.4 PBS, 0.05% NaN <sub>3</sub> , 40% Glycerol
Concentration:	lot specific
Purification:	Antigen affinity purification
Conjugation:	Unconjugated
Storage:	Store at -20°C as received.
Stability:	Stable for 12 months from date of receipt.
Predicted Protein Size:	53 kDa
Gene Name:	interferon regulatory factor 6
Database Link:	<a href="#">NP_006138</a> <a href="#">Entrez Gene 54139 Mouse</a> <a href="#">Entrez Gene 3664 Human</a> <a href="#">O14896</a>



[View online »](#)

**Background:**

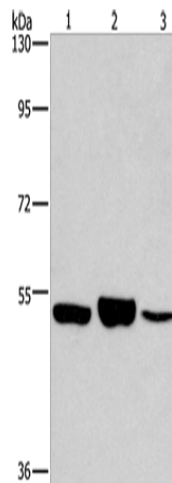
This gene encodes a member of the interferon regulatory transcription factor (IRF) family. Family members share a highly-conserved N-terminal helix-turn-helix DNA-binding domain and a less conserved C-terminal protein-binding domain. The encoded protein may be a transcriptional activator. Mutations in this gene can cause van der Woude syndrome and popliteal pterygium syndrome. Mutations in this gene are also associated with non-syndromic orofacial cleft type 6. Alternate splicing results in multiple transcript variants.

**Synonyms:**

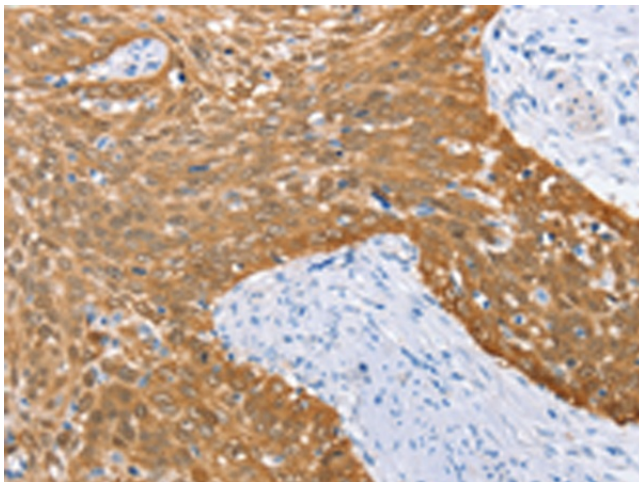
LPS; OFC6; PIT; PPS; PPS1; VWS; VWS1

**Protein Families:**

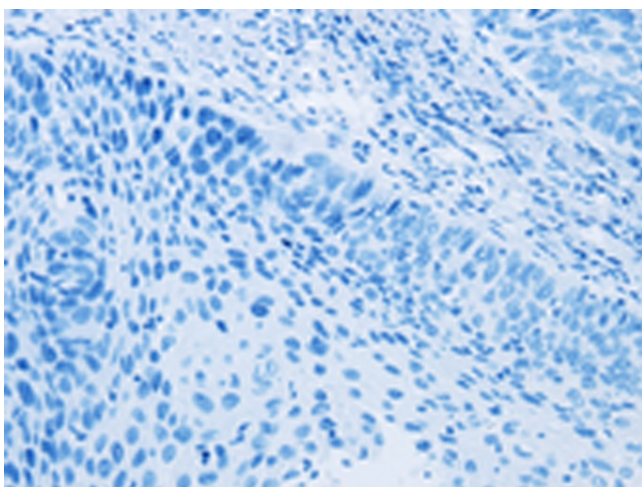
ES Cell Differentiation/IPS, Transcription Factors

**Product images:**


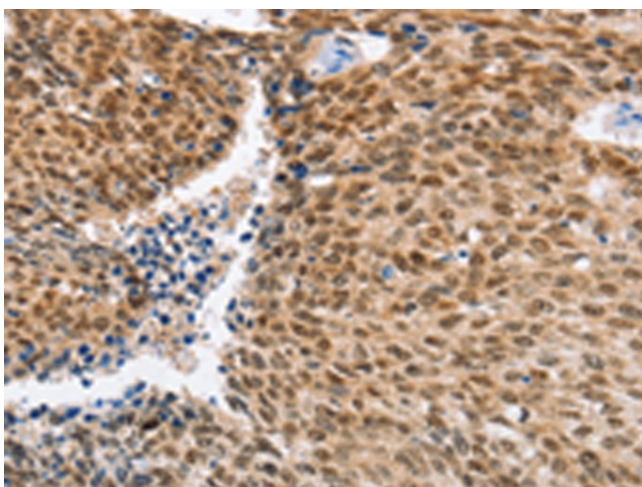
Gel: 8%SDS-PAGE  
 Lysate: 40  $\mu$ g  
 Lane 1-3: 231 cells  
 mouse kidney tissue  
 Mouse lung tissue  
 Primary antibody: TA349362 (IRF6 Antibody) at dilution 1/400  
 Secondary antibody: Goat anti rabbit IgG at 1/8000 dilution  
 Exposure time: 5 minutes



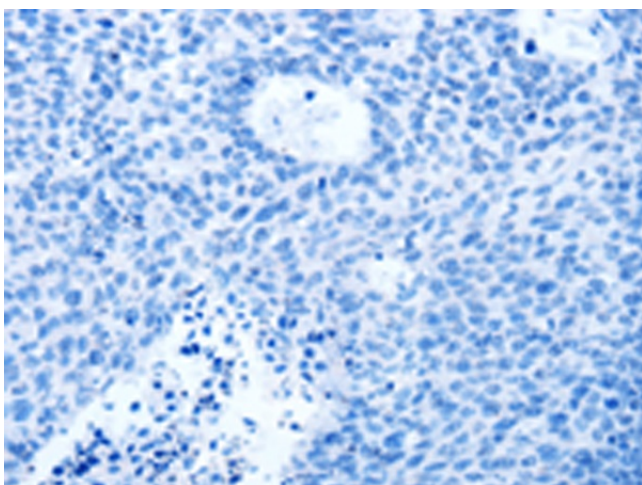
Immunohistochemistry of paraffin-embedded Human cervical cancer tissue using TA349362 (IRF6 Antibody) at dilution 1/50 (Original magnification:  $\times$ 200)



Immunohistochemistry of paraffin-embedded Human cervical cancer tissue using TA349362 (IRF6 Antibody) at dilution 1/50, treated with fusion protein. (Original magnification:  $\times 200$ )



Immunohistochemistry of paraffin-embedded Human lung cancer tissue using TA349362 (IRF6 Antibody) at dilution 1/50 (Original magnification:  $\times 200$ )



Immunohistochemistry of paraffin-embedded Human lung cancer tissue using TA349362 (IRF6 Antibody) at dilution 1/50, treated with fusion protein. (Original magnification:  $\times 200$ )