

## Product datasheet for **TA349360**

### **IQGAP3 Rabbit Polyclonal Antibody**

#### **Product data:**

Product Type:	Primary Antibodies
Applications:	WB
Recommended Dilution:	WB: 200-1000 WB positive control: Mouse lung tissue
Reactivity:	Human, Mouse
Host:	Rabbit
Isotype:	IgG
Clonality:	Polyclonal
Immunogen:	Fusion protein of human IQGAP3
Formulation:	pH7.4 PBS, 0.05% NaN <sub>3</sub> , 40% Glycerol
Concentration:	lot specific
Purification:	Antigen affinity purification
Conjugation:	Unconjugated
Storage:	Store at -20°C as received.
Stability:	Stable for 12 months from date of receipt.
Predicted Protein Size:	185 kDa
Gene Name:	IQ motif containing GTPase activating protein 3
Database Link:	<a href="#">NP_839943</a> <a href="#">Entrez Gene 404710 Mouse</a> <a href="#">Entrez Gene 128239 Human</a> <a href="#">Q86VI3</a>



[View online »](#)

**Background:**

IQGAP3 (IQ motif containing GTPase activating protein 3) is a 1,631 amino acid protein that acts as an effector of Cdc42 and Rac 1, linking their activation to the cytoskeleton during neuronal morphogenesis. A novel member of the IQGAP family, IQGAP3 is highly expressed in brain where it localizes to axons of hippocampal neurons. IQGAP3 contains one Ras-GAP domain, a CH (calponin-homology) domain, four IQ domains and is encoded by a gene located on human chromosome 1, which spans 260 million base pairs, contains over 3,000 genes and comprises nearly 8% of the human genome. Chromosome 1 houses a large number of disease-associated genes, including those that are involved in familial adenomatous polyposis, Stickler syndrome, Parkinson's disease, Gaucher disease, schizophrenia and Usher syndrome. Aberrations in chromosome 1 are found in a variety of cancers, including head and neck cancer, malignant melanoma and multiple myeloma.

**Synonyms:**

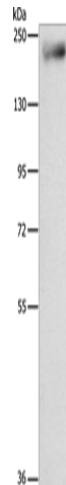
MGC1947; MGC10170; MGC10831

**Protein Families:**

Druggable Genome

**Protein Pathways:**

Regulation of actin cytoskeleton

**Product images:**

Gel: 8%SDS-PAGE

Lysate: 40 µg

Lane: Mouse lung tissue

Primary antibody: TA349360 (IQGAP3 Antibody)  
at dilution 1/850

Secondary antibody: Goat anti rabbit IgG at  
1/8000 dilution

Exposure time: 1 minute