

## Product datasheet for **TA349358**

### Integrin beta 1 (ITGB1) Rabbit Polyclonal Antibody

#### Product data:

Product Type:	Primary Antibodies
Applications:	IHC, WB
Recommended Dilution:	WB: 500-2000 WB positive control: Human leiomyosarcoma tissue, Human gastric carcinoma tissue, Human stomach tissue lysates IHC: 50-200 Positive control: Human liver cancer Predicted cell location: Cytoplasm
Reactivity:	Human, Mouse, Rat
Host:	Rabbit
Isotype:	IgG
Clonality:	Polyclonal
Immunogen:	Fusion protein of human ITGB1
Formulation:	pH7.4 PBS, 0.05% NaN <sub>3</sub> , 40% Glycerol
Concentration:	lot specific
Purification:	Antigen affinity purification
Conjugation:	Unconjugated
Storage:	Store at -20°C as received.
Stability:	Stable for 12 months from date of receipt.
Predicted Protein Size:	88 kDa
Gene Name:	integrin subunit beta 1
Database Link:	<a href="#">NP_002202</a> <a href="#">Entrez Gene 16412 Mouse</a> <a href="#">Entrez Gene 24511 Rat</a> <a href="#">Entrez Gene 3688 Human</a> <a href="#">P05556</a>



[View online »](#)

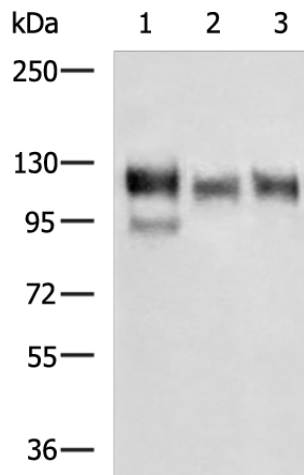
**Background:** Integrins are heterodimeric proteins made up of alpha and beta subunits. At least 18 alpha and 8 beta subunits have been described in mammals. Integrin family members are membrane receptors involved in cell adhesion and recognition in a variety of processes including embryogenesis, hemostasis, tissue repair, immune response and metastatic diffusion of tumor cells. This gene encodes a beta subunit. Multiple alternatively spliced transcript variants which encode different protein isoforms have been found for this gene.

**Synonyms:** CD29; FNRB; GPIIA; MDF2; MSK12; VLA-BETA; VLAB

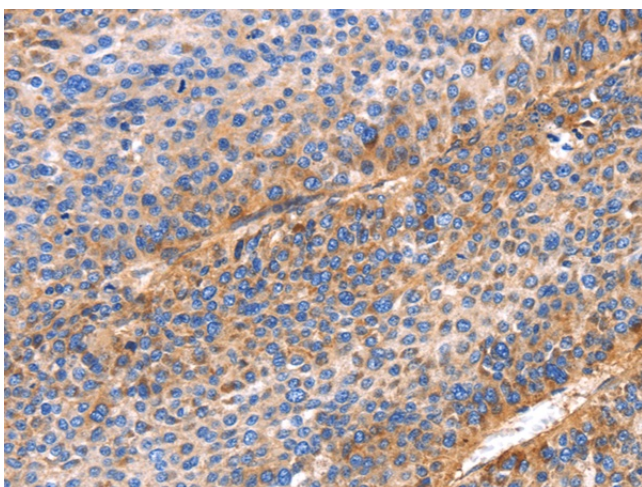
**Protein Families:** Druggable Genome, ES Cell Differentiation/IPS, Transmembrane

**Protein Pathways:** Arrhythmogenic right ventricular cardiomyopathy (ARVC), Axon guidance, Cell adhesion molecules (CAMs), Dilated cardiomyopathy, ECM-receptor interaction, Focal adhesion, Hypertrophic cardiomyopathy (HCM), Leukocyte transendothelial migration, Pathogenic Escherichia coli infection, Pathways in cancer, Regulation of actin cytoskeleton, Small cell lung cancer

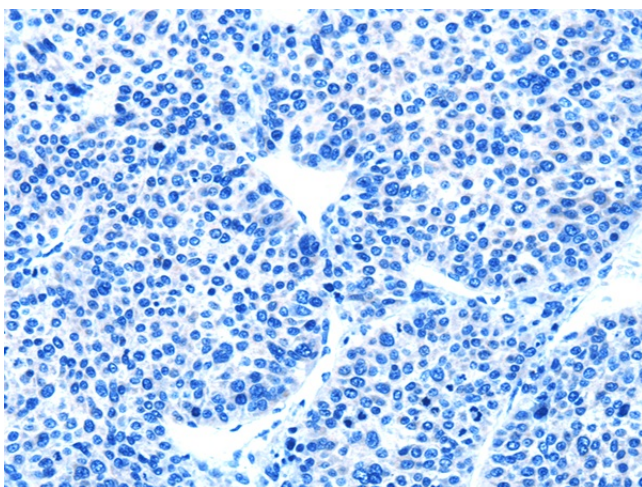
**Product images:**



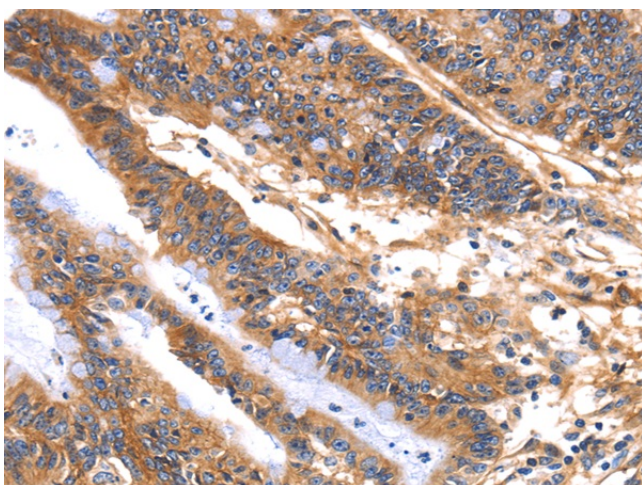
Gel: 6%SDS-PAGE  
 Lysate: 40 µg  
 Lane 1-3: Human leiomyosarcoma tissue  
 Human gastric carcinoma tissue  
 Human stomach tissue lysates  
 Primary antibody: TA349358 (ITGB1 Antibody) at dilution 1/100  
 Secondary antibody: Goat anti rabbit IgG at 1/5000 dilution  
 Exposure time: 5 seconds



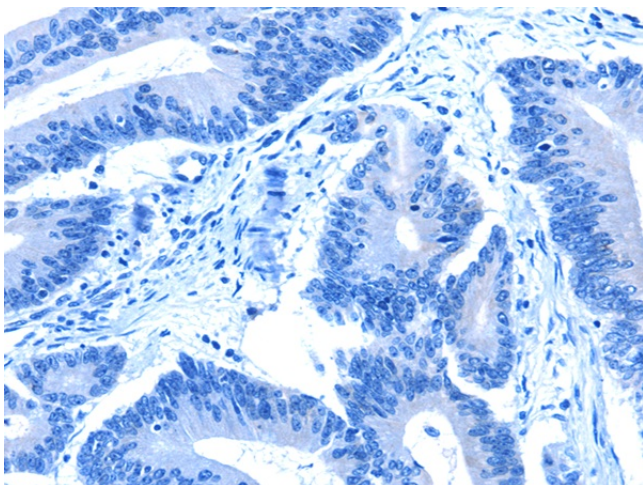
Immunohistochemistry of paraffin-embedded Human liver cancer tissue using TA349358 (ITGB1 Antibody) at dilution 1/60 (Original magnification:  $\times 200$ )



Immunohistochemistry of paraffin-embedded Human liver cancer tissue using TA349358 (ITGB1 Antibody) at dilution 1/60, treated with fusion protein. (Original magnification:  $\times 200$ )



Immunohistochemistry of paraffin-embedded Human colon cancer tissue using TA349358 (ITGB1 Antibody) at dilution 1/60 (Original magnification:  $\times 200$ )



Immunohistochemistry of paraffin-embedded Human colon cancer tissue using TA349358 (ITGB1 Antibody) at dilution 1/60, treated with fusion protein. (Original magnification: ×200)