

## Product datasheet for **TA349357S**

### CD61 (ITGB3) Rabbit Polyclonal Antibody

#### Product data:

Product Type:	Primary Antibodies
Applications:	IHC, WB
Recommended Dilution:	WB: 1000-5000 WB positive control: HUVEC cell lysate IHC: 150-300 Positive control: Human prostate cancer Predicted cell location: Cytoplasm
Reactivity:	Human, Mouse, Rat
Host:	Rabbit
Isotype:	IgG
Clonality:	Polyclonal
Immunogen:	Fusion protein of human ITGB3
Formulation:	pH7.4 PBS, 0.05% NaN <sub>3</sub> , 40% Glycerol
Purification:	Antigen affinity purification
Conjugation:	Unconjugated
Storage:	Store at -20°C as received.
Stability:	Stable for 12 months from date of receipt.
Predicted Protein Size:	87 kDa
Gene Name:	integrin subunit beta 3
Database Link:	<a href="#">NP_000203</a> <a href="#">Entrez Gene 16416 Mouse</a> <a href="#">Entrez Gene 29302 Rat</a> <a href="#">Entrez Gene 3690 Human</a> <a href="#">P05106</a>
Background:	The ITGB3 protein product is the integrin beta chain beta 3. Integrins are integral cell-surface proteins composed of an alpha chain and a beta chain. A given chain may combine with multiple partners resulting in different integrins. Integrin beta 3 is found along with the alpha IIb chain in platelets. Integrins are known to participate in cell adhesion as well as cell-surface mediated signalling.
Synonyms:	BDPLT2; BDPLT16; CD61; GP3A; GPIIIa; GT

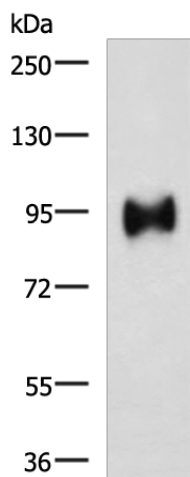


[View online »](#)

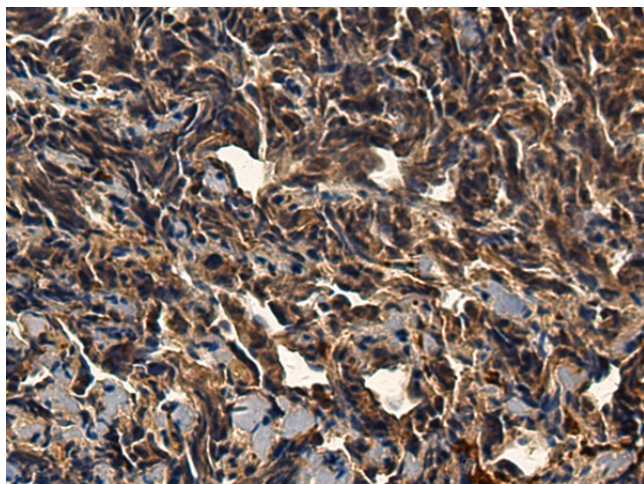
**Protein Families:** Druggable Genome, ES Cell Differentiation/IPS, Transmembrane

**Protein Pathways:** Arrhythmogenic right ventricular cardiomyopathy (ARVC), Dilated cardiomyopathy, ECM-receptor interaction, Focal adhesion, Hematopoietic cell lineage, Hypertrophic cardiomyopathy (HCM), Regulation of actin cytoskeleton

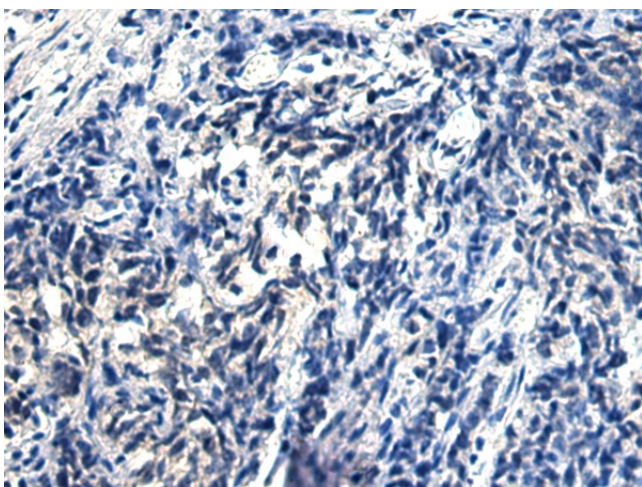
### Product images:



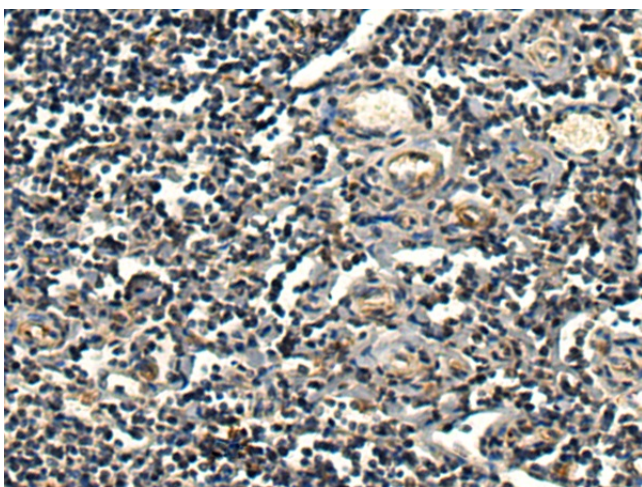
Gel: 6%SDS-PAGE  
Lysate: 40 µg  
Lane: HUVEC cell lysate  
Primary antibody: [TA349357] (ITGB3 Antibody) at dilution 1/1000  
Secondary antibody: Goat anti rabbit IgG at 1/5000 dilution  
Exposure time: 1 minute



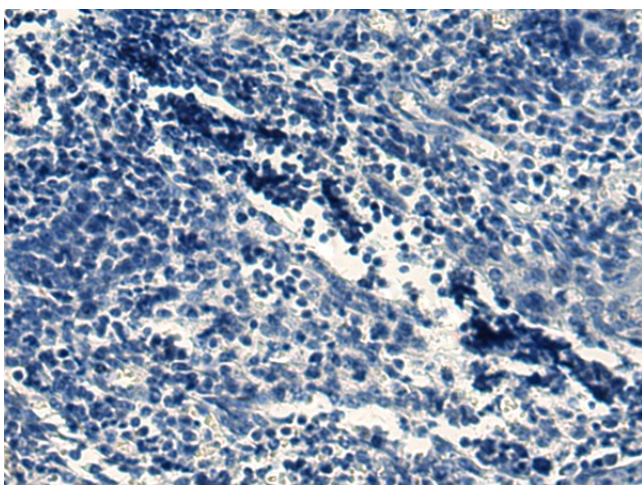
Immunohistochemistry of paraffin-embedded Human prostate cancer tissue using [TA349357] (ITGB3 Antibody) at dilution 1/150 (Original magnification: ×200)



Immunohistochemistry of paraffin-embedded Human prostate cancer tissue using [TA349357] (ITGB3 Antibody) at dilution 1/150, treated with fusion protein. (Original magnification:  $\times 200$ )



Immunohistochemistry of paraffin-embedded Human tonsil tissue using [TA349357] (ITGB3 Antibody) at dilution 1/150 (Original magnification:  $\times 200$ )



Immunohistochemistry of paraffin-embedded Human tonsil tissue using [TA349357] (ITGB3 Antibody) at dilution 1/150, treated with fusion protein. (Original magnification:  $\times 200$ )