

Product datasheet for **TA349357**

CD61 (ITGB3) Rabbit Polyclonal Antibody

Product data:

| | |
|-------------------------|---|
| Product Type: | Primary Antibodies |
| Applications: | IHC, WB |
| Recommended Dilution: | WB: 1000-5000 WB positive control: HUVEC cell lysate IHC: 150-300 Positive control: Human prostate cancer Predicted cell location: Cytoplasm |
| Reactivity: | Human, Mouse, Rat |
| Host: | Rabbit |
| Isotype: | IgG |
| Clonality: | Polyclonal |
| Immunogen: | Fusion protein of human ITGB3 |
| Formulation: | pH7.4 PBS, 0.05% NaN ₃ , 40% Glycerol |
| Concentration: | lot specific |
| Purification: | Antigen affinity purification |
| Conjugation: | Unconjugated |
| Storage: | Store at -20°C as received. |
| Stability: | Stable for 12 months from date of receipt. |
| Predicted Protein Size: | 87 kDa |
| Gene Name: | integrin subunit beta 3 |
| Database Link: | NP_000203 Entrez Gene 16416 Mouse Entrez Gene 29302 Rat Entrez Gene 3690 Human P05106 |

Background: The ITGB3 protein product is the integrin beta chain beta 3. Integrins are integral cell-surface proteins composed of an alpha chain and a beta chain. A given chain may combine with multiple partners resulting in different integrins. Integrin beta 3 is found along with the alpha IIb chain in platelets. Integrins are known to participate in cell adhesion as well as cell-surface mediated signalling.



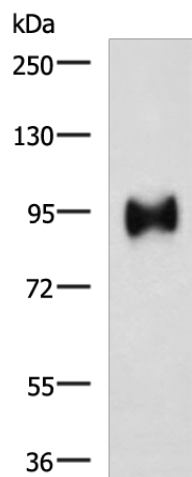
[View online »](#)

Synonyms: BDPLT2; BDPLT16; CD61; GP3A; GPIIIa; GT

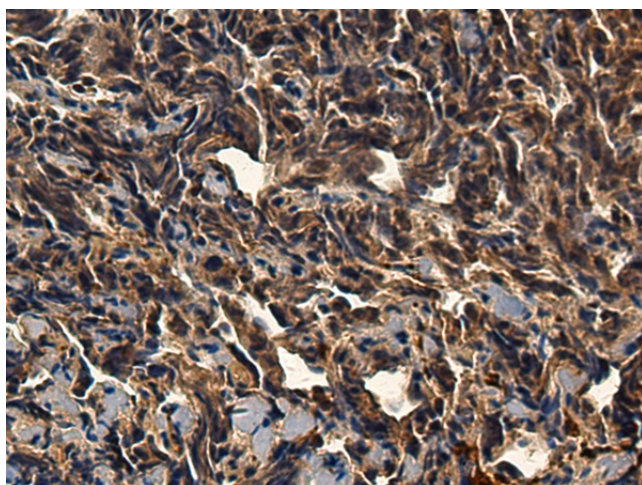
Protein Families: Druggable Genome, ES Cell Differentiation/IPS, Transmembrane

Protein Pathways: Arrhythmogenic right ventricular cardiomyopathy (ARVC), Dilated cardiomyopathy, ECM-receptor interaction, Focal adhesion, Hematopoietic cell lineage, Hypertrophic cardiomyopathy (HCM), Regulation of actin cytoskeleton

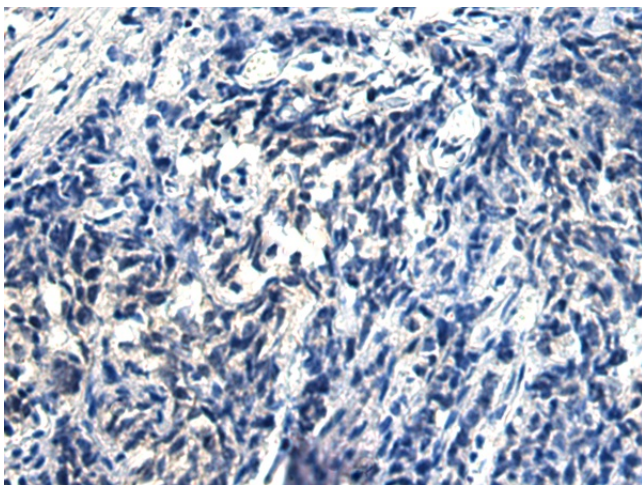
Product images:



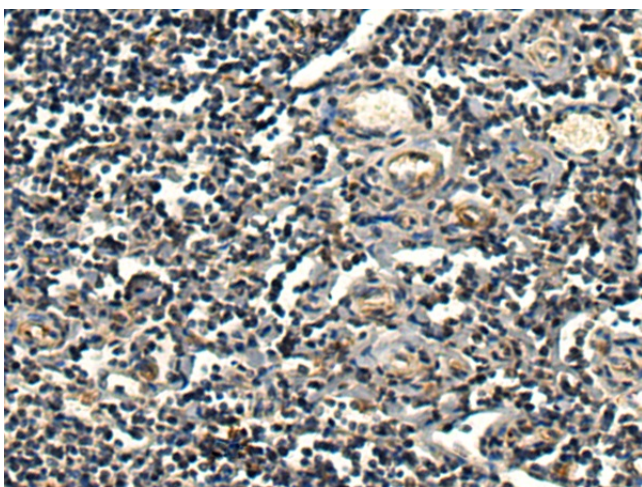
Gel: 6%SDS-PAGE
Lysate: 40 µg
Lane: HUVEC cell lysate
Primary antibody: TA349357 (ITGB3 Antibody) at dilution 1/1000
Secondary antibody: Goat anti rabbit IgG at 1/5000 dilution
Exposure time: 1 minute



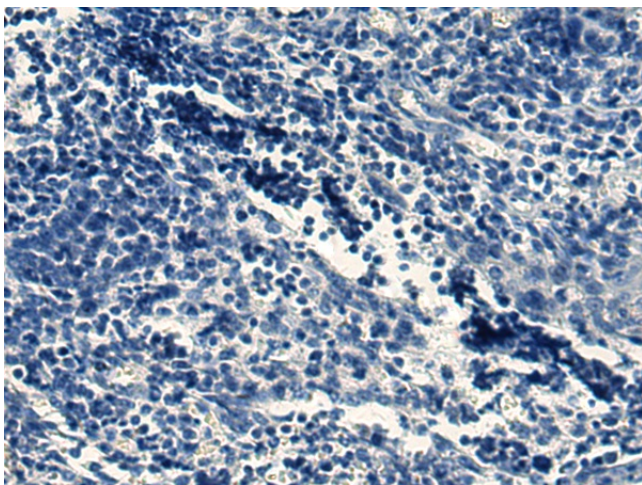
Immunohistochemistry of paraffin-embedded Human prostate cancer tissue using TA349357 (ITGB3 Antibody) at dilution 1/150 (Original magnification: ×200)



Immunohistochemistry of paraffin-embedded Human prostate cancer tissue using TA349357 (ITGB3 Antibody) at dilution 1/150, treated with fusion protein. (Original magnification: x200)



Immunohistochemistry of paraffin-embedded Human tonsil tissue using TA349357 (ITGB3 Antibody) at dilution 1/150 (Original magnification: x200)



Immunohistochemistry of paraffin-embedded Human tonsil tissue using TA349357 (ITGB3 Antibody) at dilution 1/150, treated with fusion protein. (Original magnification: x200)