

## Product datasheet for **TA349354**

### ING2 Rabbit Polyclonal Antibody

#### Product data:

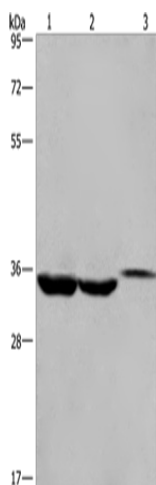
Product Type:	Primary Antibodies
Applications:	IHC, WB
Recommended Dilution:	WB: 500-2000 WB positive control: Lovo cells, human liver cancer tissue and mouse kidney tissue IHC: 50-200 Positive control: Human thyroid cancer Predicted cell location: Nucleus or Cytoplasm
Reactivity:	Human, Mouse
Host:	Rabbit
Isotype:	IgG
Clonality:	Polyclonal
Immunogen:	Fusion protein of human ING2
Formulation:	pH7.4 PBS, 0.05% NaN <sub>3</sub> , 40% Glycerol
Concentration:	lot specific
Purification:	Antigen affinity purification
Conjugation:	Unconjugated
Storage:	Store at -20°C as received.
Stability:	Stable for 12 months from date of receipt.
Predicted Protein Size:	33 kDa
Gene Name:	inhibitor of growth family member 2
Database Link:	<a href="#">NP_001555</a> <a href="#">Entrez Gene 69260 Mouse</a> <a href="#">Entrez Gene 3622 Human</a> <a href="#">Q9H160</a>
Background:	This gene is a member of the inhibitor of growth (ING) family. Members of the ING family associate with and modulate the activity of histone acetyltransferase (HAT) and histone deacetylase (HDAC) complexes and function in DNA repair and apoptosis
Synonyms:	ING1L; p33ING2



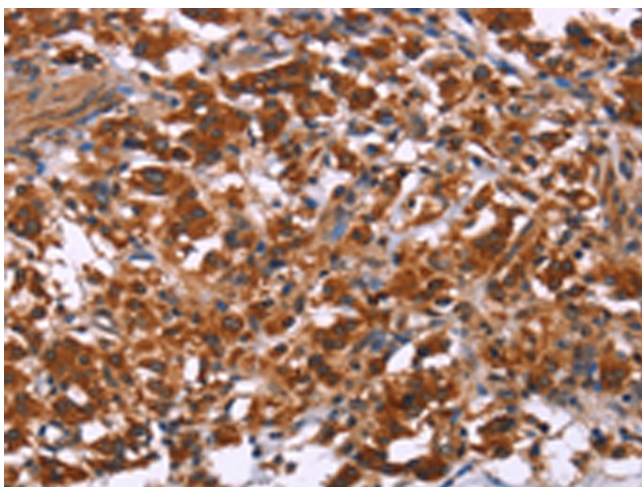
[View online »](#)

Protein Families: Druggable Genome, Transcription Factors

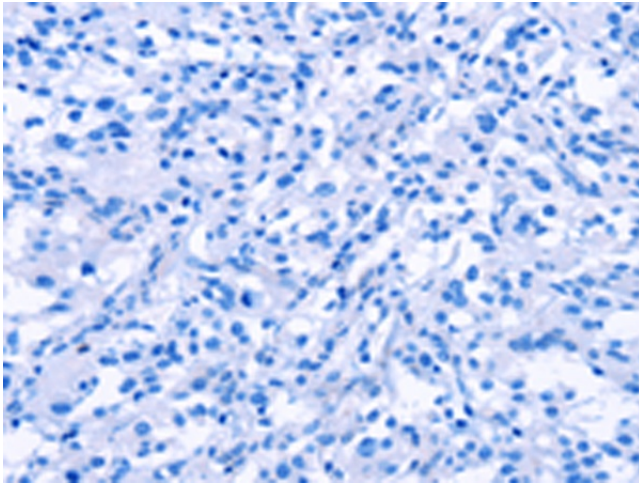
### Product images:



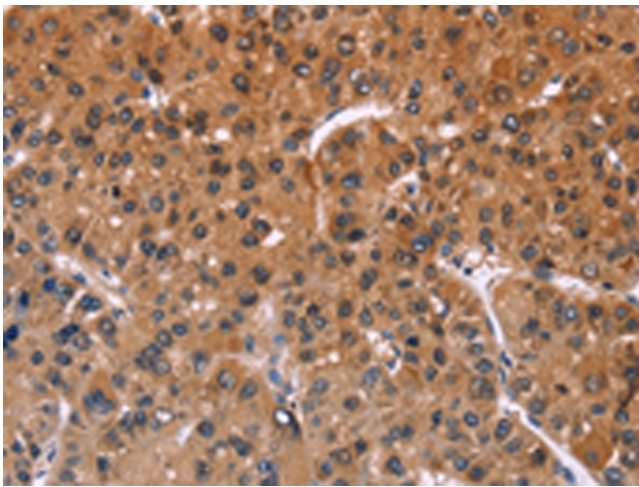
Gel: 10%SDS-PAGE  
Lysate: 40  $\mu$ g  
Lane 1-3: Lovo cells  
human liver cancer tissue  
mouse kidney tissue  
Primary antibody: TA349354 (ING2 Antibody) at dilution 1/425  
Secondary antibody: Goat anti rabbit IgG at 1/8000 dilution  
Exposure time: 40 seconds



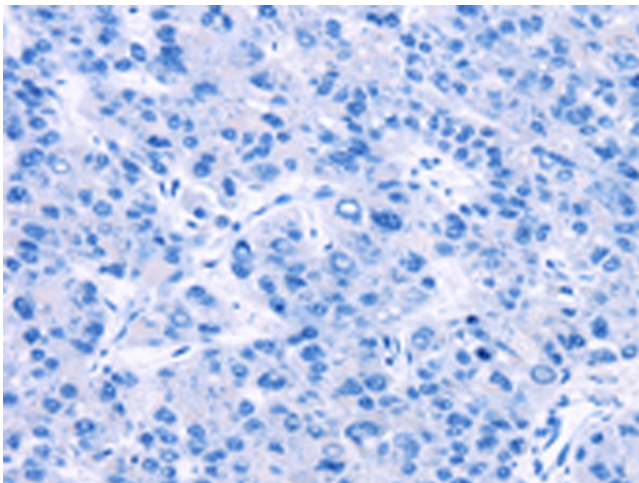
Immunohistochemistry of paraffin-embedded Human thyroid cancer tissue using TA349354 (ING2 Antibody) at dilution 1/40 (Original magnification:  $\times$ 200)



Immunohistochemistry of paraffin-embedded Human thyroid cancer tissue using TA349354 (ING2 Antibody) at dilution 1/40, treated with fusion protein. (Original magnification:  $\times 200$ )



Immunohistochemistry of paraffin-embedded Human liver cancer tissue using TA349354 (ING2 Antibody) at dilution 1/40 (Original magnification:  $\times 200$ )



Immunohistochemistry of paraffin-embedded Human liver cancer tissue using TA349354 (ING2 Antibody) at dilution 1/40, treated with fusion protein. (Original magnification:  $\times 200$ )