

## Product datasheet for **TA349353S**

### Integrin Linked Kinase (ILK) Rabbit Polyclonal Antibody

#### Product data:

Product Type:	Primary Antibodies
Applications:	IHC, WB
Recommended Dilution:	WB: 500-2000 WB positive control: Mouse heart tissue and hela cells IHC: 100-300 Positive control: Human liver cancer Predicted cell location: Cytoplasm
Reactivity:	Human, Mouse, Rat
Host:	Rabbit
Isotype:	IgG
Clonality:	Polyclonal
Immunogen:	Fusion protein of human ILK
Formulation:	pH7.4 PBS, 0.05% NaN <sub>3</sub> , 40% Glycerol
Purification:	Antigen affinity purification
Conjugation:	Unconjugated
Storage:	Store at -20°C as received.
Stability:	Stable for 12 months from date of receipt.
Predicted Protein Size:	51 kDa
Gene Name:	integrin linked kinase
Database Link:	<a href="#">NP_004508</a> <a href="#">Entrez Gene 16202 Mouse</a> <a href="#">Entrez Gene 170922 Rat</a> <a href="#">Entrez Gene 3611 Human</a> <a href="#">Q13418</a>

**Background:** This gene encodes a protein with a kinase-like domain and four ankyrin-like repeats. The encoded protein associates at the cell membrane with the cytoplasmic domain of beta integrins, where it regulates integrin-mediated signal transduction. Activity of this protein is important in the epithelial to mesenchymal transition, and over-expression of this gene is implicated in tumor growth and metastasis. Alternative splicing results in multiple transcript variants.



[View online »](#)

**Synonyms:** HEL-S-28; ILK-1; ILK-2; P59; p59ILK

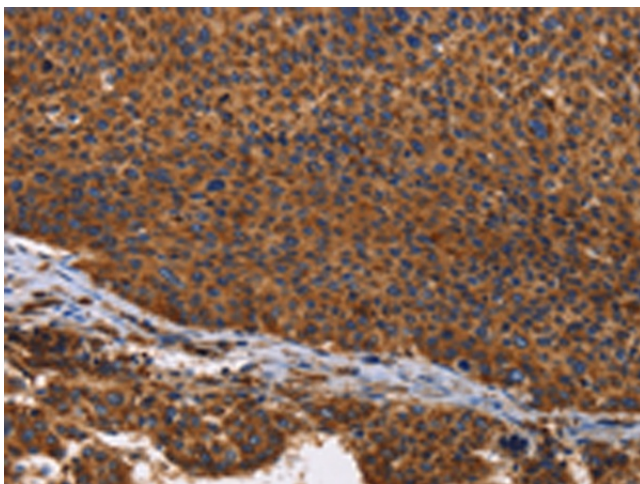
**Protein Families:** Druggable Genome, Protein Kinase

**Protein Pathways:** Endometrial cancer, Focal adhesion, PPAR signaling pathway

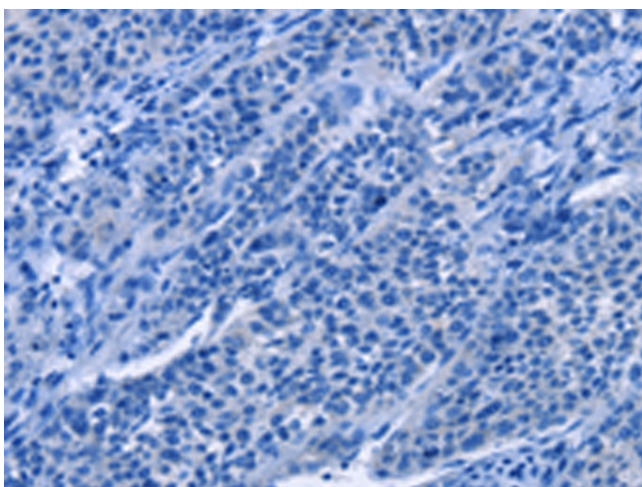
**Product images:**



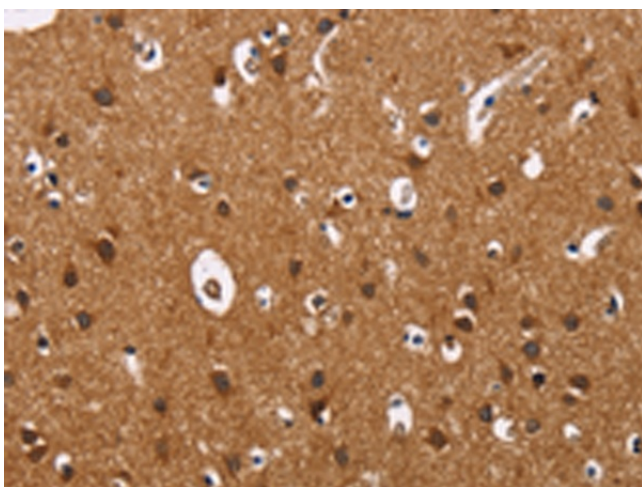
Gel: 8%SDS-PAGE  
 Lysate: 40 µg  
 Lane 1-2: Mouse heart tissue  
 hela cells  
 Primary antibody: [TA349353] (ILK Antibody) at  
 dilution 1/600  
 Secondary antibody: Goat anti rabbit IgG at  
 1/8000 dilution  
 Exposure time: 40 seconds



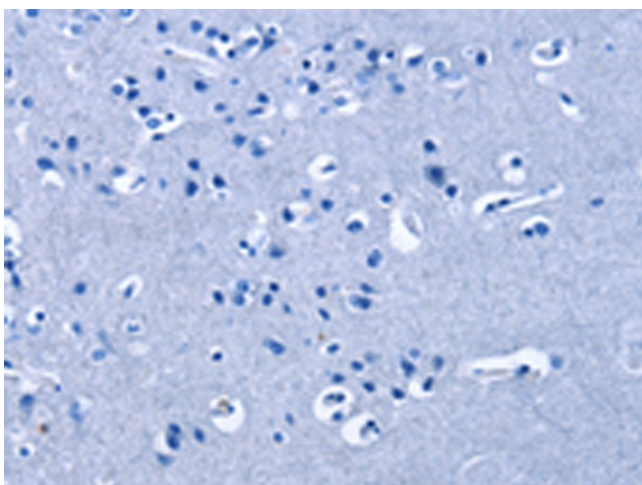
Immunohistochemistry of paraffin-embedded  
 Human liver cancer tissue using [TA349353] (ILK  
 Antibody) at dilution 1/60 (Original magnification:  
 ×200)



Immunohistochemistry of paraffin-embedded Human liver cancer tissue using [TA349353] (ILK Antibody) at dilution 1/60, treated with fusion protein. (Original magnification:  $\times 200$ )



Immunohistochemistry of paraffin-embedded Human brain tissue using [TA349353] (ILK Antibody) at dilution 1/60 (Original magnification:  $\times 200$ )



Immunohistochemistry of paraffin-embedded Human brain tissue using [TA349353] (ILK Antibody) at dilution 1/60, treated with fusion protein. (Original magnification:  $\times 200$ )