

Product datasheet for **TA349352**

IL1 alpha (IL1A) Rabbit Polyclonal Antibody

Product data:

Product Type:	Primary Antibodies
Applications:	IHC, WB
Recommended Dilution:	WB: 500-2000 WB positive control: Jurkat cells IHC: 100-300 Positive control: Human colon cancer Predicted cell location: Cytoplasm
Reactivity:	Human
Host:	Rabbit
Isotype:	IgG
Clonality:	Polyclonal
Immunogen:	Fusion protein of human IL1A
Formulation:	pH7.4 PBS, 0.05% NaN ₃ , 40% Glycerol
Concentration:	lot specific
Purification:	Antigen affinity purification
Conjugation:	Unconjugated
Storage:	Store at -20°C as received.
Stability:	Stable for 12 months from date of receipt.
Predicted Protein Size:	31 kDa
Gene Name:	interleukin 1 alpha
Database Link:	NP_000566 Entrez Gene 3552 Human P01583



[View online »](#)

Background:

The protein encoded by this gene is a member of the interleukin 1 cytokine family. This cytokine is a pleiotropic cytokine involved in various immune responses, inflammatory processes, and hematopoiesis. This cytokine is produced by monocytes and macrophages as a proprotein, which is proteolytically processed and released in response to cell injury, and thus induces apoptosis. This gene and eight other interleukin 1 family genes form a cytokine gene cluster on chromosome 2. It has been suggested that the polymorphism of these genes is associated with rheumatoid arthritis and Alzheimer's disease

Synonyms:

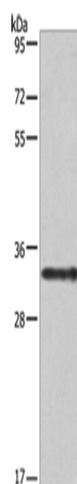
IL-1A; IL1; IL1-ALPHA; IL1F1

Protein Families:

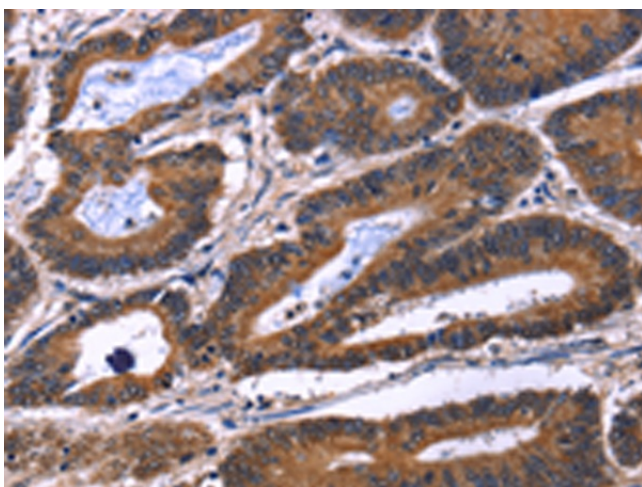
Druggable Genome, Secreted Protein

Protein Pathways:

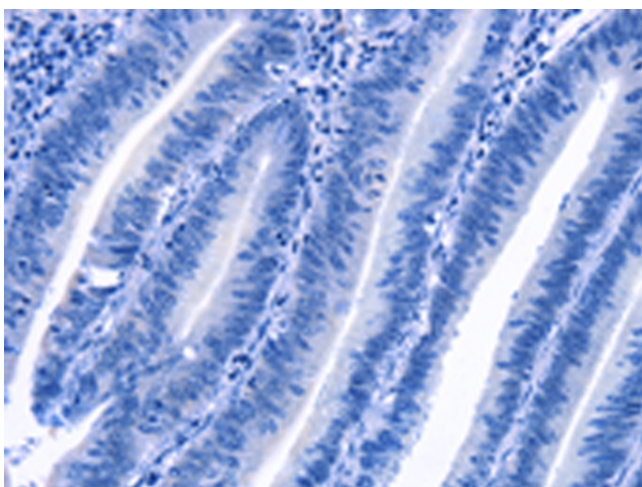
Apoptosis, Cytokine-cytokine receptor interaction, Graft-versus-host disease, Hematopoietic cell lineage, MAPK signaling pathway, Prion diseases, Type I diabetes mellitus

Product images:

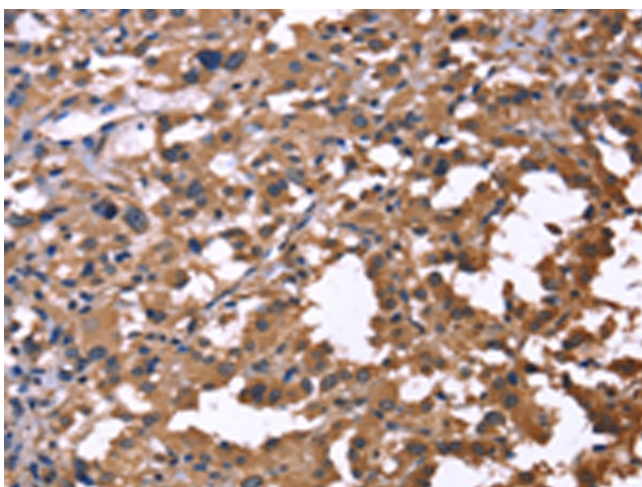
Gel: 8%SDS-PAGE
Lysate: 40 µg
Lane: Jurkat cells
Primary antibody: TA349352 (IL1A Antibody) at dilution 1/666
Secondary antibody: Goat anti rabbit IgG at 1/8000 dilution
Exposure time: 20 seconds



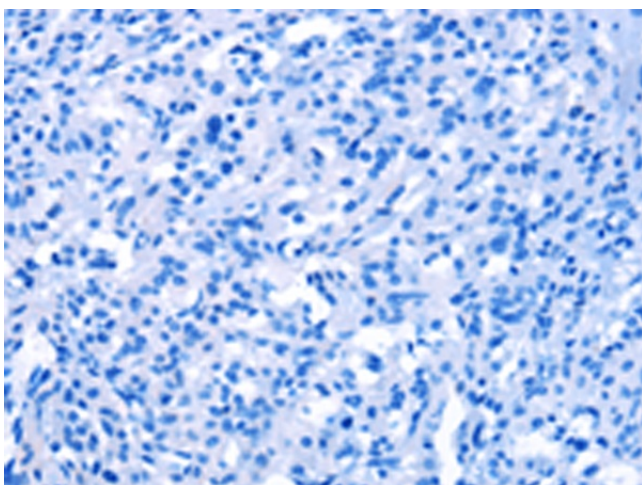
Immunohistochemistry of paraffin-embedded Human colon cancer tissue using TA349352 (IL1A Antibody) at dilution 1/60 (Original magnification: ×200)



Immunohistochemistry of paraffin-embedded Human colon cancer tissue using TA349352 (IL1A Antibody) at dilution 1/60, treated with fusion protein. (Original magnification: $\times 200$)



Immunohistochemistry of paraffin-embedded Human thyroid cancer tissue using TA349352 (IL1A Antibody) at dilution 1/60 (Original magnification: $\times 200$)



Immunohistochemistry of paraffin-embedded Human thyroid cancer tissue using TA349352 (IL1A Antibody) at dilution 1/60, treated with fusion protein. (Original magnification: $\times 200$)