

Product datasheet for **TA349350**

IGSF8 Rabbit Polyclonal Antibody

Product data:

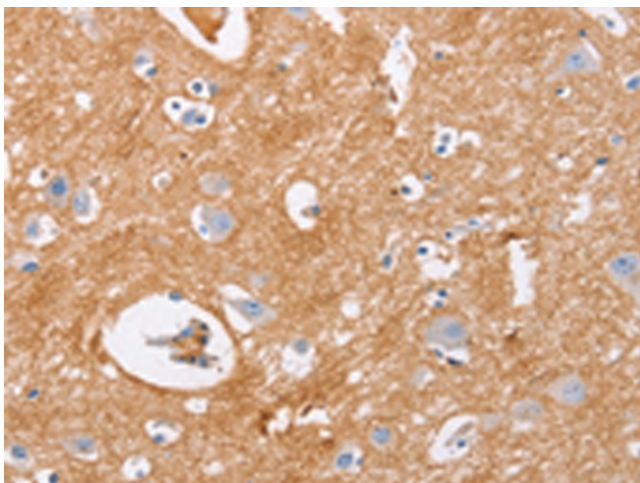
Product Type:	Primary Antibodies
Applications:	IHC
Recommended Dilution:	IHC: 15-50 Positive control: Human brain Predicted cell location: Cytoplasm
Reactivity:	Human, Mouse
Host:	Rabbit
Isotype:	IgG
Clonality:	Polyclonal
Immunogen:	Fusion protein of human IGSF8
Formulation:	pH7.4 PBS, 0.05% NaN3, 40% Glycerol
Concentration:	lot specific
Purification:	Antigen affinity purification
Conjugation:	Unconjugated
Storage:	Store at -20°C as received.
Stability:	Stable for 12 months from date of receipt.
Gene Name:	immunoglobulin superfamily member 8
Database Link:	NP_443100 Entrez Gene 140559 Mouse Entrez Gene 93185 Human Q969P0
Background:	This gene encodes a member the EWI subfamily of the immunoglobulin protein superfamily. Members of this family contain a single transmembrane domain, an EWI (Glu-Trp-Ile)-motif and a variable number of immunoglobulin domains. This protein interacts with the tetraspanins CD81 and CD9 and may regulate their role in certain cellular functions including cell migration and viral infection. The encoded protein may also function as a tumor suppressor by inhibiting the proliferation of certain cancers. Alternate splicing results in multiple transcript variants that encode the same protein.
Synonyms:	CD81P3; CD316; EWI-2; EWI2; KCT-4; LIR-D1; PGRL



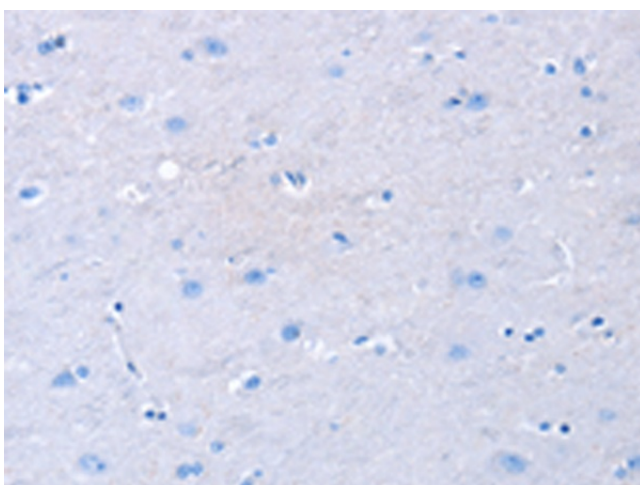
[View online »](#)

Protein Families: Transmembrane

Product images:



Immunohistochemistry of paraffin-embedded Human brain tissue using TA349350 (IGSF8 Antibody) at dilution 1/15 (Original magnification: $\times 200$)



Immunohistochemistry of paraffin-embedded Human brain tissue using TA349350 (IGSF8 Antibody) at dilution 1/15, treated with fusion protein. (Original magnification: $\times 200$)