

Product datasheet for **TA349349S**

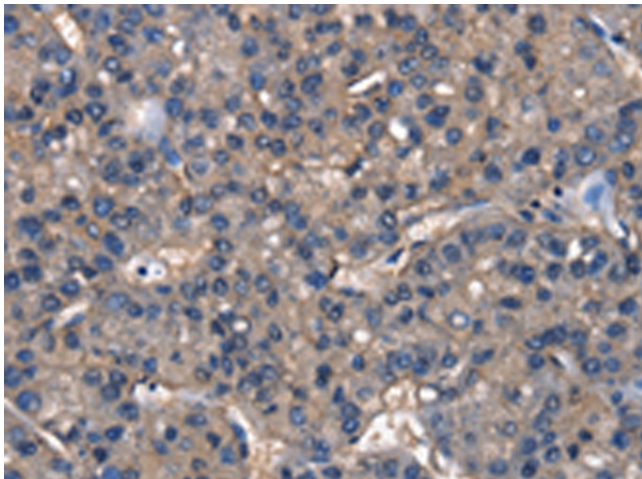
IGFBP5 Rabbit Polyclonal Antibody

Product data:

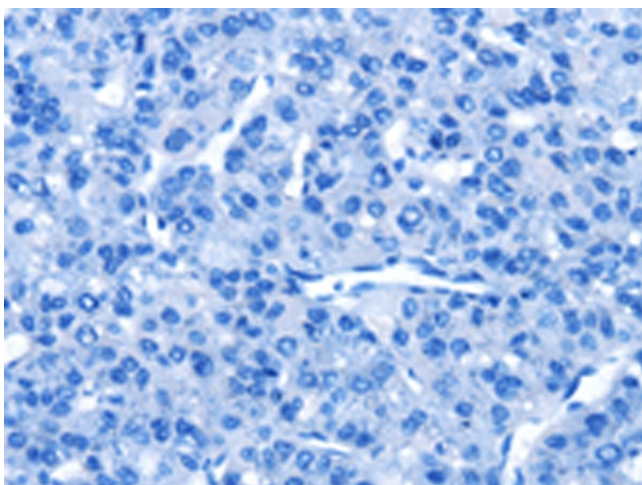
| | |
|-----------------------|---------------------------------------------------------------------------------------------------------------------------------------------------------------------------------------------------------------------------------------------------------------------------------------------------------------------------------------------------|
| Product Type: | Primary Antibodies |
| Applications: | IHC |
| Recommended Dilution: | IHC: 25-100 Positive control: Human liver cancer Predicted cell location: Cytoplasm |
| Reactivity: | Human, Mouse, Rat |
| Host: | Rabbit |
| Isotype: | IgG |
| Clonality: | Polyclonal |
| Immunogen: | Fusion protein of human IGFBP5 |
| Formulation: | pH7.4 PBS, 0.05% NaN ₃ , 40% Glycerol |
| Purification: | Antigen affinity purification |
| Conjugation: | Unconjugated |
| Storage: | Store at -20°C as received. |
| Stability: | Stable for 12 months from date of receipt. |
| Gene Name: | insulin like growth factor binding protein 5 |
| Database Link: | NP_000590 Entrez Gene 16011 Mouse Entrez Gene 25285 Rat Entrez Gene 3488 Human P24593 |
| Background: | Insulin-like growth factor-binding protein 5 is a protein that in humans is encoded by the IGFBP5 gene. IGF-binding proteins prolong the half-life of the IGFs and have been shown to either inhibit or stimulate the growth promoting effects of the IGFs on cell culture. They alter the interaction of IGFs with their cell surface receptors. |
| Synonyms: | IBP5 |
| Protein Families: | Druggable Genome, Secreted Protein |



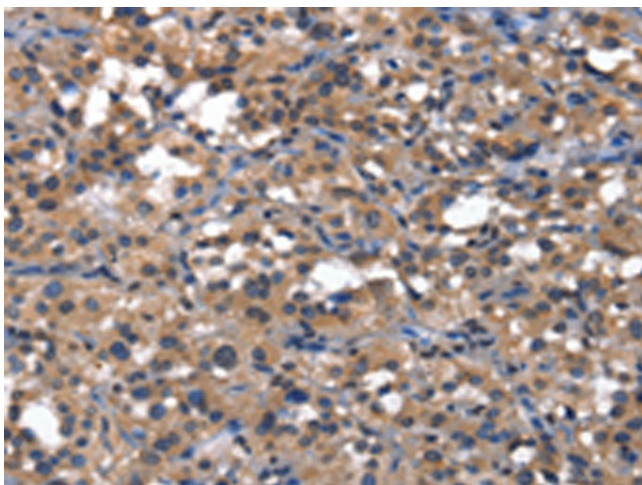
[View online »](#)

Product images:

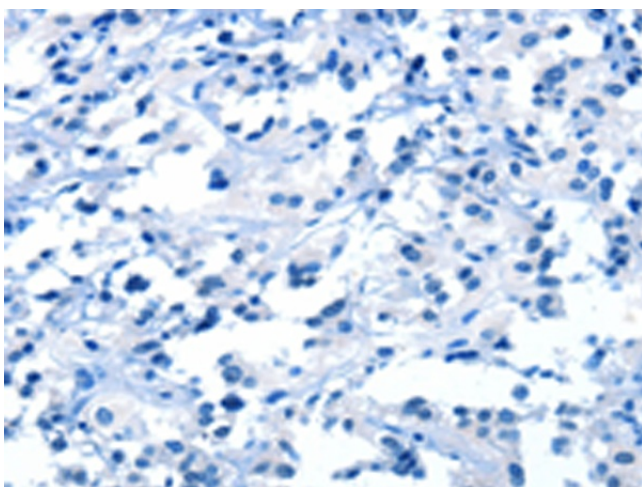
Immunohistochemistry of paraffin-embedded Human liver cancer tissue using [TA349349] (IGFBP5 Antibody) at dilution 1/25 (Original magnification: ×200)



Immunohistochemistry of paraffin-embedded Human liver cancer tissue using [TA349349] (IGFBP5 Antibody) at dilution 1/25, treated with fusion protein. (Original magnification: ×200)



Immunohistochemistry of paraffin-embedded Human thyroid cancer tissue using [TA349349] (IGFBP5 Antibody) at dilution 1/25 (Original magnification: $\times 200$)



Immunohistochemistry of paraffin-embedded Human thyroid cancer tissue using [TA349349] (IGFBP5 Antibody) at dilution 1/25, treated with fusion protein. (Original magnification: $\times 200$)