

## Product datasheet for **TA349347**

### Hsp22 (HSPB8) Rabbit Polyclonal Antibody

#### Product data:

Product Type:	Primary Antibodies
Applications:	IHC
Recommended Dilution:	IHC: 50-200 Positive control: Human cervical cancer Predicted cell location: Cytoplasm
Reactivity:	Human, Mouse, Rat
Host:	Rabbit
Isotype:	IgG
Clonality:	Polyclonal
Immunogen:	Fusion protein of human HSPB8
Formulation:	pH7.4 PBS, 0.05% NaN <sub>3</sub> , 40% Glycerol
Concentration:	lot specific
Purification:	Antigen affinity purification
Conjugation:	Unconjugated
Storage:	Store at -20°C as received.
Stability:	Stable for 12 months from date of receipt.
Gene Name:	heat shock protein family B (small) member 8
Database Link:	<a href="#">NP_055180</a> <a href="#">Entrez Gene 80888 Mouse</a> <a href="#">Entrez Gene 113906 Rat</a> <a href="#">Entrez Gene 26353 Human</a> <a href="#">Q9UJY1</a>

**Background:** The protein encoded by this gene belongs to the superfamily of small heat-shock proteins containing a conservative alpha-crystallin domain at the C-terminal part of the molecule. The expression of this gene is induced by estrogen in estrogen receptor-positive breast cancer cells, and this protein also functions as a chaperone in association with Bag3, a stimulator of macroautophagy. Thus, this gene appears to be involved in regulation of cell proliferation, apoptosis, and carcinogenesis, and mutations in this gene have been associated with different neuromuscular diseases, including Charcot-Marie-Tooth disease.

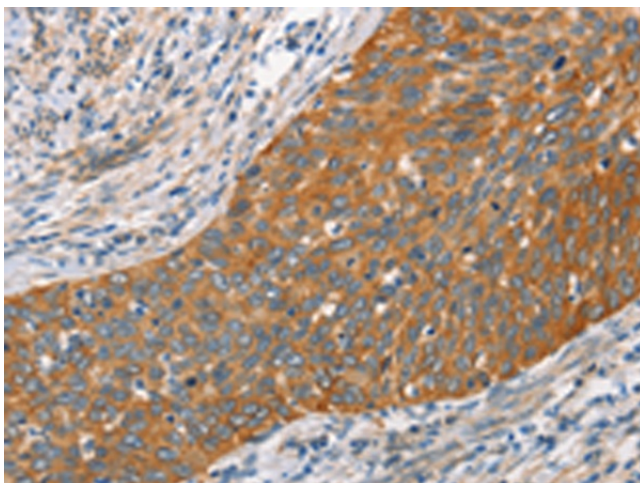
**Synonyms:** CMT2L; DHMN2; E2IG1; H11; HMN2; HMN2A; HSP22



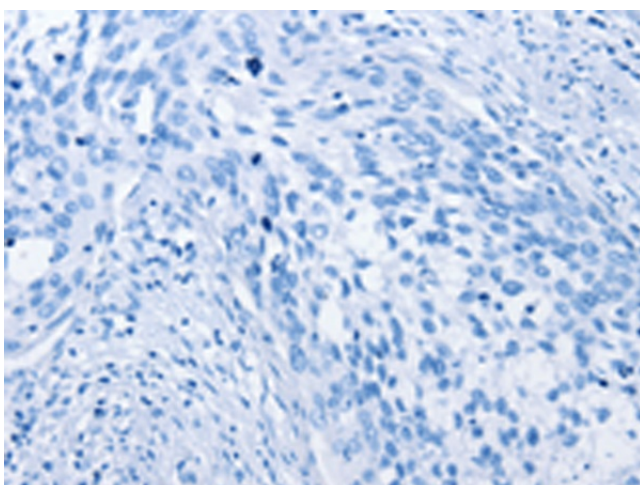
[View online »](#)

Protein Families: Druggable Genome, Protein Kinase

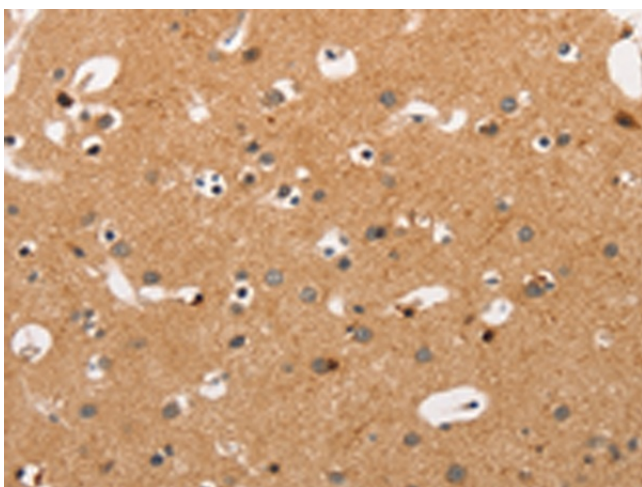
### Product images:



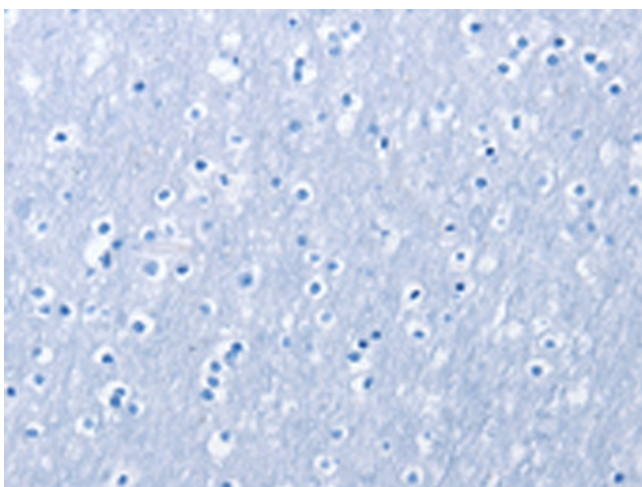
Immunohistochemistry of paraffin-embedded Human cervical cancer tissue using TA349347 (HSPB8 Antibody) at dilution 1/45 (Original magnification:  $\times 200$ )



Immunohistochemistry of paraffin-embedded Human cervical cancer tissue using TA349347 (HSPB8 Antibody) at dilution 1/45, treated with fusion protein. (Original magnification:  $\times 200$ )



Immunohistochemistry of paraffin-embedded Human brain tissue using TA349347 (HSPB8 Antibody) at dilution 1/45 (Original magnification: ×200)



Immunohistochemistry of paraffin-embedded Human brain tissue using TA349347 (HSPB8 Antibody) at dilution 1/45, treated with fusion protein. (Original magnification: ×200)