

Product datasheet for **TA349330S**

GPA33 Rabbit Polyclonal Antibody

Product data:

Product Type:	Primary Antibodies
Applications:	IHC, WB
Recommended Dilution:	WB: 500-2000 WB positive control: 293T and human colon cancer tissue, 231 cells IHC: 50-200 Positive control: Human colon cancer Predicted cell location: Cytoplasm and membrane
Reactivity:	Human
Host:	Rabbit
Isotype:	IgG
Clonality:	Polyclonal
Immunogen:	Fusion protein of human GPA33
Formulation:	pH7.4 PBS, 0.05% NaN ₃ , 40% Glycerol
Purification:	Antigen affinity purification
Conjugation:	Unconjugated
Storage:	Store at -20°C as received.
Stability:	Stable for 12 months from date of receipt.
Predicted Protein Size:	36 kDa
Gene Name:	glycoprotein A33
Database Link:	NP_005805 Entrez Gene 10223 Human Q99795



[View online »](#)

Background:

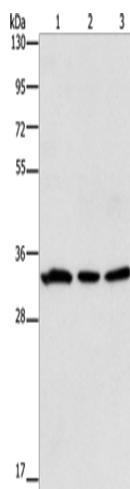
The glycoprotein encoded by this gene is a cell surface antigen that is expressed in greater than 95% of human colon cancers. The open reading frame encodes a 319-amino acid polypeptide having a putative secretory signal sequence and 3 potential glycosylation sites. The predicted mature protein has a 213-amino acid extracellular region, a single transmembrane domain, and a 62-amino acid intracellular tail. The sequence of the extracellular region contains 2 domains characteristic of the CD2 subgroup of the immunoglobulin (Ig) superfamily.

Synonyms:

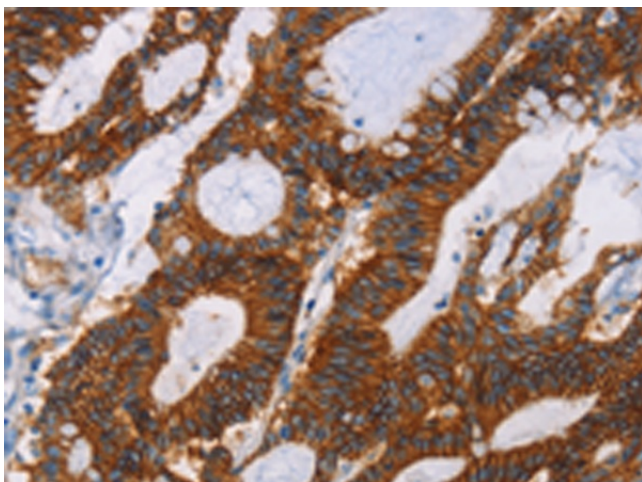
A33

Protein Families:

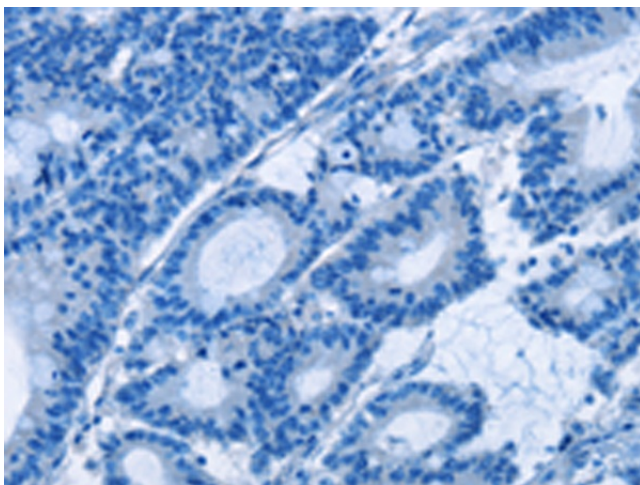
Druggable Genome, Transmembrane

Product images:

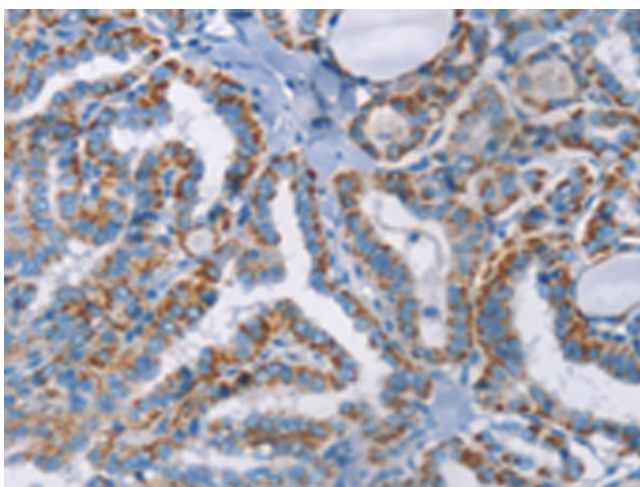
Gel: 15%SDS-PAGE
Lysate: 40 µg
Lane 1-3: 293T cells
human colon cancer tissue
231 cells
Primary antibody: [TA349330] (GPA33 Antibody)
at dilution 1/600
Secondary antibody: Goat anti rabbit IgG at
1/8000 dilution
Exposure time: 5 seconds



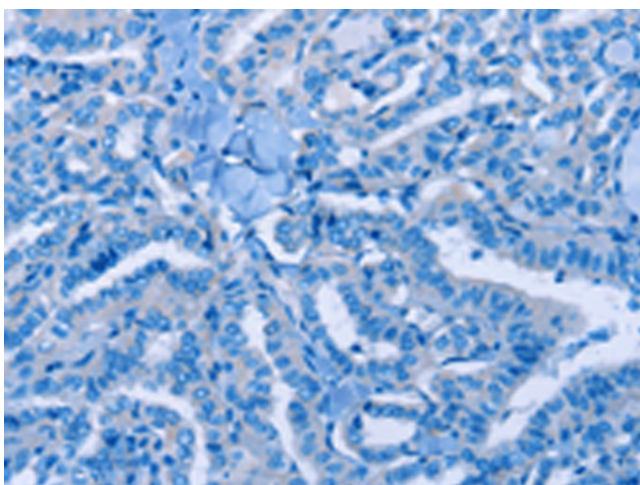
Immunohistochemistry of paraffin-embedded
Human colon cancer tissue using [TA349330]
(GPA33 Antibody) at dilution 1/30 (Original
magnification: ×200)



Immunohistochemistry of paraffin-embedded Human colon cancer tissue using [TA349330] (GPA33 Antibody) at dilution 1/30, treated with fusion protein. (Original magnification: $\times 200$)



Immunohistochemistry of paraffin-embedded Human thyroid cancer tissue using [TA349330] (GPA33 Antibody) at dilution 1/30 (Original magnification: $\times 200$)



Immunohistochemistry of paraffin-embedded Human thyroid cancer tissue using [TA349330] (GPA33 Antibody) at dilution 1/30, treated with fusion protein. (Original magnification: $\times 200$)