

## Product datasheet for **TA349326S**

### GRO gamma (CXCL3) Rabbit Polyclonal Antibody

#### Product data:

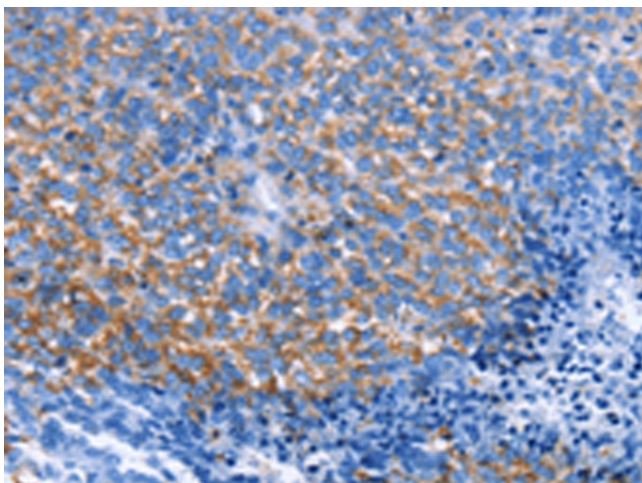
Product Type:	Primary Antibodies
Applications:	IHC
Recommended Dilution:	IHC: 15-50 Positive control: Human ovarian cancer Predicted cell location: Cytoplasm
Reactivity:	Human
Host:	Rabbit
Isotype:	IgG
Clonality:	Polyclonal
Immunogen:	Fusion protein of human CXCL3
Formulation:	pH7.4 PBS, 0.05% NaN <sub>3</sub> , 40% Glycerol
Purification:	Antigen affinity purification
Conjugation:	Unconjugated
Storage:	Store at -20°C as received.
Stability:	Stable for 12 months from date of receipt.
Gene Name:	C-X-C motif chemokine ligand 3
Database Link:	<a href="#">NP_002081</a> <a href="#">Entrez Gene 2921 Human</a> <a href="#">P19876</a>
Background:	Chemokine (C-X-C motif) ligand 3 (CXCL3) is a small cytokine belonging to the CXC chemokine family that is also known as GRO3 oncogene (GRO3), GRO protein gamma (GROγ) and macrophage inflammatory protein-2-beta (MIP2β). CXCL3 controls migration and adhesion of monocytes and mediates its effects on its target cell by interacting with a cell surface chemokine receptor called CXCR2. More recently, it has been shown that Cxcl3 regulates cell autonomously the migration of the precursors of cerebellar granule neurons toward the internal layers of cerebellum, during the morphogenesis of cerebellum.
Synonyms:	CINC-2b; GRO3; GROγ; MIP-2β; MIP2B; SCYB3
Protein Families:	Druggable Genome, Secreted Protein



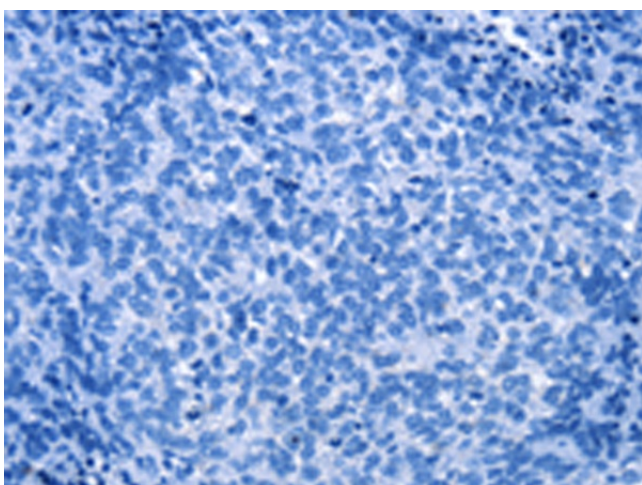
[View online »](#)

Protein Pathways: Chemokine signaling pathway, Cytokine-cytokine receptor interaction

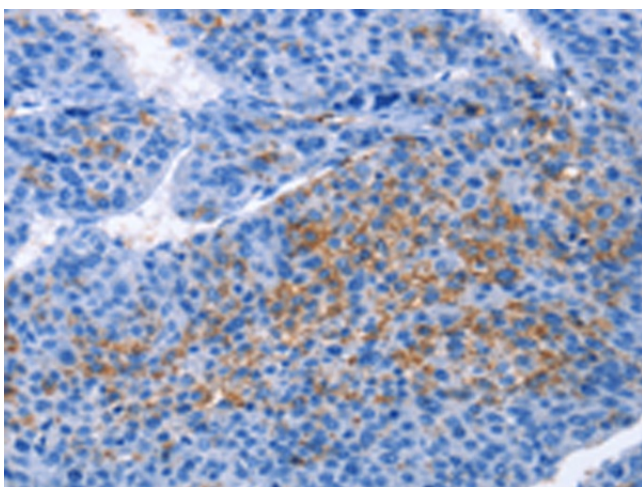
**Product images:**



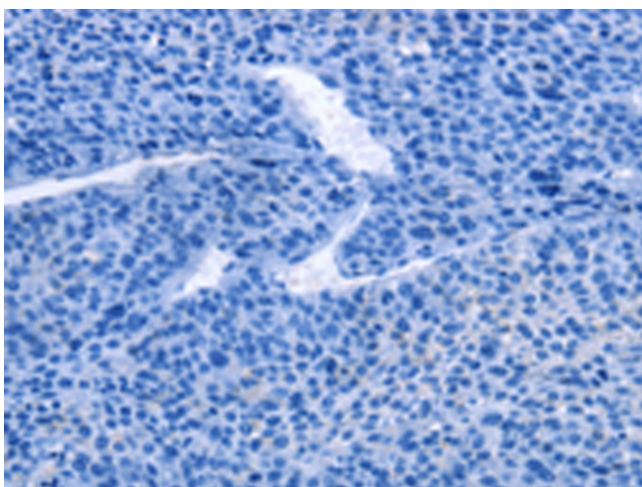
Immunohistochemistry of paraffin-embedded Human ovarian cancer tissue using [TA349326] (CXCL3 Antibody) at dilution 1/25 (Original magnification:  $\times 200$ )



Immunohistochemistry of paraffin-embedded Human ovarian cancer tissue using [TA349326] (CXCL3 Antibody) at dilution 1/25, treated with fusion protein. (Original magnification:  $\times 200$ )



Immunohistochemistry of paraffin-embedded Human liver cancer tissue using [TA349326] (CXCL3 Antibody) at dilution 1/25 (Original magnification:  $\times 200$ )



Immunohistochemistry of paraffin-embedded Human liver cancer tissue using [TA349326] (CXCL3 Antibody) at dilution 1/25, treated with fusion protein. (Original magnification:  $\times 200$ )