

## Product datasheet for **TA349323S**

### GNB5 Rabbit Polyclonal Antibody

#### Product data:

Product Type:	Primary Antibodies
Applications:	IHC, WB
Recommended Dilution:	WB: 200-1000 WB positive control: Human fetal brain and mouse heart tissue IHC: 25-100 Positive control: Human brain Predicted cell location: Cytoplasm
Reactivity:	Human, Mouse, Rat
Host:	Rabbit
Isotype:	IgG
Clonality:	Polyclonal
Immunogen:	Fusion protein of human GNB5
Formulation:	pH7.4 PBS, 0.05% NaN <sub>3</sub> , 40% Glycerol
Purification:	Antigen affinity purification
Conjugation:	Unconjugated
Storage:	Store at -20°C as received.
Stability:	Stable for 12 months from date of receipt.
Predicted Protein Size:	44 kDa
Gene Name:	G protein subunit beta 5
Database Link:	<a href="#">NP_057278</a> <a href="#">Entrez Gene 14697 MouseEntrez Gene 83579 RatEntrez Gene 10681 Human O14775</a>

**Background:** Heterotrimeric guanine nucleotide-binding proteins (G proteins), which integrate signals between receptors and effector proteins, are composed of an alpha, a beta, and a gamma subunit. These subunits are encoded by families of related genes. This gene encodes a beta subunit. Beta subunits are important regulators of alpha subunits, as well as of certain signal transduction receptors and effectors. Alternatively spliced transcript variants encoding different isoforms exist.



[View online »](#)

Synonyms: GB5

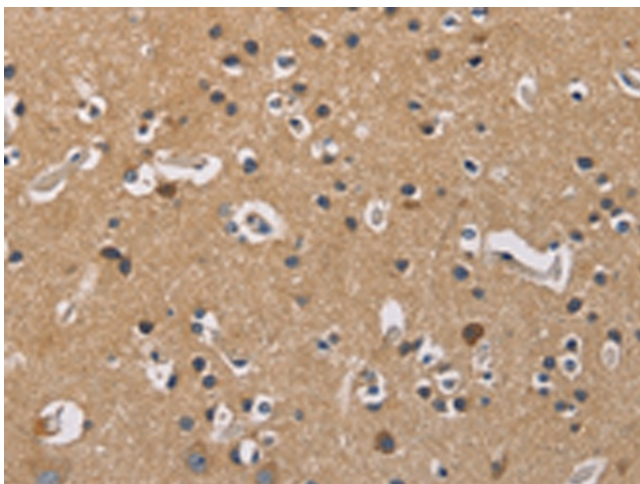
Protein Families: Druggable Genome

Protein Pathways: Chemokine signaling pathway

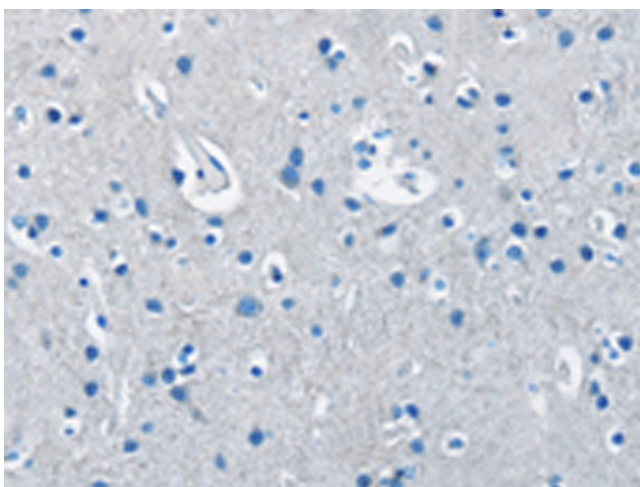
### Product images:



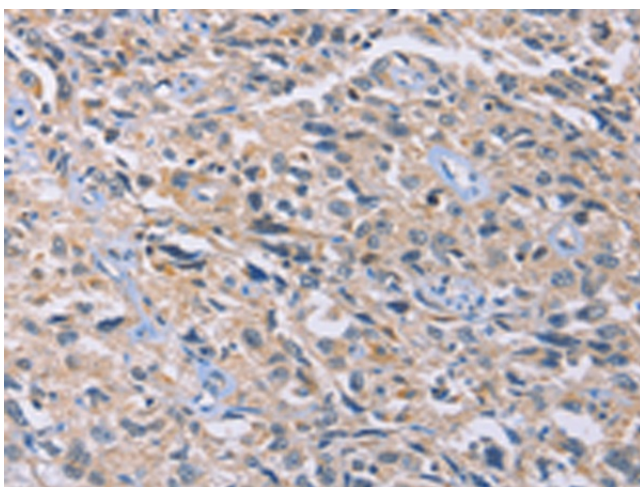
Gel: 15%SDS-PAGE  
Lysate: 40  $\mu$ g  
Lane 1-2: Human fetal brain tissue  
mouse heart tissue  
Primary antibody: [TA349323] (GNB5 Antibody) at  
dilution 1/550  
Secondary antibody: Goat anti rabbit IgG at  
1/8000 dilution  
Exposure time: 1 second



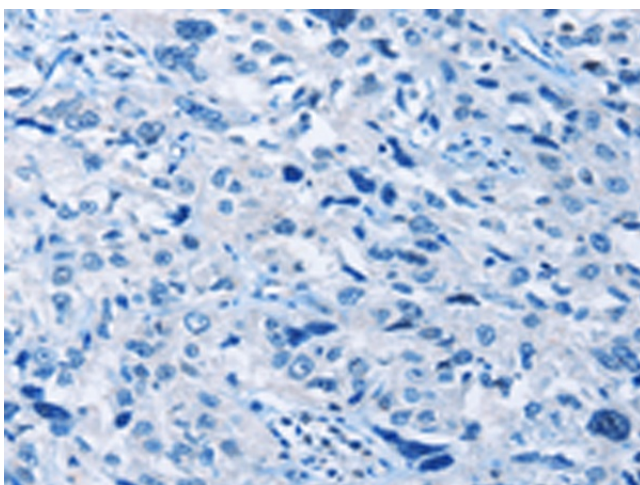
Immunohistochemistry of paraffin-embedded  
Human brain tissue using [TA349323] (GNB5  
Antibody) at dilution 1/20 (Original magnification:  
 $\times$ 200)



Immunohistochemistry of paraffin-embedded Human brain tissue using [TA349323] (GNB5 Antibody) at dilution 1/20, treated with fusion protein. (Original magnification: x200)



Immunohistochemistry of paraffin-embedded Human esophagus cancer tissue using [TA349323] (GNB5 Antibody) at dilution 1/20 (Original magnification: x200)



Immunohistochemistry of paraffin-embedded Human esophagus cancer tissue using [TA349323] (GNB5 Antibody) at dilution 1/20, treated with fusion protein. (Original magnification: x200)