

## Product datasheet for **TA349318S**

### FGL1 Rabbit Polyclonal Antibody

#### Product data:

Product Type:	Primary Antibodies
Applications:	IHC, WB
Recommended Dilution:	WB: 500-2000 WB positive control: Human fetal liver tissue IHC: 50-200 Positive control: Human liver cancer Predicted cell location: Cytoplasm
Reactivity:	Human, Mouse, Rat
Host:	Rabbit
Isotype:	IgG
Clonality:	Polyclonal
Immunogen:	Fusion protein of human FGL1
Formulation:	pH7.4 PBS, 0.05% NaN <sub>3</sub> , 40% Glycerol
Purification:	Antigen affinity purification
Conjugation:	Unconjugated
Storage:	Store at -20°C as received.
Stability:	Stable for 12 months from date of receipt.
Predicted Protein Size:	36 kDa
Gene Name:	fibrinogen like 1
Database Link:	<a href="#">NP_963846</a> <a href="#">Entrez Gene 234199 MouseEntrez Gene 246186 RatEntrez Gene 2267 Human Q08830</a>



[View online »](#)

**Background:**

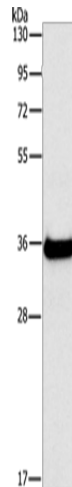
Fibrinogen-like 1 is a member of the fibrinogen family. This protein is homologous to the carboxy terminus of the fibrinogen beta- and gamma- subunits which contains the four conserved cysteines of fibrinogens and fibrinogen related proteins. However, this protein lacks the platelet-binding site, cross-linking region and a thrombin-sensitive site which are necessary for fibrin clot formation. This protein may play a role in the development of hepatocellular carcinomas. Four alternatively spliced transcript variants encoding the same protein exist for this gene.

**Synonyms:**

HFREP1; HP-041; LFIRE-1; LFIRE1

**Protein Families:**

Druggable Genome, Secreted Protein

**Product images:**

Gel: 15%SDS-PAGE

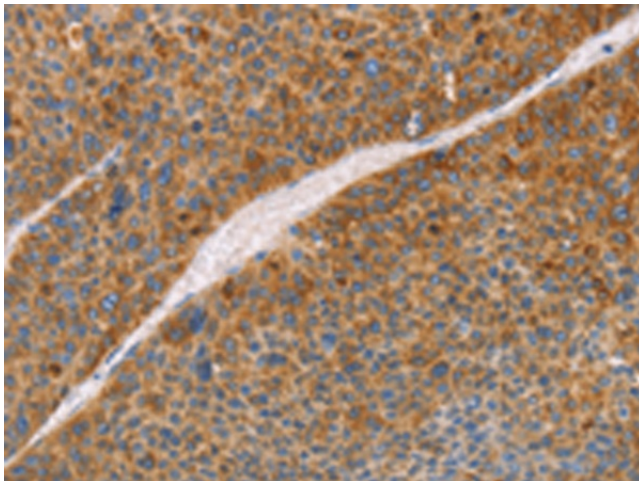
Lysate: 40 µg

Lane: Human fetal liver tissue

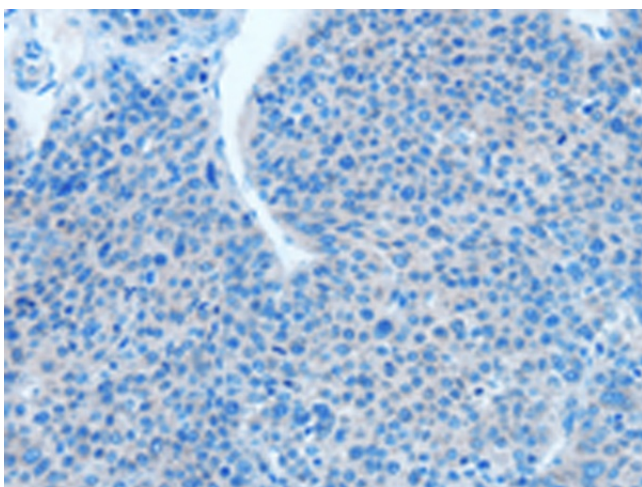
Primary antibody: [TA349318] (FGL1 Antibody) at dilution 1/500

Secondary antibody: Goat anti rabbit IgG at 1/8000 dilution

Exposure time: 2 seconds



Immunohistochemistry of paraffin-embedded Human liver cancer tissue using [TA349318] (FGL1 Antibody) at dilution 1/50 (Original magnification: ×200)



Immunohistochemistry of paraffin-embedded Human liver cancer tissue using [TA349318] (FGL1 Antibody) at dilution 1/50, treated with fusion protein. (Original magnification: ×200)