

Product datasheet for **TA349307**

ERK5 (MAPK7) Rabbit Polyclonal Antibody

Product data:

Product Type:	Primary Antibodies
Applications:	IHC, WB
Recommended Dilution:	WB: 500-2000 WB positive control: Human fetal muscle tissue, A172 and K562 cells IHC: 30-150 Positive control: Human breast cancer Predicted cell location: Cytoplasm
Reactivity:	Human, Mouse, Rat
Host:	Rabbit
Isotype:	IgG
Clonality:	Polyclonal
Immunogen:	Fusion protein of human MAPK7
Formulation:	pH7.4 PBS, 0.05% NaN ₃ , 40% Glycerol
Concentration:	lot specific
Purification:	Antigen affinity purification
Conjugation:	Unconjugated
Storage:	Store at -20°C as received.
Stability:	Stable for 12 months from date of receipt.
Predicted Protein Size:	88 kDa
Gene Name:	mitogen-activated protein kinase 7
Database Link:	NP_620601 Entrez Gene 23939 Mouse Entrez Gene 114509 Rat Entrez Gene 5598 Human Q13164



[View online »](#)

Background:

The protein encoded by this gene is a member of the MAP kinase family. MAP kinases act as an integration point for multiple biochemical signals, and are involved in a wide variety of cellular processes such as proliferation, differentiation, transcription regulation and development. This kinase is specifically activated by mitogen-activated protein kinase kinase 5 (MAP2K5/MEK5). It is involved in the downstream signaling processes of various receptor molecules including receptor type kinases, and G protein-coupled receptors.

Synonyms:

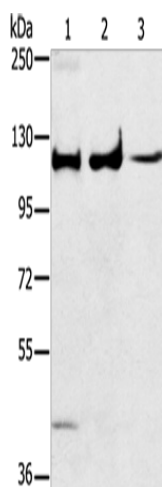
BMK1; ERK4; ERK5; PRKM7

Protein Families:

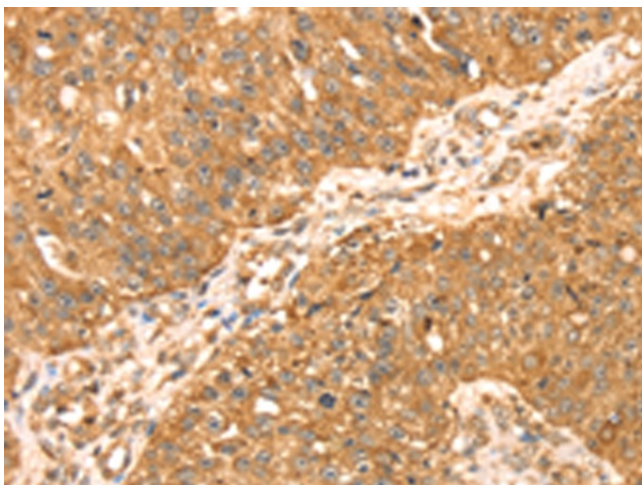
Druggable Genome, Protein Kinase

Protein Pathways:

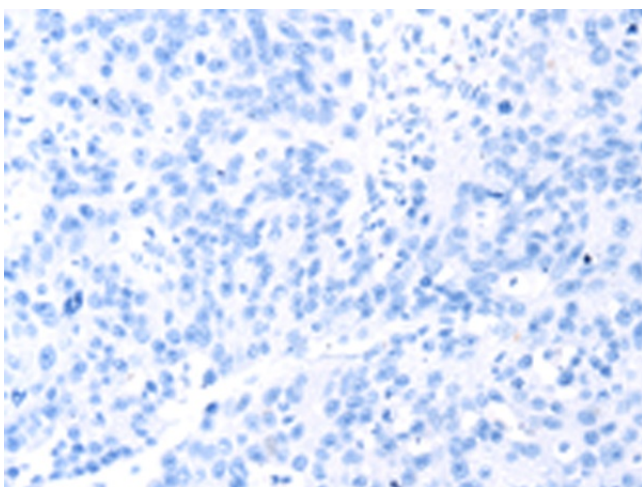
Gap junction, GnRH signaling pathway, MAPK signaling pathway, Neurotrophin signaling pathway

Product images:

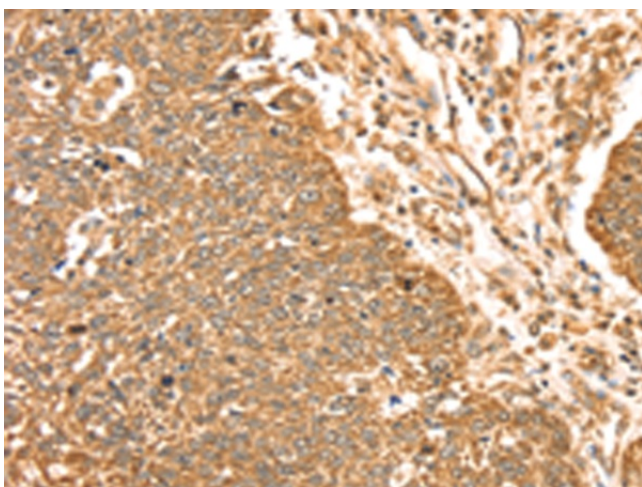
Gel: 6%SDS-PAGE
Lysate: 40 µg
Lane 1-3: Human fetal muscle tissue
A172 cells
K562 cells
Primary antibody: TA349307 (MAPK7 Antibody) at dilution 1/250
Secondary antibody: Goat anti rabbit IgG at 1/8000 dilution
Exposure time: 20 seconds



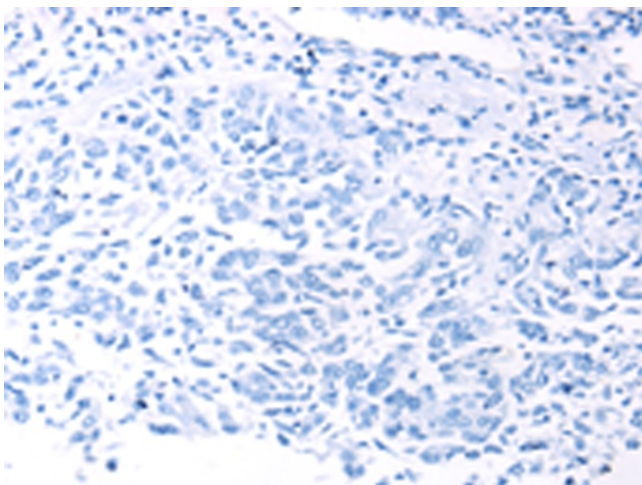
Immunohistochemistry of paraffin-embedded Human breast cancer tissue using TA349307 (MAPK7 Antibody) at dilution 1/35 (Original magnification: ×200)



Immunohistochemistry of paraffin-embedded Human breast cancer tissue using TA349307 (MAPK7 Antibody) at dilution 1/35, treated with fusion protein. (Original magnification: $\times 200$)



Immunohistochemistry of paraffin-embedded Human lung cancer tissue using TA349307 (MAPK7 Antibody) at dilution 1/35 (Original magnification: $\times 200$)



Immunohistochemistry of paraffin-embedded Human lung cancer tissue using TA349307 (MAPK7 Antibody) at dilution 1/35, treated with fusion protein. (Original magnification: $\times 200$)