

## Product datasheet for **TA349306S**

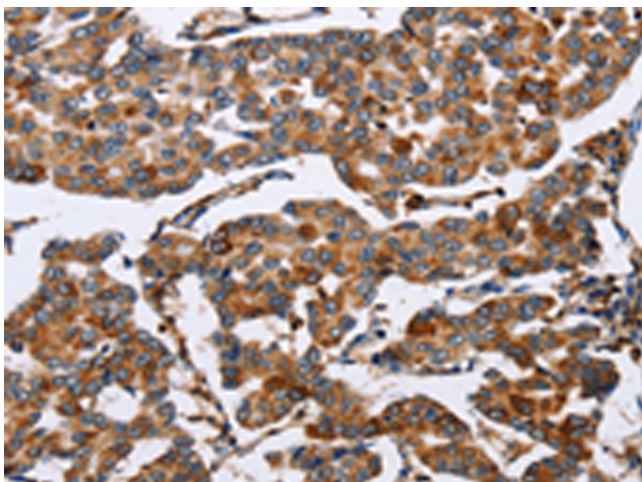
### ENPP5 Rabbit Polyclonal Antibody

#### Product data:

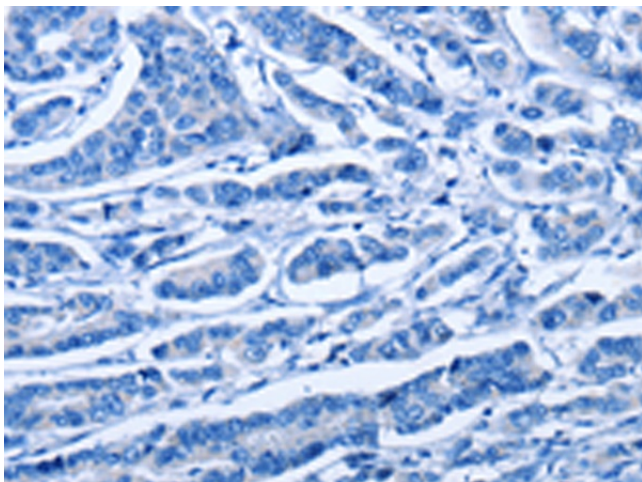
Product Type:	Primary Antibodies
Applications:	IHC
Recommended Dilution:	IHC: 100-300 Positive control: Human breast cancer Predicted cell location: Cytoplasm
Reactivity:	Human, Mouse, Rat
Host:	Rabbit
Isotype:	IgG
Clonality:	Polyclonal
Immunogen:	Fusion protein of human ENPP5
Formulation:	pH7.4 PBS, 0.05% NaN <sub>3</sub> , 40% Glycerol
Purification:	Antigen affinity purification
Conjugation:	Unconjugated
Storage:	Store at -20°C as received.
Stability:	Stable for 12 months from date of receipt.
Gene Name:	ectonucleotide pyrophosphatase/phosphodiesterase 5 (putative)
Database Link:	<a href="#">NP_067547</a> <a href="#">Entrez Gene 59084 Human</a> <a href="#">Q9UJA9</a>
Background:	ENPP5 is a single-pass membrane protein that belongs to the nucleotide pyrophosphatase/phosphodiesterase family. It may play a role in neuronal cell communication, and it lacks nucleotide pyrophosphatase and lysopholipase D activity.
Synonyms:	NPP-5
Protein Families:	Secreted Protein, Transmembrane

[View online »](#)

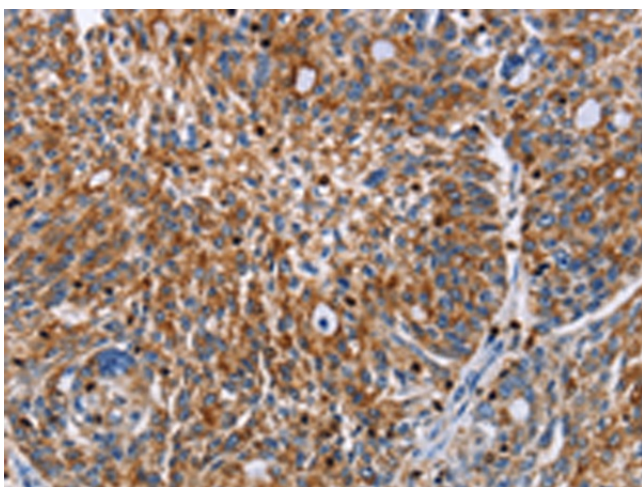
## Product images:



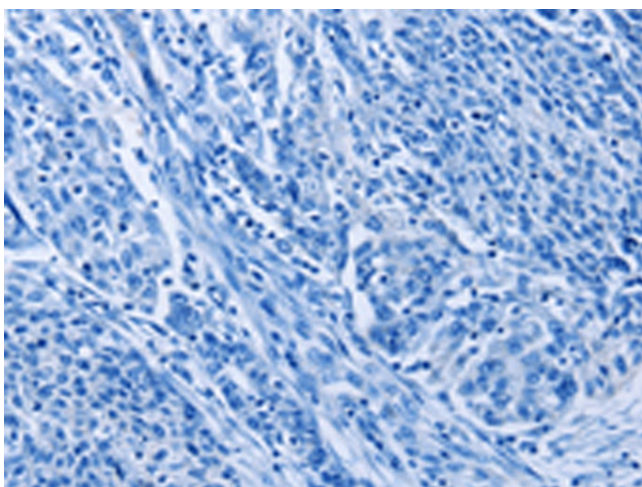
Immunohistochemistry of paraffin-embedded Human breast cancer tissue using [TA349306] (ENPP5 Antibody) at dilution 1/60 (Original magnification: ×200)



Immunohistochemistry of paraffin-embedded Human breast cancer tissue using [TA349306] (ENPP5 Antibody) at dilution 1/60, treated with fusion protein. (Original magnification: ×200)



Immunohistochemistry of paraffin-embedded Human ovarian cancer tissue using [TA349306] (ENPP5 Antibody) at dilution 1/60 (Original magnification:  $\times 200$ )



Immunohistochemistry of paraffin-embedded Human ovarian cancer tissue using [TA349306] (ENPP5 Antibody) at dilution 1/60, treated with fusion protein. (Original magnification:  $\times 200$ )